

Bay Area UASI

Regional Care and Shelter Capability Building

Project Close Out

Approval Authority Meeting

Agenda Item 8

March 14, 2019





Project Overview

Goal:

Build local government capabilities to perform care and sheltering functions, including serving Access and Functional Needs populations, medical needs populations, and coordinated pet sheltering, throughout the Bay Area

Participants:

Local jurisdictions: social services, emergency management, public health, animal care and control

NGOs: American Red Cross, The Salvation Army, SPCA, and others

State Partners: Cal OES, CDSS, CA DGS,



Outcomes:

Comprehensive Care and Shelter Planning Toolkit

Network of care and shelter planners / partners

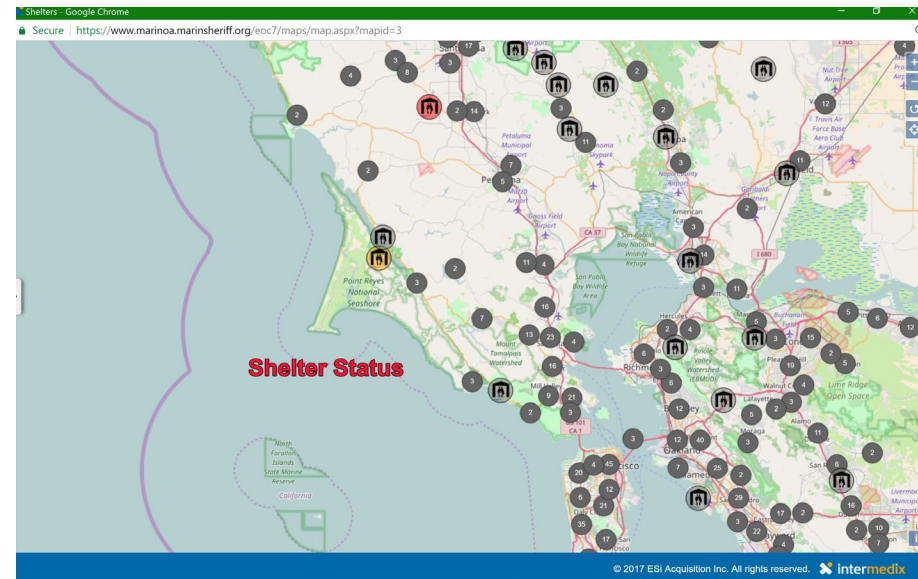
Online forums to share resources



Project Year One (2017)

Products/Accomplishments

- Local plan evaluations
- Planning guidance
- WebEOC Shelter Board
- MOU Status Report
- Regional Strategy Report
- Piloted ARC EDGE online training system
- Yellow Command Tabletop Exercise Series

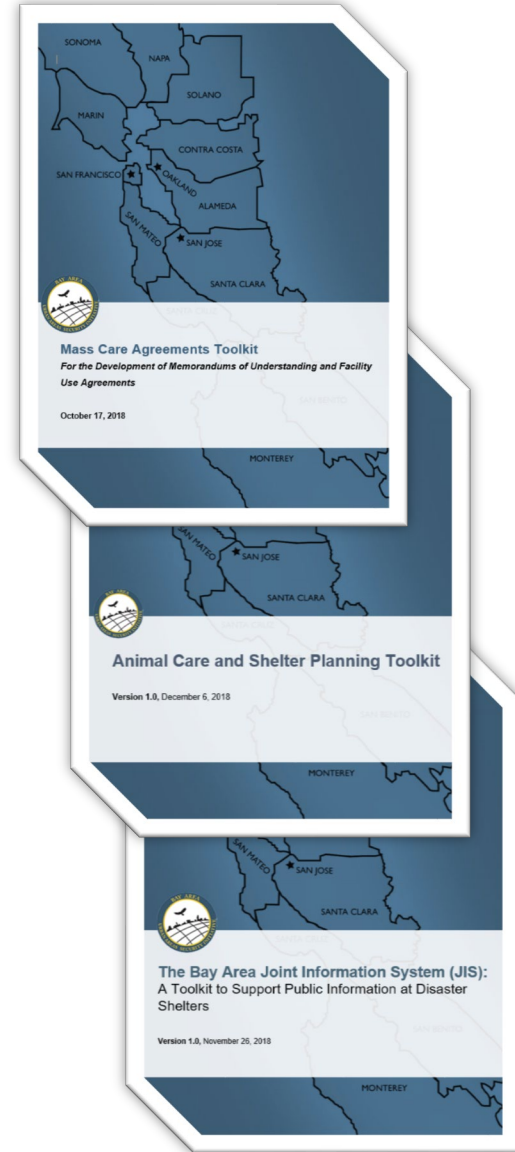




Project Year Two (2018)

Products/Accomplishments

- Mass Care Agreements Toolkit
- Animal Care and Shelter Planning Guidance
- Local animal care plan evaluations
- Disaster Shelter Public Information Toolkit
- Updated Gap Identification Tool and Shelter Calculator
- Essential Elements of Information in a Shelter Status Form
- Yellow Command Full-scale Exercise
- Final Regional Strategy Report





Workshops and Trainings

Workshops and Trainings

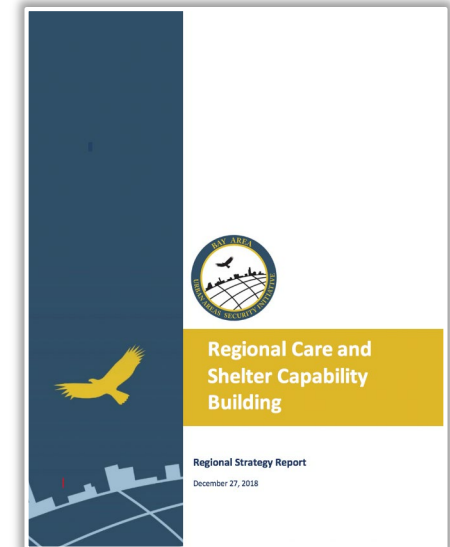
- ***Roles and Responsibilities (5/31/17)***
- ***Best Practices for Integrating Access and Functional Needs (8/23/17)***
- ***Addressing Medical and Animal Care Needs in a Shelter (11/1/17)***
- ***Understanding Concepts and Identifying Resources (6/7/18)***
- ***Understanding Systems and Organizing Resources (7/23/18)***
- ***Integrated Medical Services in Local Shelters (8/22/18)***
- ***Developing/Updating MOUs and Facility Agreements (10/10/18)***
- ***Animal Care and Shelter Planning (11/1/18)***





Notable Recommendations

- Update or establish MOUs and agreements
- Establish pre-disaster contracts (e.g. feeding, security)
- Complete / update site assessments incorporating AFN accommodations
- Complete the Gap ID Tool for catastrophic earthquake to inform state partners of anticipated gaps
- Update local plans!
 - Address AFN accommodations
 - Prioritize inventory of potential sites
 - Procedures for tracking resources
 - Processes for supporting medical needs
 - Processes for animal care and shelter





Bay Area Care and Shelter Website

For access to all of the tools and resources developed over the past two years, visit www.bayareauasi.org/careshelter



Care & Shelter Planning Toolkit

The [Care and Shelter Planning Toolkit](#) is being developed with guidance by the UASI Care and Shelter Subcommittee to the Emergency Management Work Group. Included in the toolkit are workshop summaries, shelter planning guidance, a resource gap identification tool, best practices, and other resources.

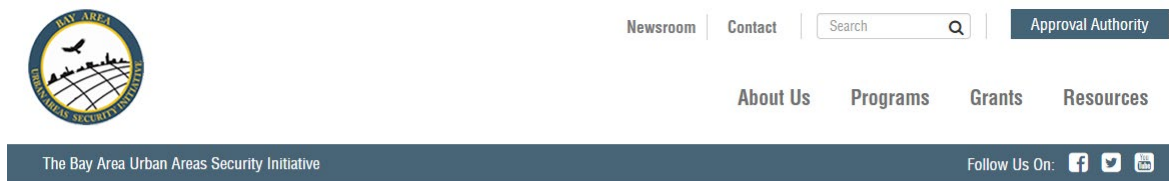
ABOUT US	PROGRAMS	GRANTS	BAY AREA URBAN AREAS SECURITY INITIATIVE (UASI)	RESOURCES	CALENDAR	CONTACT
Approval Authority Members Management Team Members	Catastrophic Planning CBRNE Community Resiliency & Recovery Cybersecurity Emergency Medical & Public Health Preparedness Information Sharing Interoperable Communications	Overview Apply for a Grant Manage Grants Technical Support		Resources - Search Documents	Events & Meetings	The Bay Area UASI 711 Van Ness Avenue, Suite 420 San Francisco, CA 94102 t: 415-353-5223



Technical Assistance

To request a consultation or workshop support, submit a request via

<http://www.bayareauasi.org/taprogram>



Bay Area UASI Technical Assistance Program



Thank you!

Corinne Bartshire, AICP, CFM

Regional Project Manager

Bay Area UASI

711 Van Ness Avenue #420

San Francisco, CA 94102

Corinne.Bartshire@sfgov.org

415-353-5234 (desk)

415-861-9005 (cell)



Bay Area UASI