



PROTECTING THE PUBLIC  
SERVING OUR NATION

www.atf.gov

**Patrick T. Gorman**

Special Agent in Charge

[patrick.t.gorman@usdoj.gov](mailto:patrick.t.gorman@usdoj.gov)

Alcohol, Tobacco, and Firearms  
San Francisco Field Division

Bay Area Urban Areas Security Initiative (UASI)  
Threat Briefing - Crime Gun Related Intelligence

June 9, 2022

Approval Authority Item 8a



**U.S. Department of Justice**

Bureau of Alcohol, Tobacco, Firearms and Explosives



PROTECTING THE PUBLIC  
SERVING OUR NATION

www.atf.gov

# Firearms Tracing

- ATF's National Tracing Center is the United States' only crime gun tracing facility.
- ATF's National Tracing Center is authorized to trace firearms by the Gun Control Act of 1968.
- ATF's National Tracing Center is only authorized to trace a firearm for a law enforcement agency involved in a bona fide criminal investigation.



U.S. Department of Justice

Bureau of Alcohol, Tobacco, Firearms and Explosives

## EVERY GUN TELLS A STORY

Don't let a crime gun's story involve you

**The Purchaser**  
Bought the gun for a roommate who failed the background check.

**The Roommate**  
Sold the gun to her friend to pay rent.

**The Friend**  
Sold the gun to a bad guy to support his drug habit.

**The Bad Guy**  
Uses the gun to commit a homicide.

Too often this is a reoccurring story.

**Break the cycle - straw purchasing is illegal.**

Published by ATF - June 2018

www.ATF.gov



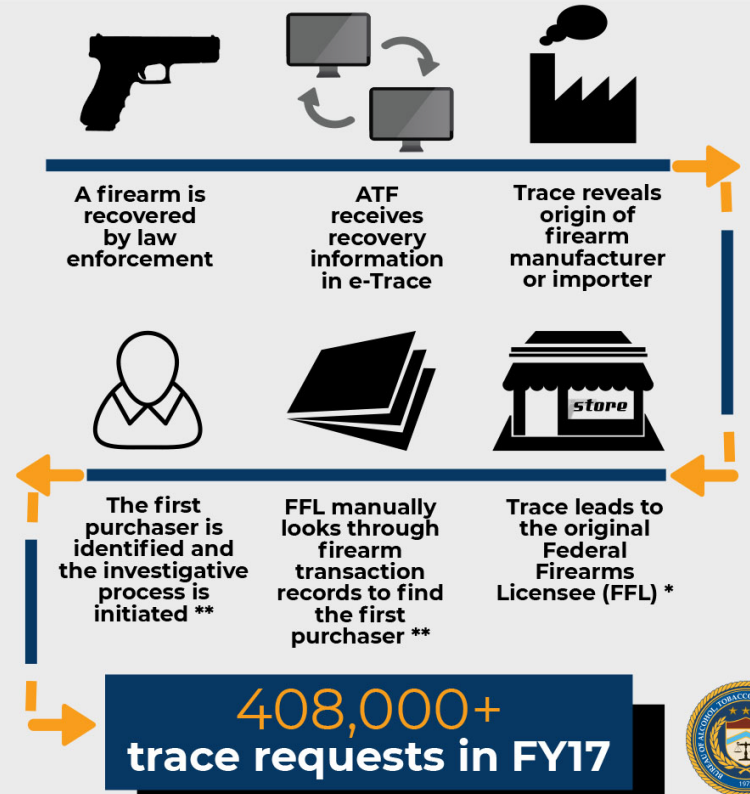
PROTECTING THE PUBLIC  
SERVING OUR NATION

# eTrace

www.atf.gov

- eTrace helps identify gun traffickers, potential suspects and patterns of violent gun crime to help law enforcement agencies solve criminal cases.
- eTrace helps criminal investigators quickly trace down the origin and purchaser of crime guns to support criminal prosecutions.
- Local, state and federal law enforcement agencies use eTrace to input and access firearms trace data.

## HOW ATF TRACES FIREARMS



www.ATF.gov

\* Not all traces may lead to original FFL; sales sometimes lead beyond that to a subsequent FFL.  
\*\* First purchaser is not always identified, sometimes traces lead to a more recent purchaser or an unlicensed purchaser.

Published by ATF - August 2018



U.S. Department of Justice

Bureau of Alcohol, Tobacco, Firearms and Explosives



PROTECTING THE PUBLIC  
SERVING OUR NATION

# NIBIN

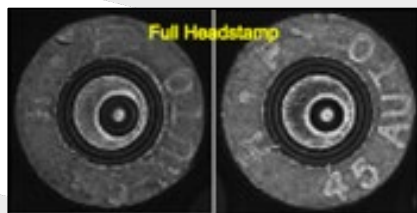
[www.atf.gov](http://www.atf.gov)

Breech face marks are left on the head of the cartridge case as the gun is fired

The firing pin leaves an impression on the cartridge case

The extractor leaves marks on the cartridge case as the projectile is fired

The ejector leaves marks on the cartridge case as the case is ejected



- NIBIN is a critical tool used to share ballistic information that is a crucial to reducing firearms-related violent crime.

The National Integrated Ballistic Information Network (NIBIN) is the only national network that allows for the capture and comparison of ballistic evidence to aid in solving and preventing violent crimes involving firearms.

- NIBIN and eTrace are two key tools that ATF's Crime Gun Intelligence Centers (CGIC) use to identify violent shooters and their sources of crime guns.



**U.S. Department of Justice**

Bureau of Alcohol, Tobacco, Firearms and Explosives

# Crime Gun Intelligence (CGI)

- ATF's Crime Gun Intelligence Centers serve as intelligence hubs and coordination centers for local, state and federal responses to mass shootings and other major crimes involving firearms.
- CGICs use cutting-edge forensic science and crime gun evidence to support the investigation and prosecution of violent criminals.
- CGICs are an interagency collaboration between ATF, law enforcement agencies, forensics labs, academic institutions and prosecutors committed to stopping gun crimes.



**U.S. Department of Justice**

Bureau of Alcohol, Tobacco, Firearms and Explosives



PROTECTING THE PUBLIC  
SERVING OUR NATION

[www.atf.gov](http://www.atf.gov)

# Questions?



**U.S. Department of Justice**

Bureau of Alcohol, Tobacco, Firearms and Explosives