

BAY AREA UASI

FY 2015-2016
Bay Area UASI

Capability and Asset Risk
Update

July 9, 2015





Background

- DHS and UASI Approval Authority Bylaws require a risk and capability-based methodology to apply for and allocate grant funds
- Since July 2009 the Bay Area UASI has conducted a cross-jurisdictional, cross-functional risk management program to:
 - Set priorities
 - Develop/compare courses of action
 - Inform decision-making
- An on-going effort with continuous data input, validation, regularly scheduled assessments, and annual reporting





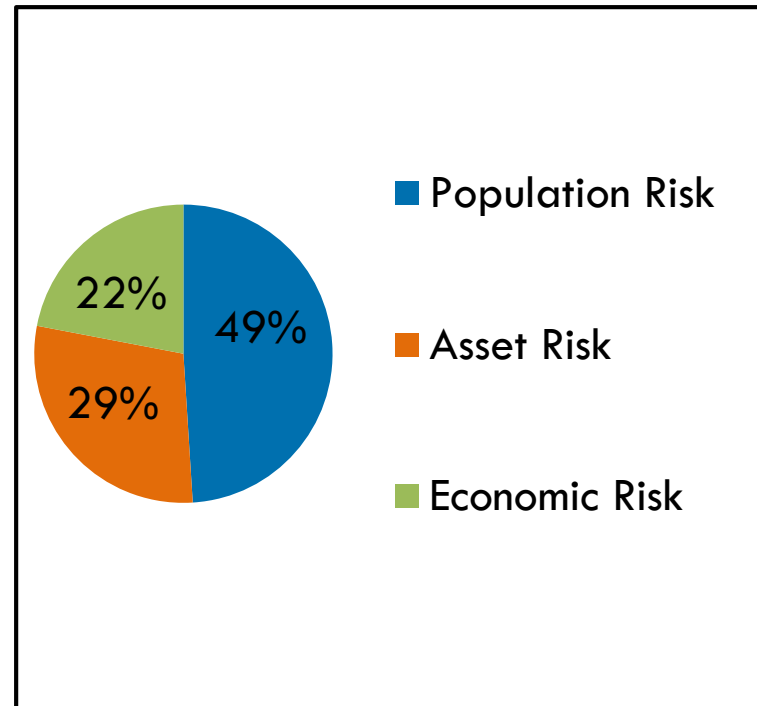
Cal COP - Risk Analysis Center

- California Common Operating Picture (Cal COP) for Threat Awareness
 - Formerly Digital Sandbox 7 (DS7)
 - Used by all eight California UASIs
- Supports a State/local approach to risk management
- Assists state and local risk management communities:
 - understand and identify risk
 - based on threats, vulnerabilities and consequences
 - risk prioritization methodology to align resources to needs
- Supports a common view of risk
 - Complies with national guidelines, agency standards and regulations



Asset Risk: Only one part of the formula

- As adopted by the Bay Area UASI Approval Authority
- Percentage distribution may change depending upon DHS guidance
- Each year the Management Team presents the risk formula to the Approval Authority for approval pending release of DHS grant guidance



Asset Update and Risk Validation - Process

- Users created, updated and validated asset data in Cal COP (March– April)
 - This phase included adding/updating asset details, priority levels, vulnerability and consequence scores (VHEMP), and field assessments (where appropriate) in the Cal COP
 - Added 80 new users (currently 283 Bay Area users); 75 Protected Critical Infrastructure Information (PCII) users
- The NCRIC conducted a review of the updated asset information and validated data items that effect risk (June)

The NCRIC submits the updated asset information to the DHS PCII office for certification.





Asset Update and Risk Validation - Process

- Each year the NCRIC suggests sectors to focus on to improve the data quality of the asset catalogue
- Education Sub-Sector Assets
 - Each Operational Area was provided a list of school assets and asked to review priority levels to standardize across the Bay Area based on the following criteria:
 - Priority I = Universities with large medical research and laboratory facilities
 - Priority II = Schools with population 1,000+
 - Priority III = Schools with population under 1,000





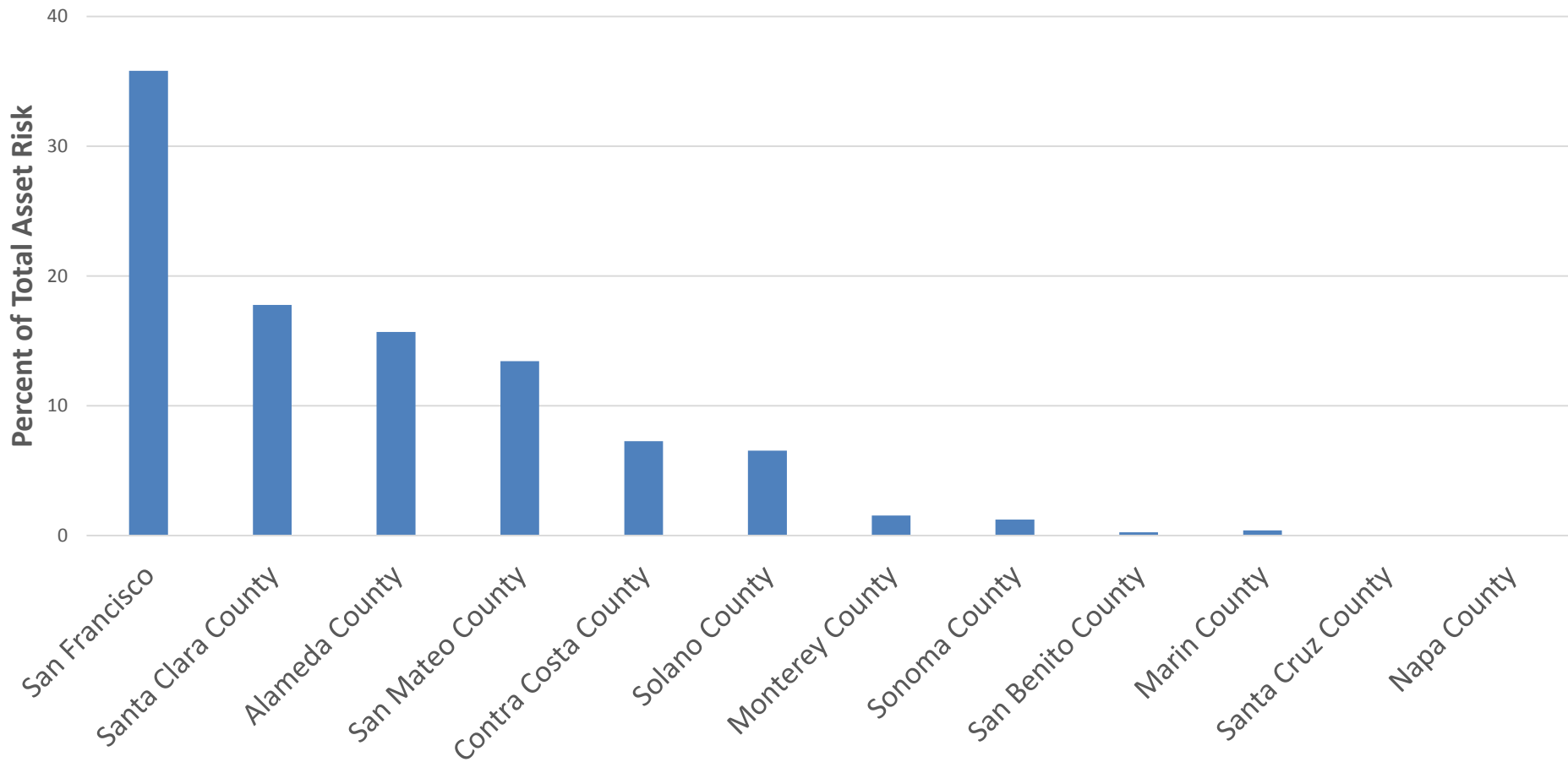
Asset Update and Risk Validation - Outcomes

- The Bay Area asset catalog increased 5% from 16,017 to 16,445
- 3 Asset Priority Assessments
- 11 VHEMP Assessments completed
- 16 Field Assessments completed
- Standardized school asset priorities except Oakland, Alameda, Napa, and Santa Cruz



2015 County Asset Risk

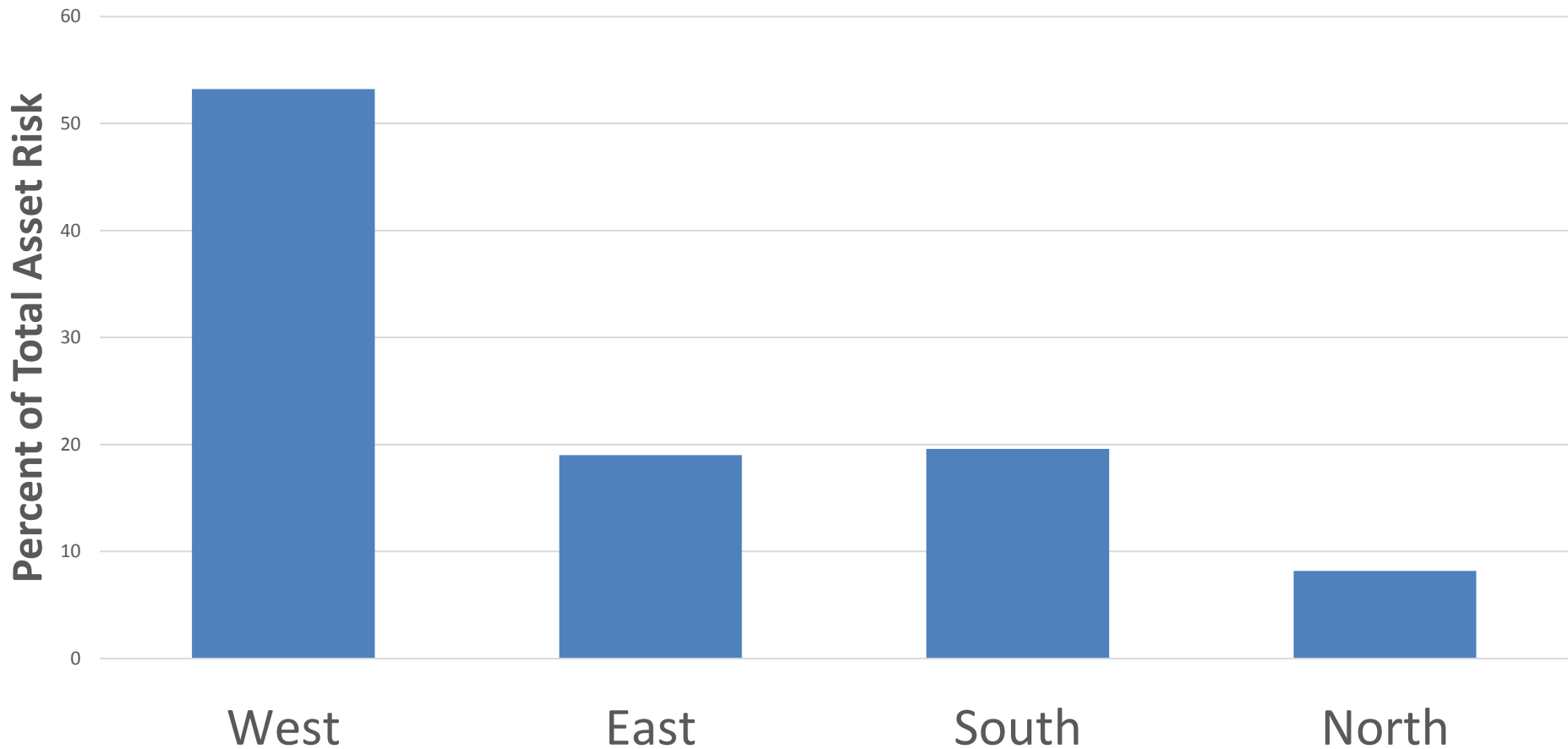
County Asset Risk





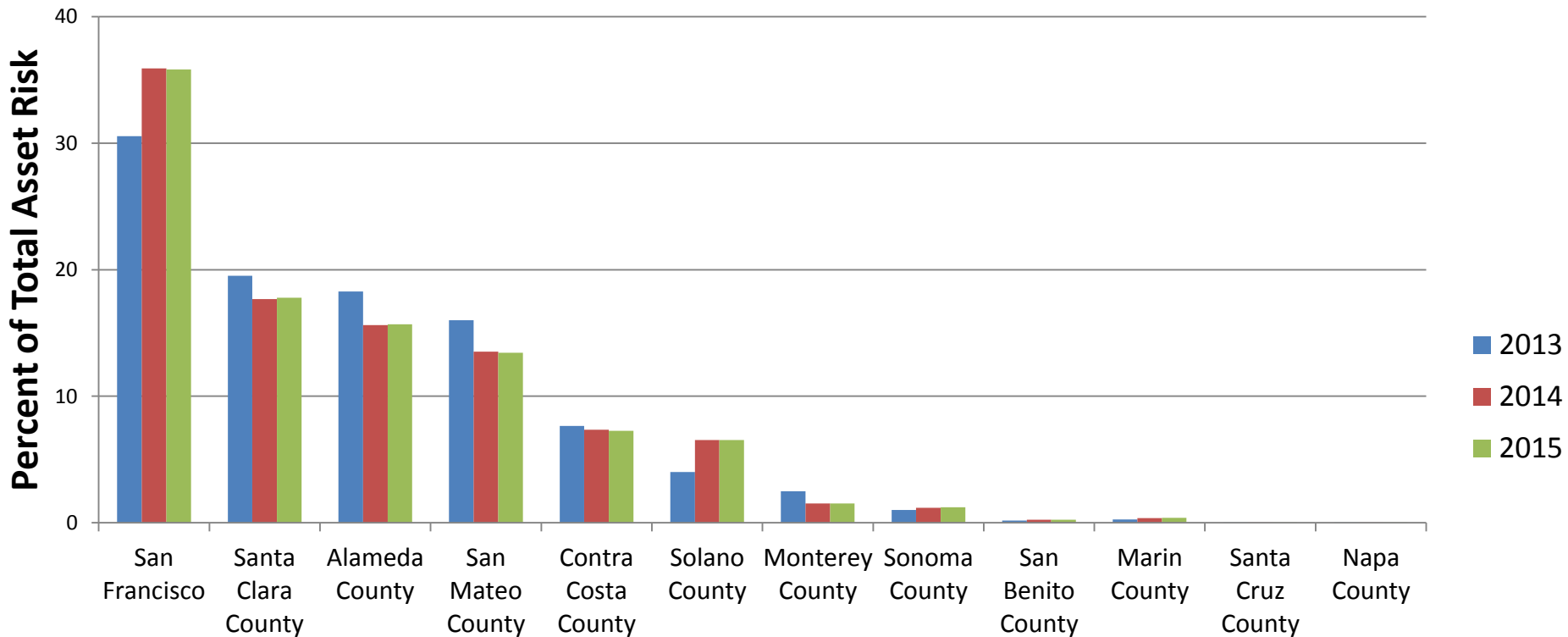
2015 Hub Asset Risk

Hub Asset Risk



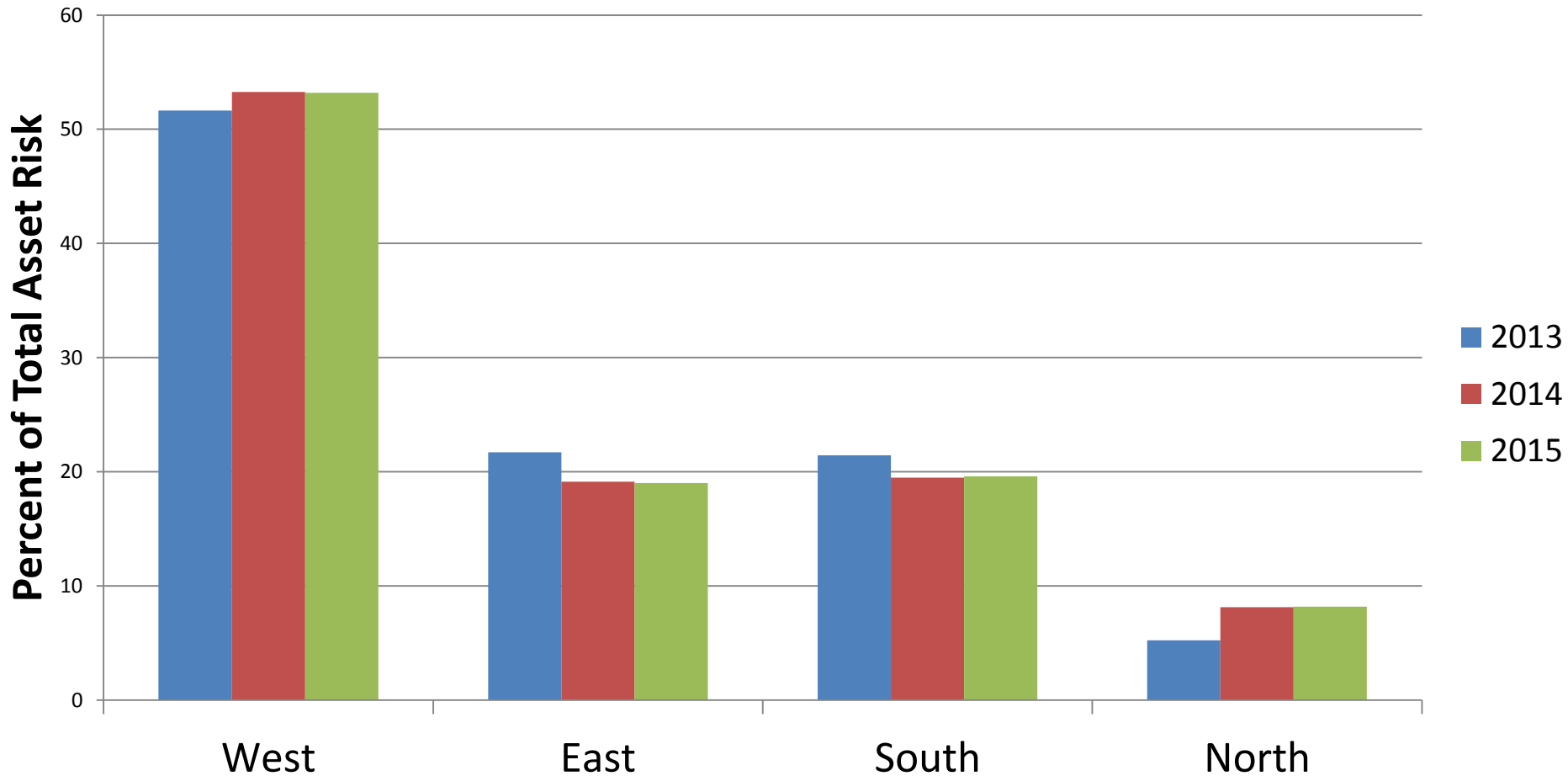
Historical County Asset Risk Comparison

County Asset Risk



Historical Hub Asset Risk Comparison

Hub Asset Risk





Capability Assessment – Op Area & Regional

- 9 Op Areas and 3 Core Cities completed Capability Assessments
- The Regional Capability Assessment of the common core capabilities was conducted in a workshop format using subject matter experts from across Bay Area jurisdictions and multiple disciplinary groups. (May 20th)
- UASI Project Managers conducted Regional Capabilities Assessments using existing SME workgroups; CBRNE, InterOP, Cyber, PI&W, Medical Health, Training and Exercise.
- The results were entered into the Cal COP Assessment Tool to provide a Gap Analysis.



Thank you.

BAY AREA UASI

