

Urban Shield 2012
October 26-29th 2012
UASI Approval Authority Presentation
August 9th, 2012



URBANSHIELD[®]

ALAMEDA COUNTY SHERIFF'S OFFICE

TRAIN WITH PURPOSE • SERVE WITH HONOR



Urban Shield 2012



- Urban Shield has been funded through the Bay Area Urban Area Security Initiative (UASI) since 2007.
- The exercise has evolved into a multi-disciplinary, full-scale disaster preparedness exercise (FSE) which is being duplicated around the nation. Urban Shield encompasses Law, Fire, EMS, and Public Health.
- Thousands of first responders and emergency managers have received invaluable real-world, hands-on training through this one-of-a-kind exercise (over 3600 people were involved in the planning/preparation phases of Urban Shield 2011).
- UASI regions throughout the nation have attended and evaluated the event (Denver, Austin-Rock, Portland, Kansas City, Cook County Illinois, Anaheim-Santa Ana Regions).
- Urban Shield is the best emergency preparedness FSE in the nation and would not happen without the continued support and funding of the Bay Area UASI.
- Thank you for your continued support of this invaluable training exercise.

Urban Shield 2012

- Urban Shield is a 48-hour FSE involving regional fire departments, emergency medical services and local, state, national, federal and international law enforcement teams funded through the Bay Area Urban Area Security Initiative (UASI)
- First responders are presented with exercise scenarios that incorporate key elements of real-world emergencies and major critical incidents at various scenario sites in Alameda, San Francisco, San Mateo, Santa Clara, Contra Costa and Marin counties.
- An Incident Command System (ICS) structure—with seven Area Commands, Medical Checkpoints, and a Department Operations Center (DOC)—will be implemented to manage the multi-location and multi-discipline full-scale exercise.



Bay Area Homeland Security 2010 – 2013 Risk Overview Assessment



- Law Enforcement, Fire, EMS and Public Health personnel representing agencies throughout the Bay Area UASI will participate in 39 realistic scenarios (27 Tactical, 11 Fire, 1 EOD)
- Their capabilities and equipment are evaluated in order to provide an accurate Regional assessment that results in a meaningful Gap Analysis, After Action Report (AAR), Improvement Plans and Training and Exercise Plans.
- Management of resources - To develop and maintain the tracking of Regional assets to verify their location, level of readiness and capability to improve Regional preparedness.

Bay Area Homeland Security 2010 – 2013 Integrated Critical Infrastructure



- Urban Shield provides a multi-layered training exercise to enhance the skills and abilities of regional first responders, as well as those responsible for coordinating and managing large scale events.
- The exercise is designed to identify and stretch regional resources to their limits while expanding regional collaboration and building positive relationships.
- This exercise enhances public/private partnerships and critical infrastructure collaboration.

Urban Shield Overarching Goals 2012



- Test new regional interoperable communication capabilities (East Bay Regional Communications System Authority EBRCSA).
- Evaluate the integration of mass transportation and other critical infrastructure, along with their onsite personnel into a cooperative, unified command response.
- Evaluate the UASI Training and Exercise Program's effectiveness.
- Test CBRNE detection, response, and decontamination by evaluating USAR/HazMat/EOD core competencies.
- Create awareness to new technologies which will help first responders to do their jobs safer and more efficiently.
- Evaluate medical , public health, and mass care preparedness core competencies.
- Control the exercise management activities utilizing the ICS structure consistent with NIMS and SEMS.

Bay Area Homeland Security 2010 – 2013

Integrated Critical Infrastructure



- Urban Shield operates under the principals of the National Incident Management System (NIMS), Standardized Emergency Management System (SEMS) and the Incident Command System (ICS) structure.
- Regional emergency management personnel control the exercise utilizing the Emergency Operation Centers in San Francisco, San Mateo, and Alameda Counties, as well as the Lawrence Berkeley National Laboratory functioning as the Area Commands and Department Operations Center (DOC).

Black Area Command

Alameda County Sheriff's Office



- Live Fire House, Firearms Training Center in Dublin, ACSO
- Explosive Ordnance Detection, EOD Bomb Range in Dublin, ACSO
- K-9/Skidds, Rural Operation and Fugitive Apprehension of Sovereign Citizens, unincorporated Livermore, ACSO
- Active Shooter, Las Positas College in Livermore, Livermore Police Department

Silver Area Command

San Mateo County Sheriff's Office



- WMD terrorist attack at water treatment/storage facility at the Foster City Corporation Yard in Foster City, Foster City Police Department
- Attack on a Subway Train at the Millbrae BART Station in Millbrae, BART Police Department
- Domestic Terrorist with Hostage and Threats to use an RPG on Bridge/Dam at the Watershed Quarry on Highway 92 and Highway 35 (Crystal Springs Reservoir), San Mateo County Sheriff's Office
- Suicide Bomber with New Explosive Simulators using compressed air at the Port of Redwood City, Redwood City Police Department
- UC Cover/High risk search warrant hosted San Francisco, DEA

Green Area Command

San Francisco Police Department



- Community Justice Center Takeover, San Bruno Jail, San Bruno, San Francisco Sheriff's Department
- Active Shooter, San Bruno Jail, San Bruno, San Francisco Sheriff's Department
- High Rise Building, Transamerica Pyramid Building, San Francisco, San Francisco Police Department
- Human Trafficking/Officer Rescue, Angel Island, Tiburon, Execushield

Purple Area Command

Lawrence Berkeley National Laboratory



- Mass Casualty Scenario, Children's Hospital Training Center, Walnut Creek, ACSO
- Novartis/Alpha Act, Emeryville, Oakland Housing Authority Police Department
- Richmond Field Station, UC Berkeley Campus, Santa Rosa Police Department

Blue Area Command

Alameda County Sheriff's Office



- Hostage Rescue, Amtrak, Oakland, Co-hosted by Amtrak and ACSO
- Chemical Sabotage, Cull Canyon Park, Castro Valley, Co-hosted by East Bay Regional Parks Police Department and ACSO
- Vehicle Assault with EOD Element, Old Mervyn's Building, Hayward, Hayward PD
- Active Shooter, Cal-State East Bay, Hayward hosted by CSUEB, EMS, FBI and ACSO
- Active Shooter, Canyon Middle School, Castro Valley, ACSO
- Team Building/Technical Rappel, CSUEB, Hayward, Co-hosted by CSUEB, EMS, FBI and ACSO

Gold Area Command

ACSO and Palo-Alto Police Department



- Maritime Interdiction, US Department of Maritime Administration, Pier 2 Alameda, ACSO
- Aircraft Interdiction, Oakland Airport, Port of Oakland, ACSO
- Lone Wolfe/Assault on School, Coyote Hills, Fremont, Fremont Police Department
- TBD, Naval Operations Support Center, Alameda, Alameda Police Department
- TBD, Bay Bridge, Oakland, Co-hosted by Cal-Trans and Modesto Police Department

Red Area Command

South San Francisco Fire Department



- Trench Emergency, Trench Emergency Scenario Site, South San Francisco, South San Francisco Fire Department
- Confined Space Emergency, South San Francisco Corporation Yard, South San Francisco Fire Department
- High Angle Rescue, Centennial Towers, South San Francisco, South San Francisco Fire Department
- Low Angle Rescue, Low Angle Scenario Site, South San Francisco, South San Francisco Fire Department
- Entrapment, Shaman Pharmaceutical, South San Francisco, South San Francisco Fire Department
- Arson Fire, Spruce Business Park, South San Francisco, South San Francisco Fire Department
- Rail Car Emergency, Rail Car Scenario Site, South San Francisco, South San Francisco Fire Department
- Odor Investigation, Spruce Business Park, South San Francisco, South San Francisco Fire Department
- Explosion, Facility/Location TBA, South San Francisco Fire Department
- Confidence Course, South San Francisco Corporation Yard, South San Francisco, South San Francisco Fire Department
- Cooperative Building Collapse, Shaman Pharmaceutical, South San Francisco, South San Francisco Fire Department

Supporting Agencies

Regional Organizations



- ▶ Alameda County
- ▶ Alameda County Deputy Sheriffs' Association (DSA)
- ▶ Alameda County District Attorney's Office
- ▶ Alameda County Emergency Medical Services
- ▶ Alameda County Fire Department
- ▶ Alameda County General Services Agency
- ▶ Alameda County Health Care Services Agency
- ▶ Alameda County Sheriff's Office
- ▶ Alameda County Sheriff's Office Air Squadron
- ▶ Alameda County Sheriff's Office Communications
- ▶ Alameda County Sheriff's Office Dive Team
- ▶ Alameda County Sheriff's Office SAR Unit
- ▶ Alameda Reuse and Redevelopment Authority
- ▶ Alameda-Contra Costa Transit District
- ▶ Albany Fire Department
- ▶ BART Police Department
- ▶ Berkeley Police Department
- ▶ Cal State Police Department – East Bay
- ▶ Chicago Police Department
- ▶ City and County of San Francisco
- ▶ Contra Costa County Sheriff's Office
- ▶ Daly City Police Department
- ▶ East Bay Regional Parks Police Department
- ▶ El Dorado County Sheriff's Office
- ▶ Emeryville Police Department
- ▶ Foster City Police Department
- ▶ Fremont Fire Department
- ▶ Fremont Police Department
- ▶ Hayward Police Department
- ▶ Livermore-Pleasanton Fire Department
- ▶ Livermore Police Department
- ▶ Lodi Police Department
- ▶ Marin County JPA Hazmat Team
- ▶ Marin County Urban Search and Rescue Team
- ▶ Monterey County Fire Department
- ▶ Mountain View Fire Department
- ▶ Napa County Fire Department
- ▶ Newark Police Department
- ▶ Novato Police Department
- ▶ Oakland Fire Department

Supporting Agencies

Regional Organizations



- ▶ Oakland Police Department
- ▶ Palo Alto Fire Department
- ▶ Palo Alto Police Department
- ▶ Pleasanton Police Department
- ▶ Redwood City Police Department
- ▶ Richmond Fire Department
- ▶ Richmond Police Department
- ▶ Sacramento Metro Fire Department
- ▶ Sacramento Police Department
- ▶ San Francisco County Sheriff's Department
- ▶ San Francisco Fire Department
- ▶ San Francisco Police Department
- ▶ San Joaquin County Sheriff's Office
- ▶ San Jose Fire Department
- ▶ San Jose Police Department
- ▶ San Leandro Police Department
- ▶ San Mateo County
- ▶ San Mateo County Sheriff's Office
- ▶ San Rafael Police Department
- ▶ Santa Clara City Fire Department
- ▶ Santa Clara County Fire Department
- ▶ Santa Cruz County Sheriff's Office
- ▶ Sonoma County Sheriff's Office
- ▶ South San Francisco Fire Department
- ▶ Stanislaus County Sheriff's Office
- ▶ Sunnyvale Department of Public Safety
- ▶ Twin Cities Police Department
- ▶ Union City Police Department
- ▶ University of California – Berkeley Police Dept.
- ▶ Walnut Creek Police Department

Supporting Agencies

State Agencies/Organizations



- ▶ Cal-Explorer Search and Rescue
- ▶ California Army National Guard
- ▶ California State University – East Bay
- ▶ California Department of Corrections & Rehabilitation
- ▶ California Department of Transportation (Caltrans)
- ▶ California Emergency Management Agency (Cal-EMA)
- ▶ California Highway Patrol
- ▶ California State Sheriff's Association (CSSA)
- ▶ Commission on Peace Officer Standards and Training (P.O.S.T.)
- ▶ Disaster Medical Assistance Team (DMAT)
- ▶ Massachusetts State Police
- ▶ NORCAL Ambulance
- ▶ Pacific Gas and Electric Company
- ▶ University of California – Berkeley
- ▶ Bay Area Urban Area Security Initiative (UASI)

Supporting Agencies

Federal Agencies/Organizations



- ▶ Amtrak
- ▶ Amtrak Police Department
- ▶ Bureau of Alcohol, Tobacco, Firearms, and Explosives (AFT)
- ▶ Drug Enforcement Agency – San Francisco (DEA)
- ▶ Federal Bureau of Investigations – San Francisco (FBI)
- ▶ Federal Emergency Management Agency (FEMA)
- ▶ Lawrence Berkeley National Laboratory (LLBL)
- ▶ Lawrence Livermore National Laboratory (LLNL)
- ▶ Lawrence Livermore National Laboratory Radiological Assistance Program
- ▶ Transportation Security Administration (TSA)
- ▶ United States Air Force
- ▶ United States Department of Homeland Security (DHS)
- ▶ United States Coast Guard
- ▶ 95th Civil Support Team

Supporting Agencies Public/Private Partners



- ▶ Alameda County Fair Association
- ▶ American Medical Response (AMR)
- ▶ Boy Scouts of America
- ▶ Cobalt
- ▶ Corizon Health Services
- ▶ Denevi Video
- ▶ Dolphin Graphics
- ▶ Children's Hospital and Research Center
- ▶ East Bay Municipal Utility District (EBMUD)
- ▶ Faber Trust Group
- ▶ FedEx
- ▶ Hilton Hotels and Resorts
- ▶ Operational Medicine Institute
- ▶ Port of Oakland
- ▶ QUEST, Quality Emergency & Safety Training

Supporting Agencies International Organizations



- ▶ Consulate General Israel – San Francisco
- ▶ State of Qatar
- ▶ Kingdom of Jordan
- ▶ State of Israel
- ▶ Israeli National Police
- ▶ China Ministry of Public Security
- ▶ Singapore Police Force
- ▶ Country of Brazil

Regional SWAT Participating Teams



- ▶ Alameda County Sheriff's Office
- ▶ Berkeley Police Department
- ▶ California Dept. of Corrections
- ▶ Chicago Police Department
- ▶ Contra Costa County Sheriff's Office
- ▶ East Bay Regional Parks Police Department
- ▶ East County Tactical Livermore-Pleasanton
- ▶ Federal Bureau of Investigation - SF
- ▶ Fremont Police Department
- ▶ Hayward Police Department
- ▶ Marin County Sheriff's Office
- ▶ Newark Police Department
- ▶ Oakland Police Department
- ▶ Palo Alto Police Department
- ▶ Redwood City Police Department
- ▶ Richmond Police Department
- ▶ Sacramento Police Department
- ▶ San Francisco County Sheriff's Dept.
- ▶ San Francisco Police Department
- ▶ San Jose Police Department
- ▶ San Leandro Police Department
- ▶ San Mateo County Sheriff's Office
- ▶ Stanislaus County Sheriff's Office
- ▶ Sunnyvale Department of Public Safety
- ▶ Union City Police Department
- ▶ U.C. Berkeley Police Department

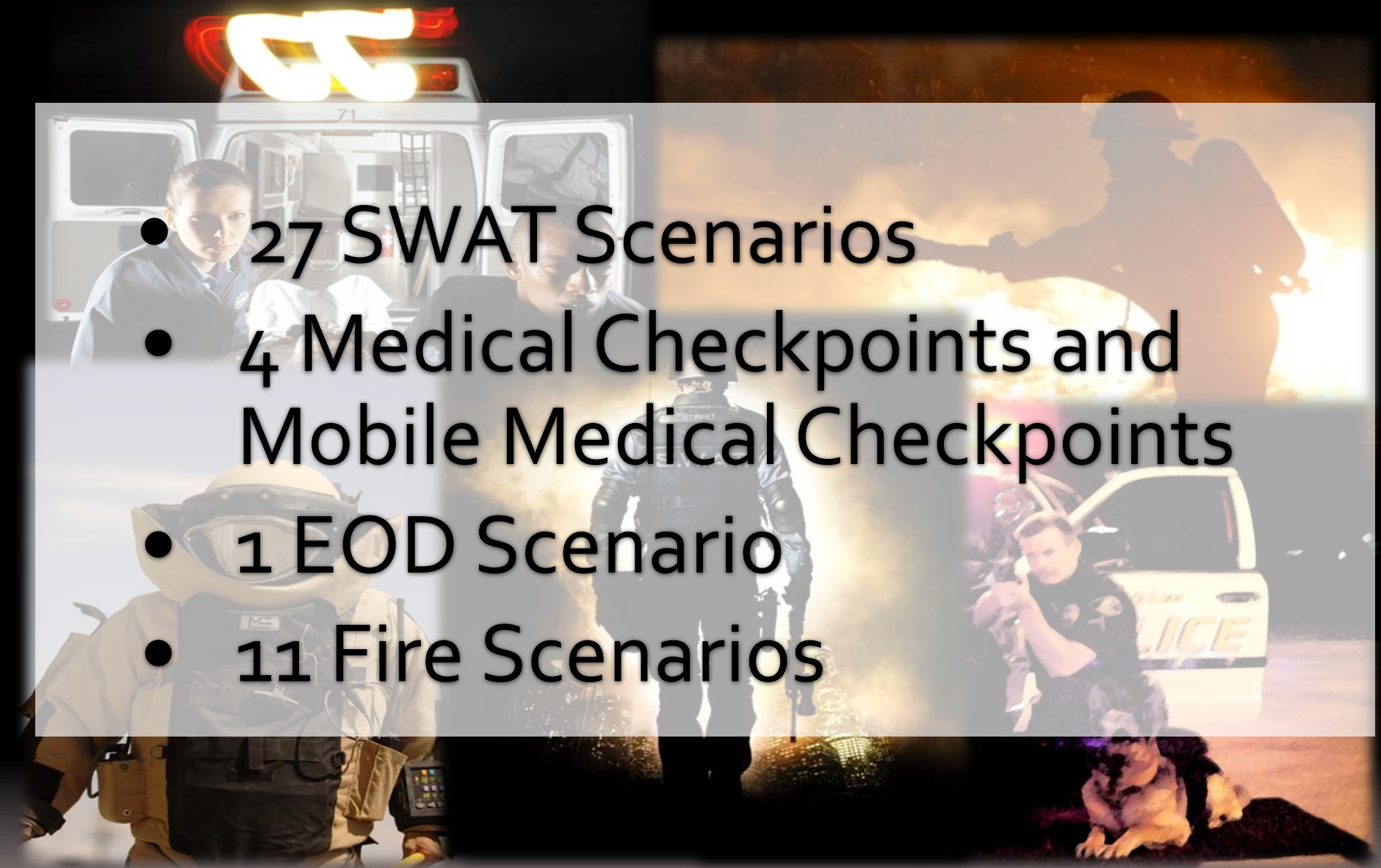
Regional FIRE Participating Teams



- ▶ Alameda County Fire Department Search and Rescue Team
- ▶ Fremont Fire Department
- ▶ Livermore-Pleasanton Fire Department
- ▶ Marin County JPA HazMat Team
- ▶ Marin County Urban Search & Rescue Team
- ▶ Monterey County Urban Search & Rescue Team
- ▶ Mountain View Fire Department
- ▶ Napa County Fire Department
- ▶ Oakland Fire Department
- ▶ Palo Alto Fire Department
- ▶ Richmond Fire Department
- ▶ San Jose Fire Department
- ▶ Sacramento Metropolitan Fire Department
- ▶ Santa Clara City Fire Department
- ▶ Santa Clara County Fire Department
- ▶ South San Francisco Fire Department
- ▶ Sunnyvale Public Safety HazMat Team

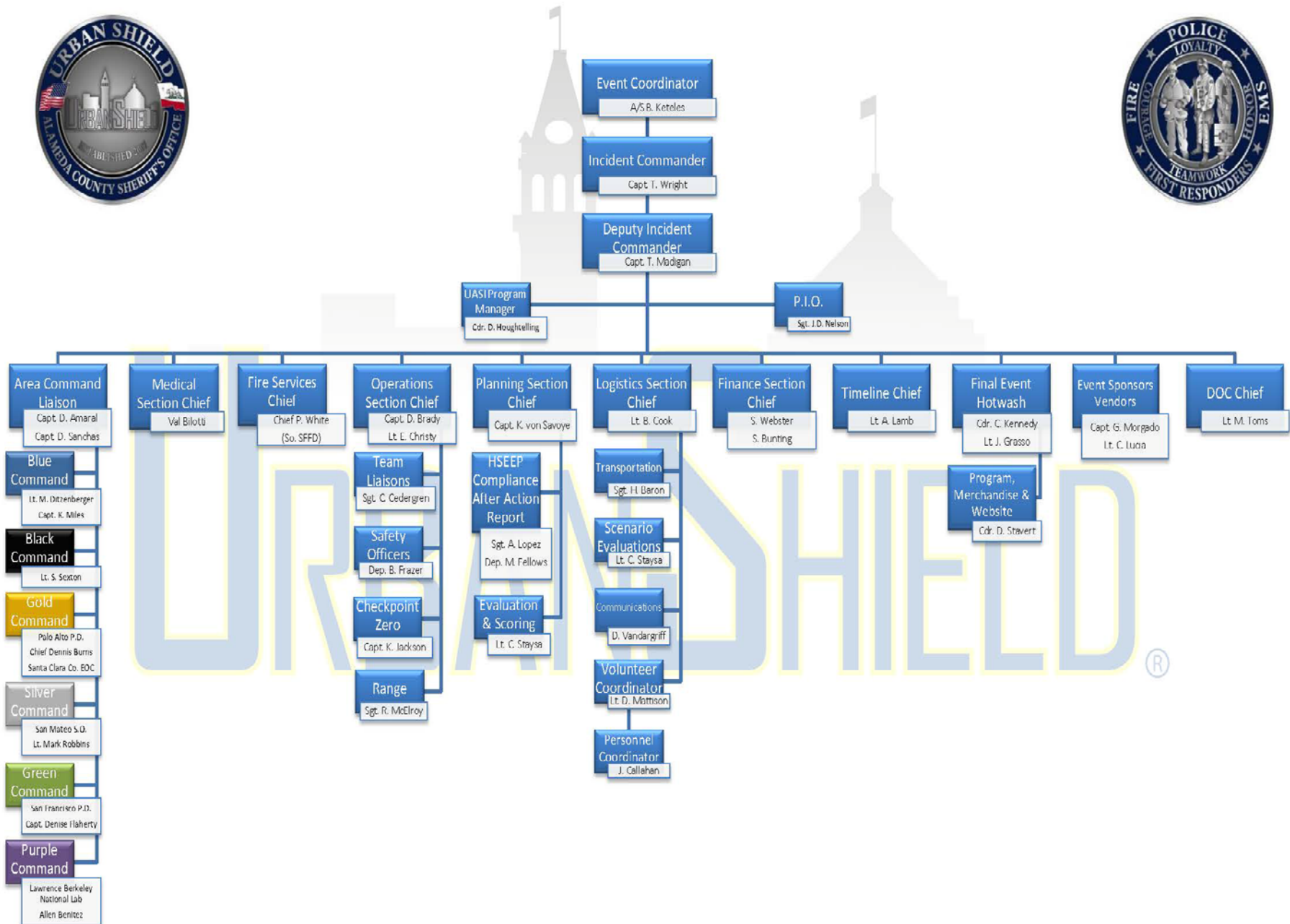
Full-Scale Exercise Scenarios

- 27 SWAT Scenarios
- 4 Medical Checkpoints and Mobile Medical Checkpoints
- 1 EOD Scenario
- 11 Fire Scenarios





ALAMEDA COUNTY SHERIFF'S OFFICE URBAN SHIELD 2012



Urban Shield Planning 2012



- Planning for Urban Shield follows the Homeland Security Exercise Evaluation Program (HSEEP)
- Capabilities Based Planning
- Scenario concepts are drawn from the UASI Strategic Plan and Gap Analysis, After Action Reports from previous Urban Shield Events, Regional Input and current terrorism trends, both national, and international provided by the Regional Fusion Center
- Training is held at Critical Infrastructure sites identified through the Bay Area UASI threat assessment
- Scenarios must contain a nexus to terrorism to comply with HSEEP

HSEEP

Homeland Security Exercise Evaluation Program



- As part of the HSEEP methodology Goals, Capability gaps, and technology that will be tested, are included in the Operation Plan.
- Focus will be placed on what is to be tested when scenarios are being designed.



Recent Terrorism Events

- Norway Bombing
- Bangkok Bombing
- Norwegian Island Shooting
- Mumbai Bombings
- Syria Attacks
- Ohio School Shootings
- Nigeria Terrorist Attack
- Mexico Casino Arson Attack
- Iran Assassination Plots (Mexican Drug Cartels)
- Various Campus Shootings
- Colorado Theater Shooting

New Technology Utilized in Urban Shield



- Urban Shield utilizes new technologies to help make the job of first responders safer and more effective.
- Technology is placed into scenarios to be field-tested and evaluated for effectiveness.
- Over the years, equipment utilized during Urban Shield has later been utilized in real-world events throughout our region, ultimately reducing the risk to first responders and enhancing safety to the community (cite example of San Leandro).
 - SKIDDS, robots, APC, pole cameras, HNU equipment, ballistic shields

Training Seminar



- Training Day (4 presenters)
 - Virginia Beach Fire Department Fire Chief Steve Cover will present on the multi-jurisdictional, multi-disciplinary response to an F-18 Fighter jet crash into a 40 unit apartment complex in Virginia Beach.
 - The response was unique in that it involved local, state, federal agencies along with a military response utilizing the unified command system.
- Thousands of first responders (EMS, Fire, L.E.-SWAT, Medical) have attended the valuable training seminars over the past five years.

Hotwash/Debrief



- Vendor Show
- Hotwash/Debrief
- Awards Presentation
- Final Banquet at the Oakland Marriott



■ Questions?