

Views > Public

- Administrative Regions
- California EF
- Other Layers



200 mi
200 km



Traffic ? Map Satellite Hybrid Terrain



Views > Public

- Administrative Regions
- Management Regions
- Operational Areas
- Mutual Aid Regions
- Bay Area UASI Counties
- California EF
- Other Layers

200 mi
200 km

Traffic ? Map Satellite Hybrid Terrain



Views

Tools

Map View

Data View

Views > Public



200 mi
200 km

Traffic ?

Map

Satellite

Hybrid

Terrain

Administrative Regions

Management Regions

Coastal Region

Inland Region

Southern Region

Operational Areas

Mutual Aid Regions

Region 1

Region 2

Region 3

Region 4

Region 5

Region 6

All Regions

Bay Area UASI Counties

Alameda

Contra Costa

Marin

Monterey

Napa

San Benito

San Francisco

San Mateo

Santa Clara

Santa Cruz

Solano

Sonoma

All Areas

California EF

Other Layers



search the map

Search



Views

Tools

Map View

Data View

Views > Public

Administrative Regions

Management Regions

Operational Areas

Mutual Aid Regions

Bay Area UASI Counties

- Alameda
- Contra Costa
- Marin
- Monterey
- Napa
- San Benito
- San Francisco
- San Mateo
- Santa Clara
- Santa Cruz
- Solano
- Sonoma
- All Areas

California EF

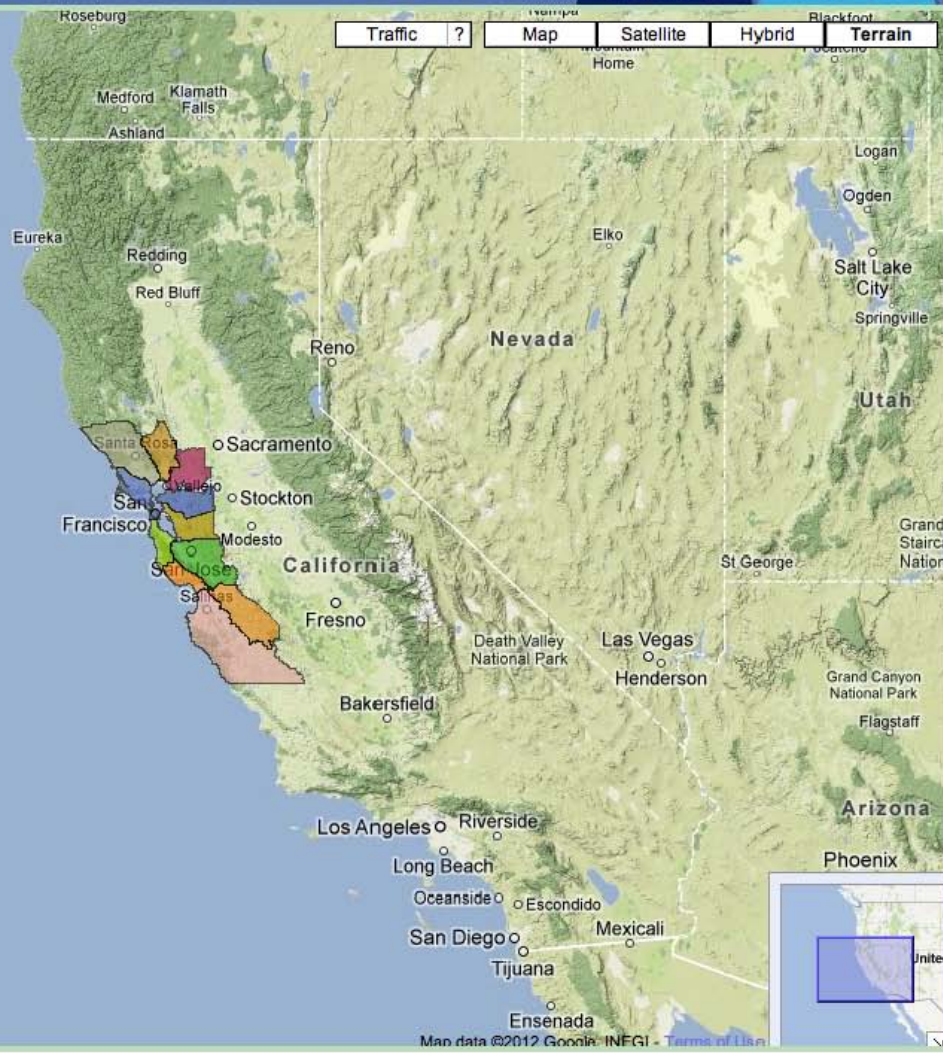
Other Layers



100 mi
200 km



Traffic ? Map Satellite Hybrid Terrain



Google search the map Search

Views > Public

Administrative Regions

California EF

- + EF 1. Transportation
- + EF 2. Communications
- + EF 3. Public Works & Engineering
- + EF 4. Firefighting
- + EF 5. Emergency Management
- + EF 6. Mass Care, Emergency Assista
- + EF 7. Logistics Management and Res
- + EF 8. Public Health & Medical Service
- + EF 9. Search and Rescue
- + EF 10. Oil and Hazardous Material
- + EF 11. Agriculture & Natural Resourc
- + EF 12. Energy
- + EF 13. Public Safety & Security
- + EF 14. Long-Term Community Recov
- + EF 15. External Affairs
- + EF 16. Evacuation
- + EF 17. Volunteer & Donations Manag

Other Layers



200 mi
200 km



Traffic ? Map Satellite Hybrid Terrain



Views

Tools

Map View

Data View

Views > Public

Administrative Regions

Management Regions

Operational Areas

Mutual Aid Regions

Bay Area UASI Counties

- Alameda
- Contra Costa
- Marin
- Monterey
- Napa
- San Benito
- San Francisco
- San Mateo
- Santa Clara
- Santa Cruz
- Solano
- Sonoma
- All Areas

California EF

Other Layers



100 mi
200 km



Traffic ? Map Satellite Hybrid Terrain



Google search the map Search

Views

Tools

Map View

Data View

Views > Public

Administrative Regions

Management Regions

- Coastal Region
- Inland Region
- Southern Region

Operational Areas

Mutual Aid Regions

- Region 1
- Region 2
- Region 3
- Region 4
- Region 5
- Region 6
- All Regions

Bay Area UASI Counties

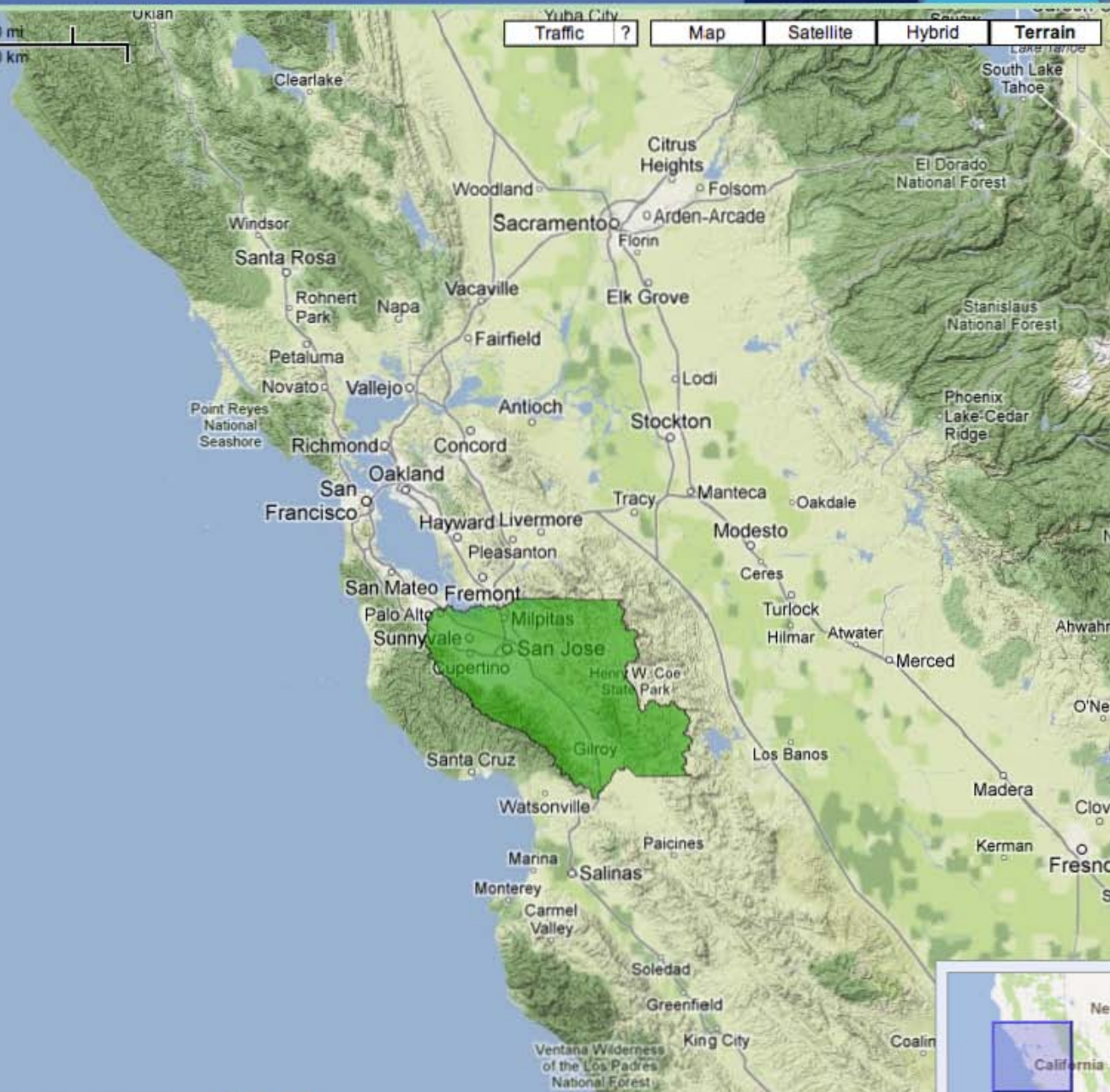
- Alameda
- Contra Costa
- Marin
- Monterey
- Napa
- San Benito
- San Francisco
- San Mateo
- Santa Clara
- Santa Cruz
- Solano
- Sonoma
- All Areas

California EF

Other Layers



Traffic ? Map Satellite Hybrid Terrain



Views

Tools

Map View

Data View

Views > Public

Administrative Regions

California EF

EF 1. Transportation

EF 2. Communications

EF 3. Public Works & Engineering

EF 4. Firefighting

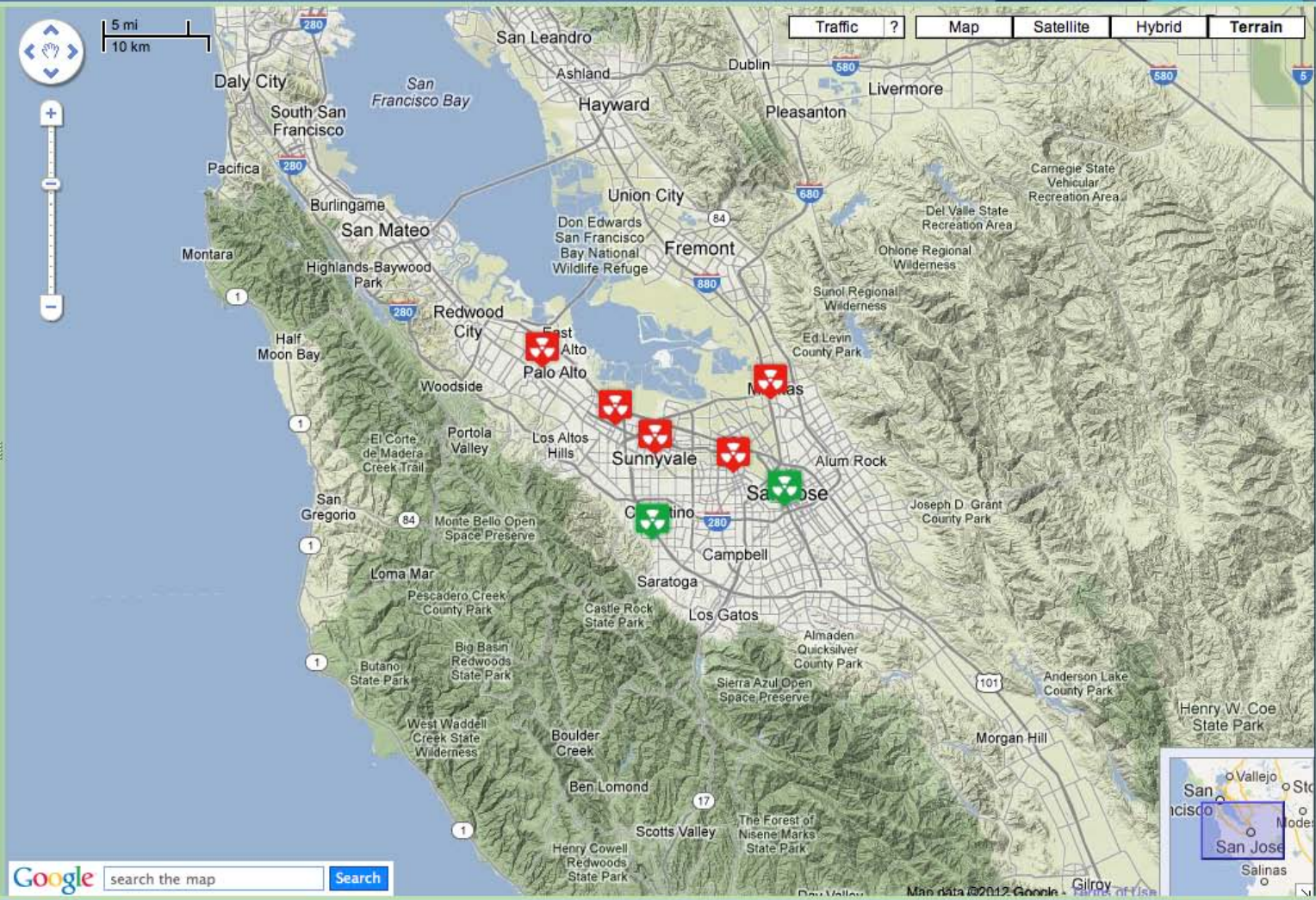
- Aircraft Rescue Firefighting
- Breathing Apparatus Support
- Brush Patrol, Firefighting (T)
- Crew Transport (Firefighting)
- Engine, Fire (Pumper)
- Field Mobile Mechanic
- Fire Boat
- Foam Tender, Firefighting
- Food Dispenser Unit
- Fuel Tender (Gasoline, Diesel)
- Hand Crew
- HazMat Entry Team
- Alameda
- Contra Costa
- San Francisco
- San Mateo
- Santa Clara
- Solano
- Napa
- Sonoma



5 mi
10 km



Traffic ? Map Satellite Hybrid Terrain



Google search the map Search

Views

Tools

Map View

Data View

Export to Excel

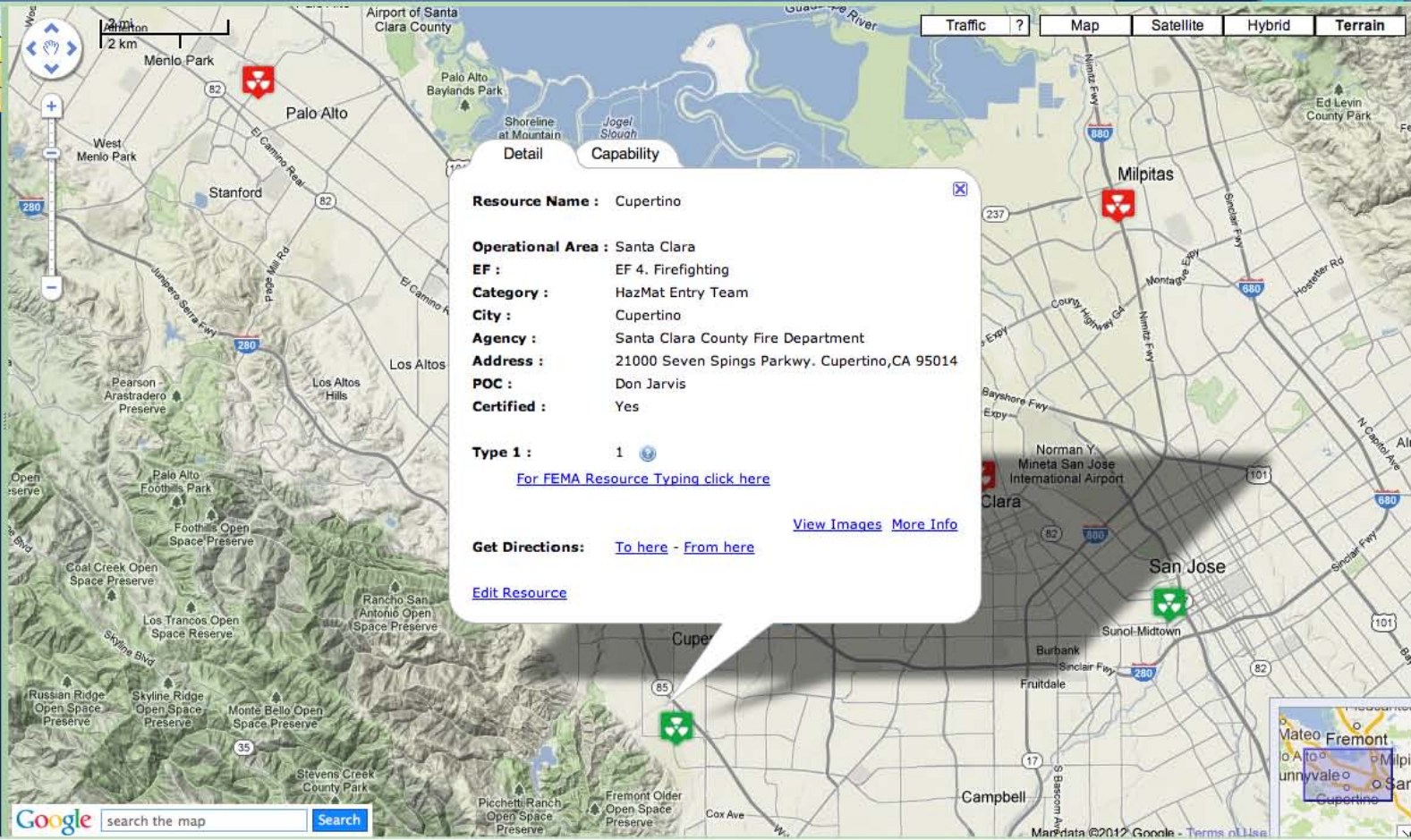
Export to KML

S.No.	Typed Emergency Function	OA	FEMA I20 Defined Capability	City	Certified	Address	POC Name	
1	EF 4. Firefighting	Santa Clara	HazMat Entry Team	Cupertino	Yes	21000 Seven Spings Parkwy.,Cupertino,CA 95014	Don Jarvis	Dor
2	EF 4. Firefighting	Santa Clara	HazMat Entry Team	Milpitas	No	775 Barber Lane,Milpitas,CA 95035	Battalion Chief	rmih
3	EF 4. Firefighting	Santa Clara	HazMat Entry Team	Mountain View	No	1000 Villa St.,Mountain View,CA 94041	Battalion Chief	inf
4	EF 4. Firefighting	Santa Clara	HazMat Entry Team	Palo Alto	No	250 Hamilton Ave.,Palo Alto,CA	Dan Lindsey, 650.329.2515, dan.lindsey@city	
5	EF 4. Firefighting	Santa Clara	HazMat Entry Team	San Jose	Yes	255 So. Montgomery St.,San Jose,CA 95110	Operations Chief	dar
6	EF 4. Firefighting	Santa Clara	HazMat Entry Team	Santa Clara	No	1500 Warburton Ave.,Santa Clara,CA 95050	Duty Battalion	inf
7	EF 4. Firefighting	Santa Clara	HazMat Entry Team	Sunnyvale	No	700 All American Way,Sunnyvale,CA 94086	Battalion Chief	rda

Typed Resource Definitions

Fire and Hazardous Materials Resources





Detail **Capability**

Resource Name : Cupertino

Operational Area : Santa Clara

EF : EF 4. Firefighting

Category : HazMat Entry Team

City : Cupertino

Agency : Santa Clara County Fire Department

Address : 21000 Seven Spings Parkwy. Cupertino,CA 95014

POC : Don Jarvis

Certified : Yes

Type 1 : 1

[For FEMA Resource Typing click here](#)

[View Images](#) [More Info](#)

Get Directions: [To here](#) - [From here](#)

[Edit Resource](#)



SANTA CLARA COUNTY

CALL EMERGENCY 911 FIRE POLICE MEDICAL

HM2

PARAMEDIC

HM2