



URBAN SHIELD®

ALAMEDA COUNTY SHERIFF'S OFFICE

TRAIN WITH PURPOSE • SERVE WITH HONOR

October 26-29, 2012



RISK OVERVIEW ASSESSMENT

- Law enforcement, fire and EMS personnel, representing agencies throughout the Bay Area UASI Region, participated in some, or all, of the 47 realistic scenarios. Their capabilities and equipment were evaluated by related experts, in order to provide an accurate regional assessment that result in a meaningful Gap Analysis, After Action Report (AAR) and Improvement Plan.
- Risk Management to develop and maintain the tracking of regional assets so that we verify their location, level of readiness and capability to improve regional preparedness.



INTEGRATED CRITICAL INFRASTRUCTURE

- The overarching goals of Urban Shield is to provide a multi-layered training exercise to enhance the skills and abilities of regional first responders, as well as those responsible for coordinating and managing large scale events. This exercise is designed to identify and stretch regional resources to their limits while expanding regional collaboration and building positive relationships. In addition, this exercise provides increased local business and critical infrastructure collaboration.
- Urban Shield 2012 operated under the principals of the National Incident Management System (NIMS), Standardized Emergency Management System (SEMS) and the Incident Command System (ICS) structure. Regional emergency management personnel controlled the exercise utilizing the Emergency Operation Centers in San Francisco, San Mateo, and Alameda Counties, as well as the Lawrence Berkeley National Laboratory functioning as the Area Commands. Alameda County OHSES served as the Department Operations Center (DOC).



TARGET CAPABILITIES

- The National Planning Scenarios and the establishment of the National Preparedness Priorities have steered the focus of homeland security toward a capabilities-based planning approach. This type of planning is generally conducted with some uncertainty, because it is extremely difficult to forecast future disasters with a high level of accuracy. Therefore, capabilities-based planning takes an all-hazards approach to planning and preparation and builds capabilities that can be applied to a wide variety of incidents.
- States and urban areas use capabilities-based planning to identify a baseline assessment of their homeland security efforts by comparing their current capabilities against the Target Capabilities List (TCL) and the critical tasks of the Universal Task List (UTL). This approach identifies gaps in current capabilities and focuses efforts on identifying and developing priority capabilities and tasks for our region. These priority capabilities are articulated in the Bay Area Urban Area Security Initiative (UASI) Multi-Year Training and Exercise Plan, of which this exercise is a component.



PROGRAM AREAS

Exercise Site	Target Capability	Objective
Overarching Objectives		
All Sites	Common Mission: Communications	Test new regional communication capabilities.
All Sites	Respond Mission: On Site Incident Management	Regional control and coordination, utilizing the ICS structure for specialized emergency response teams will be consistent with NIMS and SEMS.

PROGRAM AREAS

Exercise Site	Target Capability	Objective
Site-Specific Objectives		
All Sites	Respond Mission: On-Site Incident Management	Assess the Region's ability to safely and appropriately conduct an initial assessment at critical incident scenes.
All Sites	Prevent Mission: Counter-Terror Investigation and Law Enforcement	Evaluate Regional tactical capabilities related to law enforcement intervention/interdiction operations, develop appropriate action plans, personnel deployment, hostage rescue, active shooter and dignitary protection.
All Sites	Prevent Mission: Counter-Terror Investigation and Law Enforcement	The Region will demonstrate the capability to successfully deter, detect, disrupt, investigate, and/or apprehend suspects involved in criminal activities related to homeland security.

PROGRAM AREAS

Exercise Site	Target Capability	Objective
Site-Specific Objectives		
Scenarios: #8, 9, 14, 20, 21, 22, 23 & 24	Protect Mission: Critical Infrastructure Protection	Integrate critical infrastructure sites and their onsite personnel into a collaborative, unified command response to emergency/disaster events.
Scenario: #27	Respond Mission: Emergency Public Safety & Security Response	Evaluate the integration between law enforcement and EMS teams in a “warm zone” environment with victims requiring immediate medical intervention and evacuation.
Scenarios: #F2 and F4	Prevent Mission: CBRNE Detection	Assess USAR, HazMat and EOD core competencies in response to a CBRNE incident.
Scenarios: #E-1, E2, & E3	Respond Mission: Explosive Device Response Operations	Evaluate Regional Bomb Squads ability to properly respond, assess and render safe improvised explosive devices and other hazards.

SUPPORTING AGENCIES

REGIONAL AGENCIES/ORGANIZATIONS

- Alameda County Sheriff's Office
- Alameda County District Attorney
- Alameda County Emergency Medical Services
- Alameda County Fire Department
- Alameda County Probation Department
- Alameda Police Department
- Albany Police Department
- BART Police Department
- Belmont Fire Department
- Berkeley Police Department
- Castro Valley Unified School District
- Central County Fire Department
- City of Foster City
- City and County of San Francisco
- City of South San Francisco
- Coastside Fire District
- Contra Costa County Health Department
- Contra Costa County Sheriff's Office
- Corte Madera Fire Department
- Daly City Police Department
- East Bay Regional Parks District
- East Bay Regional Parks Police Department
- Emeryville Police Department
- Foster City Corporation Yard
- Foster City Fire Department
- Foster City Police Department
- Fremont Fire Department
- Fremont Police Department
- General Services Agency Department
- Hayward Police Department
- Livermore Police Department
- Livermore-Pleasanton Fire Department
- Marin County JPA Hazmat Team
- Marin County Urban Search and Rescue Team
- Menlo Park Fire Department
- Modesto Police Department
- Morongo Valley Fire Department
- Napa County Fire Department



SUPPORTING AGENCIES

REGIONAL AGENCIES/ORGANIZATIONS

- Napa Interagency Rescue Team
- Newark Police Department
- North County Fire Authority
- Oakland Fire Department
- Oakland Housing Authority Police Department
- Oakland Police Department
- Palo Alto Police Department
- Pittsburg Police Department
- Redwood City Police Department
- Richmond Fire Department
- Richmond Police Department
- Rohnert Park Department of Public Safety
- Sacramento Police Department
- San Bruno Jail Facility
- San Francisco BART District – Colma Station
- San Francisco County Sheriff's Department
- San Francisco Fire Department
- San Francisco Police Department
- San Jose Fire Department
- San Jose Police Department
- San Leandro Police Department
- San Mateo County
- San Mateo County Fire Department
- San Mateo County Health Department
- San Mateo County Sheriff's Office
- San Ramon Valley Fire Department
- Santa Clara City Fire Department
- Santa Clara County Fire Department
- Santa Rosa Police Department
- Seaside Fire Department
- Sonoma County Sheriff's Office
- South San Francisco Fire Department
- South San Francisco Public Works
- Southern Marin Fire District
- Stanislaus County Sheriff's Office
- Sunnyvale Department of Public Safety
- Union City Police Department
- Walnut Creek Police Department

SUPPORTING AGENCIES

STATE AGENCIES/ORGANIZATIONS

- Angel Island State Park
- Cal Fire
- Cal-Explorer Search and Rescue
- California Army National Guard
- California Department of Corrections and Rehabilitation
- California Department of Transportation (Caltrans) – Bay Bridge
- California Highway Patrol
- California State Parks
- California State Sheriff's Association (CSSA)
- California State University East Bay
- California State University East Bay Police Department
- Castro Valley Unified School District
- Commission on Peace Officer Standards and Training (P.O.S.T.)
- Las Positas College
- Northern California Regional Intelligence Center
- University of California – Berkeley
- University of California – Berkeley Police Department



SUPPORTING AGENCIES

FEDERAL AGENCIES/ORGANIZATIONS

- Bay Area Urban Area Security Initiative
- 95th Civil Support Team
- Amtrak - Oakland
- Amtrak Police Department
- Bureau of Alcohol Tobacco Firearms Explosives (ATF)
- Drug Enforcement Agency (DEA)
- Federal Bureau of Investigations – San Francisco (FBI)
- Federal Emergency Management Agency (FEMA)
- Lawrence Berkeley National Laboratory (LBNL)
- Louisiana State University - National Center for Biomedical Research & Training
- NAS Alameda - US Maritime Administration
- National Weather Service
- Navy Operational Support Center Alameda
- Transportation Security Administration (TSA)
- United States Department of Homeland Security (DHS)
- United States Coast Guard
- United States Marshals
- United States Navy



SUPPORTING AGENCIES

INTERNATIONAL AGENCIES/ORGANIZATIONS

- Consulate General of Israel – San Francisco
- Country of Brazil
- Country of Guam
- Israeli Yamam
- Country of Norway
- Country of Switzerland



SUPPORTING AGENCIES

PUBLIC/PRIVATE PARTNERS

- American Medical Response (AMR)
- Boy Scouts of America
- Chavez Management Group
- Children's Hospital and Research Center
- Cisco Systems
- Cobalt
- Corizon Health Services
- Cytel Group
- Denevi Video
- Dolphin Graphics
- Elite Security Service
- Execushield
- Faber Trust Group
- FedEx
- Fulcrum Concepts, LLC
- Marriott Convention Center – Oakland
- NorCal Ambulance
- Novartis – Alpha Act
- Operational Medicine Institute
- Paramedics Plus
- Port of Oakland
- Port of Redwood City
- QUEST, Quality Emergency & Safety Training
- San Francisco PUC Watershed
- TransAmerica Pyramid Properties
- Verizon Wireless



PARTICIPATING TEAMS

31 SWAT PARTICIPATING TEAMS



Alameda County Sheriff's Office



Berkeley Police Department



Brazil (BOPE)



California Department of Corrections



Chicago Police Department



Contra Costa County Sheriff's Office



Daly City Police Department



East Bay Regional Parks Police



East County Tactical



Fremont Police Department



Hayward Police Department



Marin County Sheriff's Office



Newark Police Department



Oakland Police Department



Palo Alto Police Department



Redwood City Police Department

PARTICIPATING TEAMS

31 SWAT PARTICIPATING TEAMS



Richmond Police Department



Sacramento Police Department



San Francisco Police Department



San Francisco Sheriff's Department



San Jose Police Department



San Leandro Police Department



San Mateo County Sheriff's Office



Santa Clara County Sheriff's Office



Sonoma County Sheriff's Office



Stanislaus County Sheriff's Office



Sunnyvale Police Department



Travis County Sheriff's Office, Texas



Union City Police Department



U.C. Berkeley Police Department



U.S. Marine Corp Force Recon Team

PARTICIPATING TEAMS

19 PARTICIPATING FIRE AGENCIES



Alameda County Fire Department



Belmont Fire Department



Central County Fire Department



Combined Contra Costa HazMat Team



Fremont Fire Department



Idaho CST



Livermore-Pleasanton Fire Department



Marin County JPA



Marin County Regional Task Force



Menlo Park Fire Department



Napa Interagency Rescue Team



Oakland Fire Department



Roseville Fire Department



San Jose Fire Department



Santa Clara City Fire Department



Santa Clara County Fire Department



South San Francisco Fire Department



Sunnyvale Department Public Safety

PARTICIPATING TEAMS

8 EOD PARTICIPATING TEAMS



Berkeley Police Department Bomb Squad



Monterey County Sheriff's Office Bomb Squad



San Mateo County Sheriff's Office Bomb Squad



Santa Clara County Sheriff's Office Bomb Squad



Santa Cruz County Sheriff's Office Bomb Squad



U.C. Berkeley Police Department Bomb Squad



U.S. Air Force Bomb Squad



Walnut Creek Police Department Bomb Squad

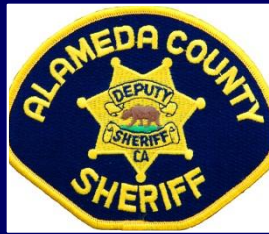
HOST AGENCIES

Black Command



Alameda County
Sheriff's Office
Sheriff
Gregory J. Ahern

Blue Command



Alameda County
Sheriff's Office
Sheriff
Gregory J. Ahern

Green Command



San Francisco Police
Department
Chief
Greg Suhr

Gold Command



Alameda County
Sheriff's Office
Sheriff Gregory J.
Ahern
Palo Alto Police
Department
Chief Dennis Burns

Purple Command



Lawrence Berkeley
National Laboratory

Lawrence-
Berkeley National
Laboratory
Director
Allen Benitez

Red Command



South San
Francisco Fire
Department
Chief
Philip White

Silver Command



San Mateo
County Sheriff's
Office
Sheriff
Greg Munks

EMERGENCY OPERATION CENTERS

- 1 Departmental Operation Center
 - Alameda County Sheriff's Office – OHSES
- 6 Stationary Area Commands
 - Alameda County Sheriff's Office EOC – SRJ
 - Lawrence Berkeley National Laboratory
 - San Francisco Police Department – EOC
 - San Leandro Police Department – EOC
 - San Mateo County Sheriff's Office – EOC
 - South San Francisco Fire Department - EOC
- 1 Mobile Area Command
 - Alameda County Sheriff's Office/Palo Alto Police Department – OMC



MEDICAL CHECKPOINTS

QUEST QUALITY EMERGENCY & SAFETY TRAINING

- Alameda County Regional Training Center – Black Command
- Crystal Springs Reservoir – Silver Command
- Angel Island State Park – Green Command
- Old Mervyn's Headquarters – Blue Command



SCENARIOS

- 27 Tactical Scenarios
- 1 Technology Showcase
- 4 Medical Checkpoints
- 3 EOD Scenarios
- 12 Fire Scenarios



TERRORIST ATTACK ON PUBLIC TRANSIT

Host: BART Police Department - Silver Command



The teams were evaluated on their ability to conduct a hostage rescue in a crowded linear environment.

- *Location: Colma BART Station*



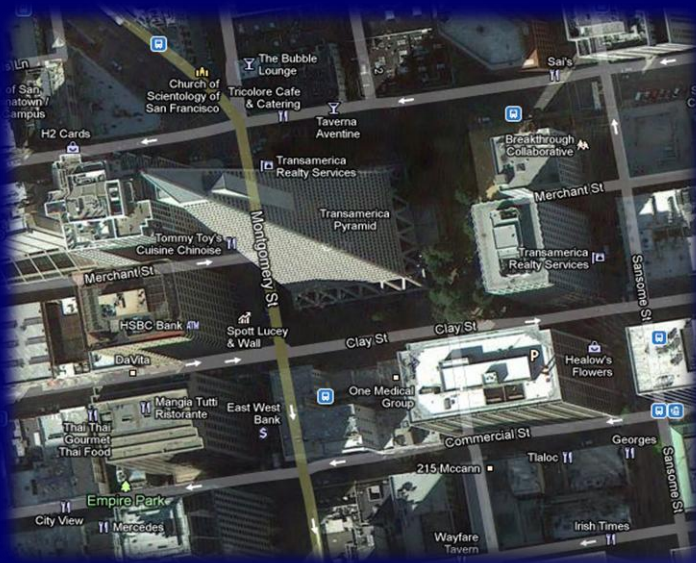
TRANSAMERICA PYRAMID CENTER TAKEOVER

Host: San Francisco Police Department - Green Command



This scenario was developed to test tactical teams response to a homegrown terrorist attack on a San Francisco high rise building.

- *Location: Transamerica Pyramid Center*



- *Technology: Digital Sandbox-Field Reporter*

Digital Sandbox
Leader in Public Safety Risk Management

HUMAN TRAFFICKING INTERDICTION

Host: Execushield - Green Command



Teams were evaluated on their ability to interdict a terrorist human trafficking ring by gathering/analyzing intelligence and rescuing hostages.

- *Location: Angel Island State Park*



- *Technology: Morovision-Night Vision*



CRITICAL INFRASTRUCTURE ASSAULT

Host: Modesto Police Department - Gold Command



Tactical teams were provided a scenario that required them to overcome challenges involving an unfamiliar infrastructure environment and perform a hostage rescue.

- *Location: San Francisco-Oakland Bay Bridge*



- *Technology: Recon-Robotics Throwbot XT*

RECON ROBOTICS

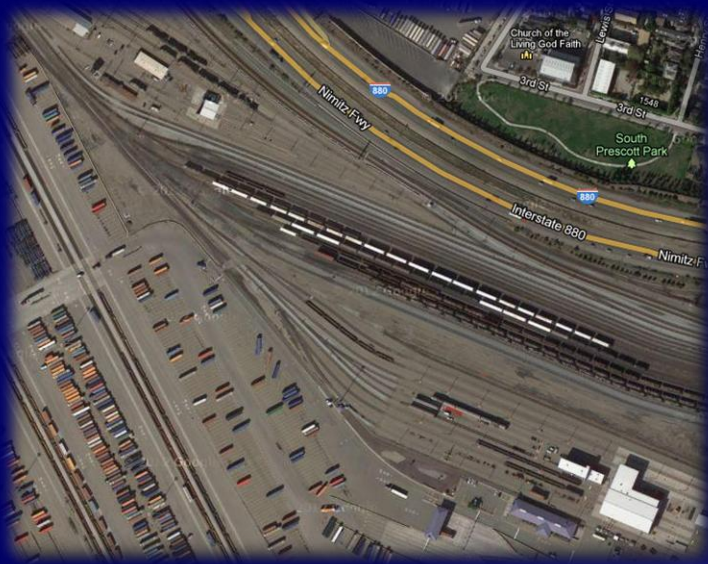
COMMUTER TRAIN ASSAULT

Host: AMTRAK Police Department - Blue Command



Teams were evaluated on their ability to operate in a linear environment, intelligence gathering and utilizing a sound tactical approach.

- *Location: Oakland AMTRAK Yard*



- *Technology: Lion/Avon-Level 3 Suit*



MARITIME INTERDICTION

Host: Alameda County Sheriff's Office - Gold Command



In support of this effort, tactical teams were provided with a scenario evaluating their ability to approach, board and secure a large ship in a marine environment.

- *Location: Former NAS Alameda, Pier 2*



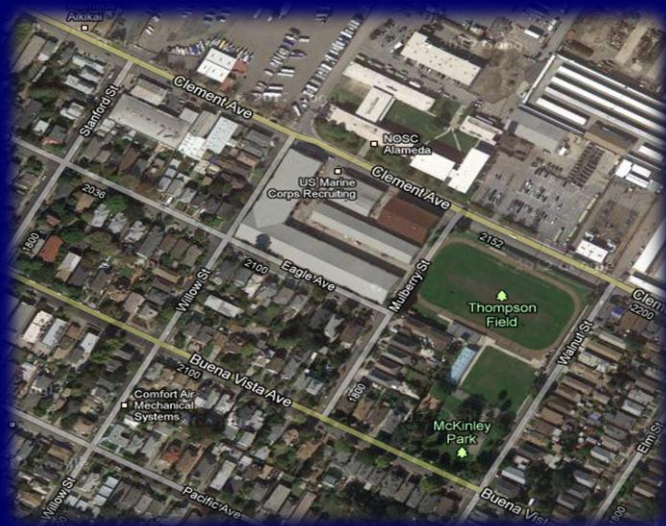
MILITARY INSTALLATION ASSAULT

Host: Alameda Police Department - Gold Command



Tactical teams were evaluated on their ability to clear large open areas, gather intelligence and rescue any hostages.

- *Location: Naval Operations Support Center (NOSC) Alameda*



AIRPLANE HIJACKING

Host: Alameda County Sheriff's Office - Gold Command



Teams were evaluated on their ability to use intelligence and equipment to conduct a dynamic hostage rescue.

- *Location: Oakland Airport*



- *Technology: Black OPS-Airsoft Weaponry, QinetiQ North America-Talon Robot*



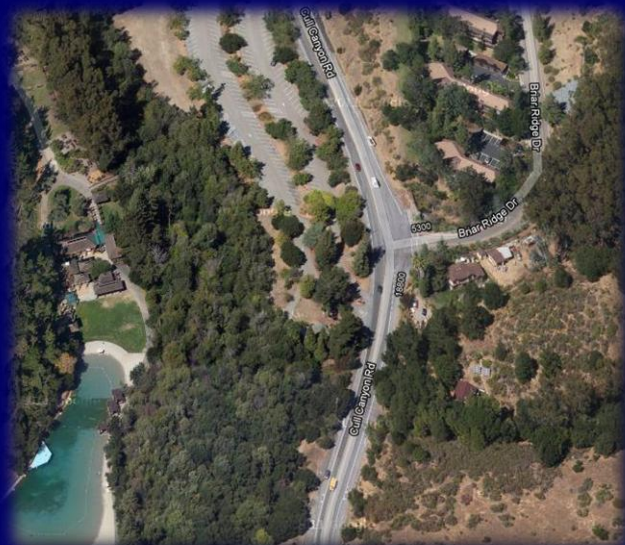
CHEMICAL SABOTAGE

Host: East Bay Regional Parks Police Department - Blue Command



This scenario evaluated tactical teams ability to stop a hazardous chemical release in a large open area which could result in the exposure of hazardous materials to the public.

- *Location: Cull Canyon Park, Castro Valley*



SCENARIO #30: DOMESTIC TERRORIST SCHOOL TAKEOVER

Host: Alameda County Sheriff's Office - Blue Command



Tactical teams were provided an active shooter scenario testing their ability to effectively engage the terrorist(s) and effect a rescue of the hostage(s).

- *Location: Canyon Middle School, Castro Valley*



- *Technology: Applanix-Mobile Mapping and Positioning Solutions (3D), Black OPS-Airsoft Weaponry*



HOSPITAL ASSAULT

Host: Alameda County Sheriff's Office - Purple Command



Tactical teams were tested on their ability to maintain communications, search large areas, and maintain 360 degree coverage.

- *Location: Children's Hospital Research Facility, Walnut Creek*



- *Technology: Digital Sandbox-Field Reporter*

Digital Sandbox
Leader in Public Safety Risk Management

EXPLOSIVE ORDNANCE DISPOSAL RESPONSE 2

Host: Alameda County Sheriff's Office – Black Command



Teams were also evaluated on their ability to effectively disarm any devices they encountered once on scene.

- *Location: Alameda County EOD Bomb Range*



EXPLOSIVE ORDNANCE DISPOSAL RESPONSE 3

Host: Alameda County Sheriff's Office – Black Command



Two teams worked together to enter a booby trapped apartment, render safe a number of booby traps, and analyze chemicals present for their use in IEDs.

- *Location: Alameda County EOD Bomb Range*



- *Technology: Alluvium-Hazmaster G3*



ENVIRONMENTAL TERRORIST SABOTAGE

Host: South San Francisco Fire Department – Red Command



Responding US&R task force teams were confronted with multiple and conflicting priorities while freeing two trapped construction workers.

- *Location: South San Francisco Fire Department Trench Rescue Training Site*



- *Technology: Dragon Fire-Gloves; Forcible Entry-Breachable Door*



IED EXPLOSION IN A CONFINED SPACE

Host: South San Francisco Fire Department – Red Command



An IED placed in a refinery pipe maze by environmental terrorists was accidentally detonated by bomb squad personnel while attempting to render the device safe.

- *Location: South San Francisco Vehicle and Equipment Maintenance Facility*



- *Technology: Foxfury-Lighting*



BUILDING COLLAPSE

Host: South San Francisco Fire Department – Red Command



A member of the Sovereign Citizen movement drove a truck into a government building which resulted in a partial building collapse and fire.

- *Location: South San Francisco Fire Department Collapse Structure Training Facility*



- *Technology: Parrot-AR Drone*

Parrot
AR.DRONE

HIGH-ANGLE RESCUE

Host: South San Francisco Fire Department – Red Command



The sniper attack on a government high-rise building by a Homegrown Violent Extremist (HVE) left two window washers injured.

- *Location: Boston Properties, South San Francisco*



COOPERATIVE USAR/HAZMAT RESPONSE

Host: South San Francisco Fire Department – Red Command



US&R and Hazmat task-force teams cooperatively responded to a car bomb detonated by extremists that had resulted in a collapse of a medical research facility.

- *Location: Alexandria Development Building, South San Francisco*



- *Technology: Applanix-Mobile Mapping and Positioning Solutions (3D); Western Shelter-Large Tents; Grainger-Trailer*



REGIONAL TRAINING SEMINAR & VENDOR SHOW

MONDAY, OCTOBER 29, 2012 | 0830-1500 HRS.
OAKLAND MARRIOTT CONVENTION CENTER



Thwarting a Jihad in Brooklyn: The NYPD Raid That Stopped America's First Suicide Bombers

Samuel M Katz, Author, Advisor, Lecturer



Lessons Learned – Seal Beach Shooting

Tim Olson, Captain, Seal Beach Police Department

REGIONAL TRAINING SEMINAR & VENDOR SHOW

MONDAY, OCTOBER 29, 2012 | 0830-1500 HRS.
OAKLAND MARRIOTT CONVENTION CENTER



Lessons Learned - Oikos University Tragedy
Brian Medeiros, Captain, Oakland Police Department



Response to Navy Jet Crash in Virginia Beach Neighborhood
Steven Cover, Fire Chief, City of Virginia Beach

HOT WASH / DINNER BANQUET

MONDAY, OCTOBER 29, 2012 | 1700 - 2100 HRS.

OAKLAND MARRIOTT CONVENTION CENTER

- Program will include:
 - Traditional of Bagpipes and Honor Guards
 - Keynote Speaker



Raymond Smith, Rear Admiral, U.S. Navy (Retired)

- Hot Wash
- Presentation of Awards

FUTURE URBAN SHIELD GOALS

- Prepare for potential Terrorist Threats and Natural Disasters.
- Identify New Technology and Operational Plans that will improve our Region.
- Coordinate efforts to address training and equipment gaps identified as a result of the Urban Shield Exercise.
- Incorporate the Core Capabilities into the planning methodology for Urban Shield Full-Scale Exercise

