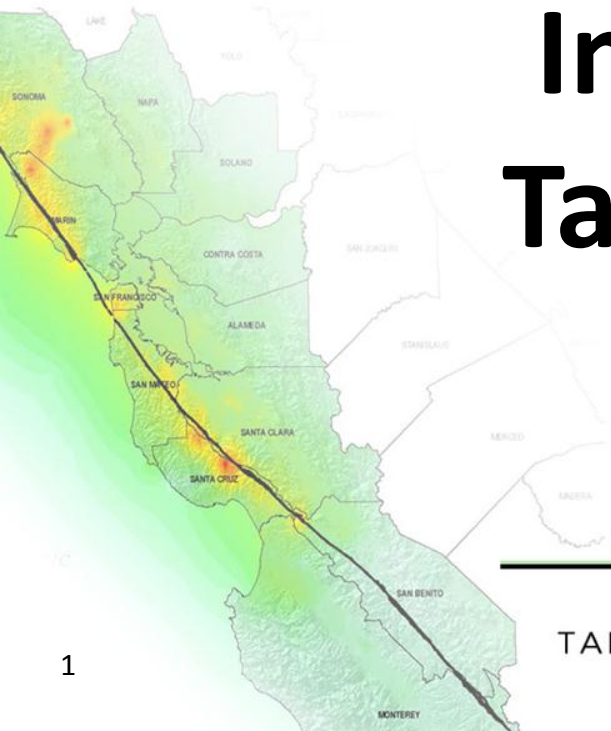




# Interim Housing Tabletop Exercise

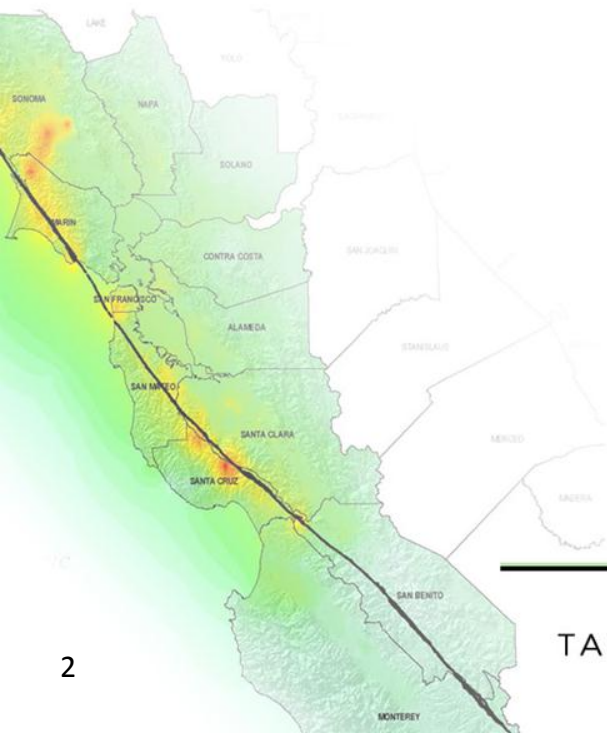
August 6, 2013



TABLETOP EXERCISE



# Opening, Introductions, & Overview

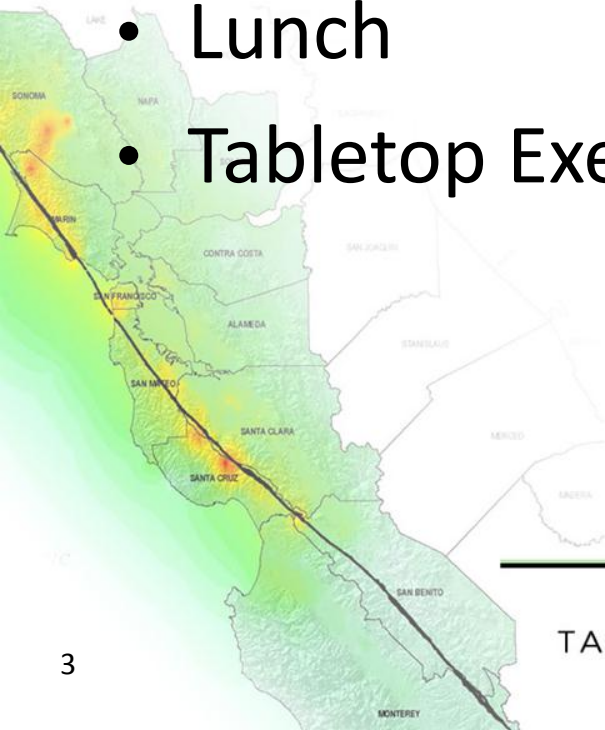


TABLETOP EXERCISE



# Welcome and Opening Remarks

- Sign In
- RCPGP Regional Match and Time Collection Forms
- Lunch
- Tabletop Exercise – Materials Folder

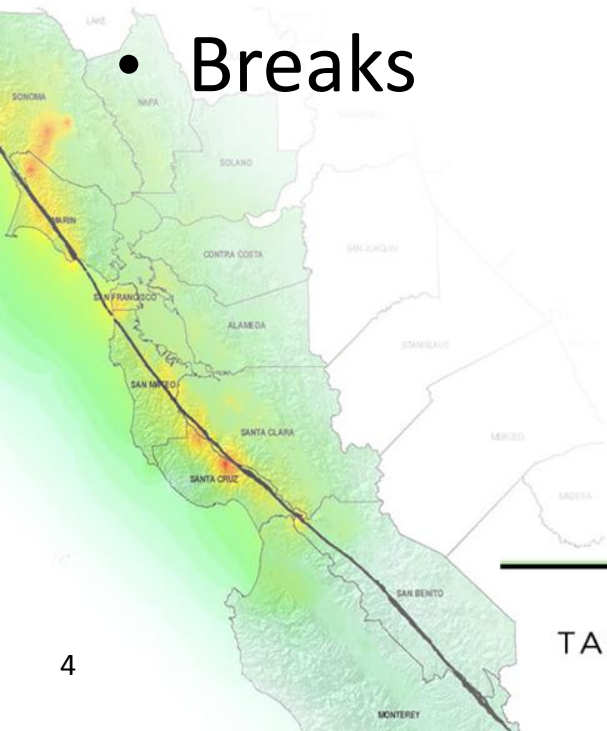


TABLETOP EXERCISE



# Housekeeping

- Restrooms
- Silence cell phones
- Emergencies
- Breaks

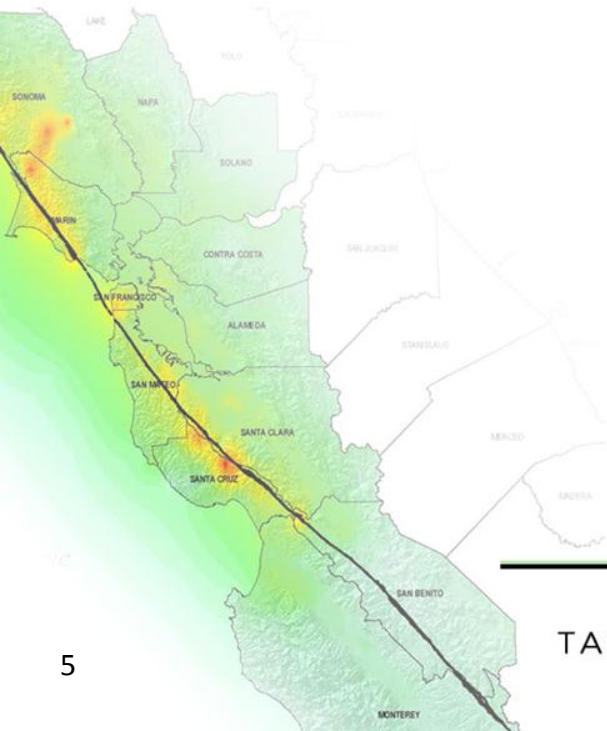


TABLETOP EXERCISE



# Introductions

- Bay Area UASI
- Facilitators
- Participants

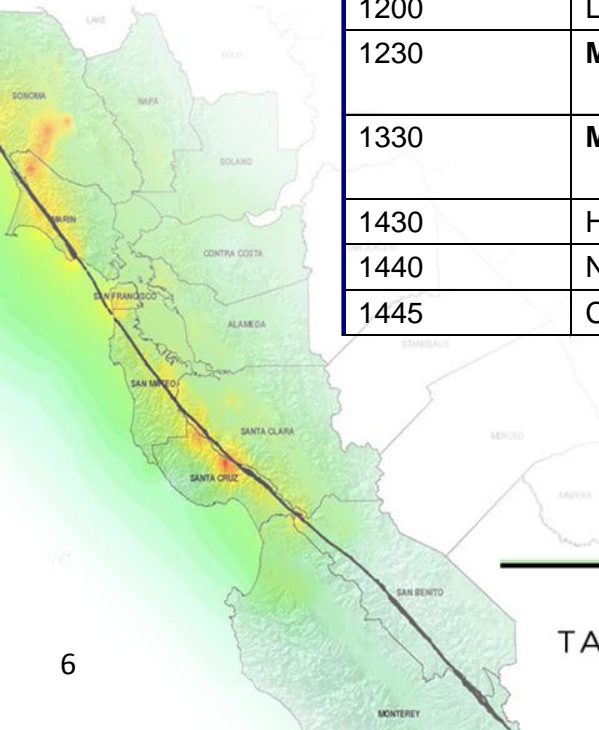


TABLETOP EXERCISE



# Agenda

Time	Activity
<b>Tuesday, August 6, 2013</b>	
0900	Registration
0930	Welcome and Opening Remarks
0935	Introductions
0945	Exercise Overview
1000	<b>Module 1: Comprehensive Plan Review</b>
1045	Break
1100	<b>Module 1: Comprehensive Plan Review (cont.)</b>
1200	Lunch Break
1230	<b>Module 2: Tabletop Discussion</b>
1330	<b>Module 2: Tabletop Discussion</b>
1430	Hot Wash
1440	Next Steps
1445	Closing Comments

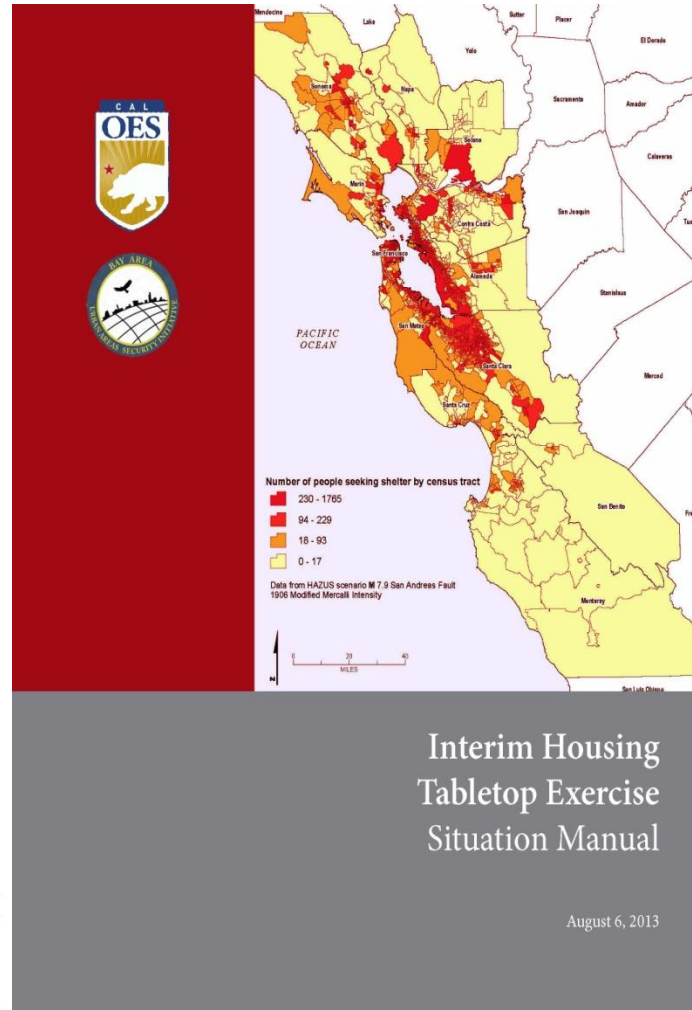
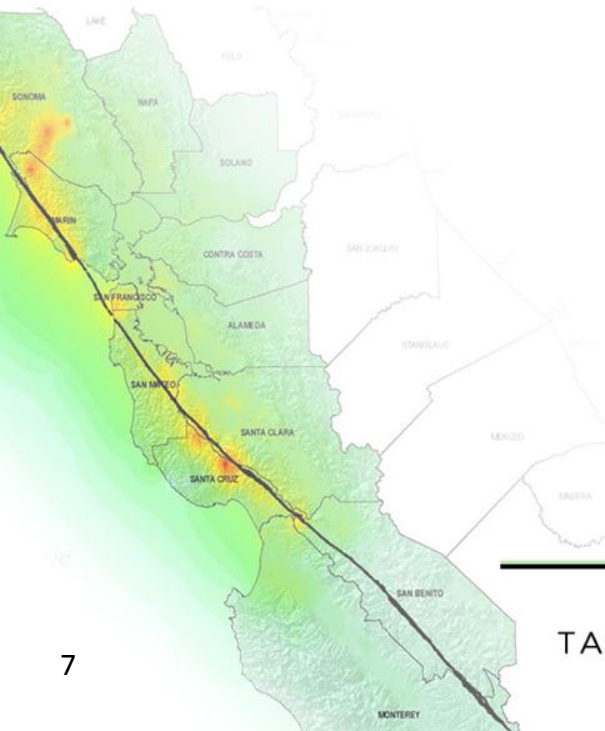


TABLETOP EXERCISE





# Situation Manual



## Interim Housing Tabletop Exercise Situation Manual

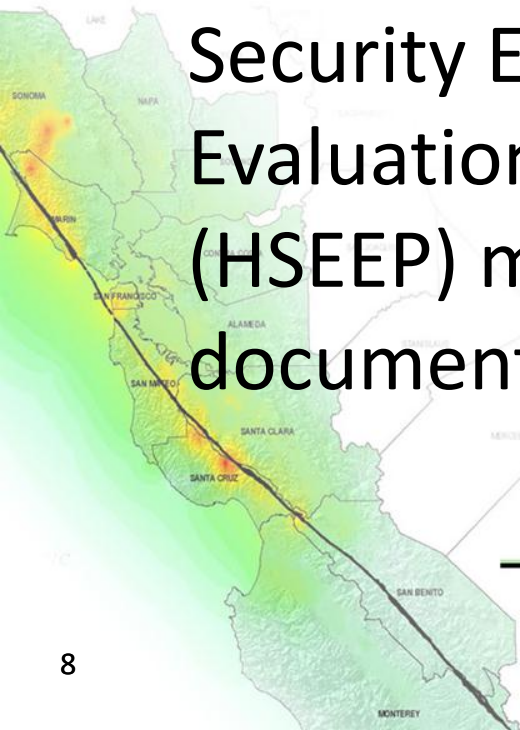
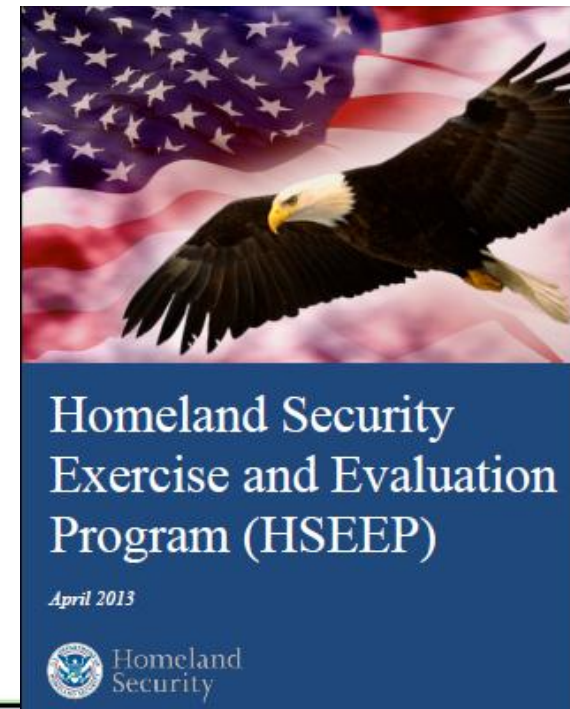
August 6, 2013

TABLETOP EXERCISE



# Exercise Scope

- This is a six-hour, discussion-based exercise
- The tabletop exercise follows the Homeland Security Exercise and Evaluation Program (HSEEP) methodology and documentation



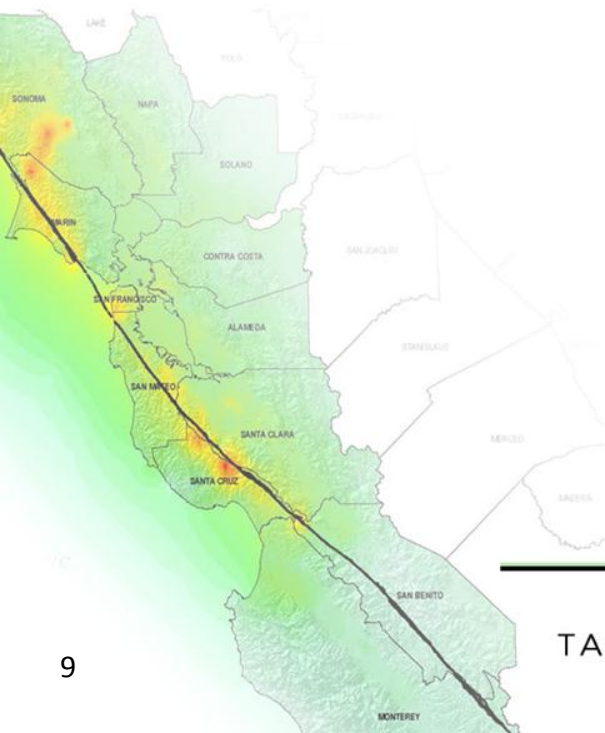
TABLETOP EXERCISE





# Exercise Purpose

- To review and vet the relationship of the *RCPGP Regional Catastrophic Interim Housing Plan* to the Federal, state, and local plans that address interim housing.

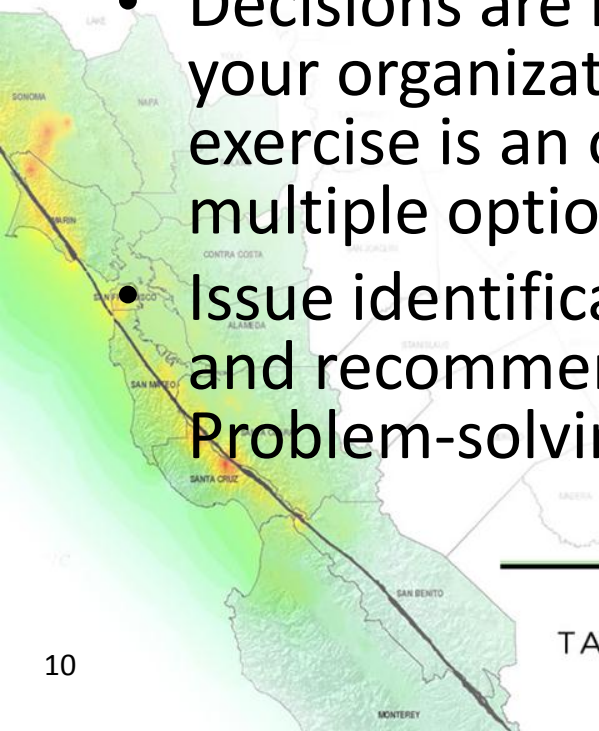


TABLETOP EXERCISE



# Exercise Guidelines

- This exercise will be held in an open, low-stress, no-fault environment. Varying viewpoints, even disagreements, are expected.
- Respond to the scenario using your knowledge of current plans and capabilities (i.e., you may use only existing assets) and insights derived from your training.
- Decisions are not precedent setting and may not reflect your organization's final position on a given issue. This exercise is an opportunity to discuss and present multiple options and possible solutions.
- Issue identification is not as valuable as suggestions and recommended actions that could response efforts. Problem-solving efforts should be the focus.

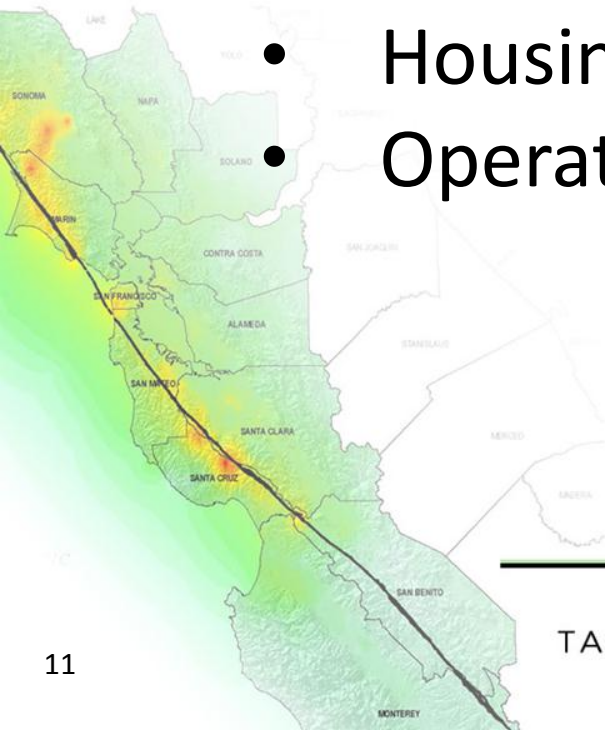


# Mission Areas

- Response
- Recovery

# Core Capabilities

- Housing
- Operational Coordination



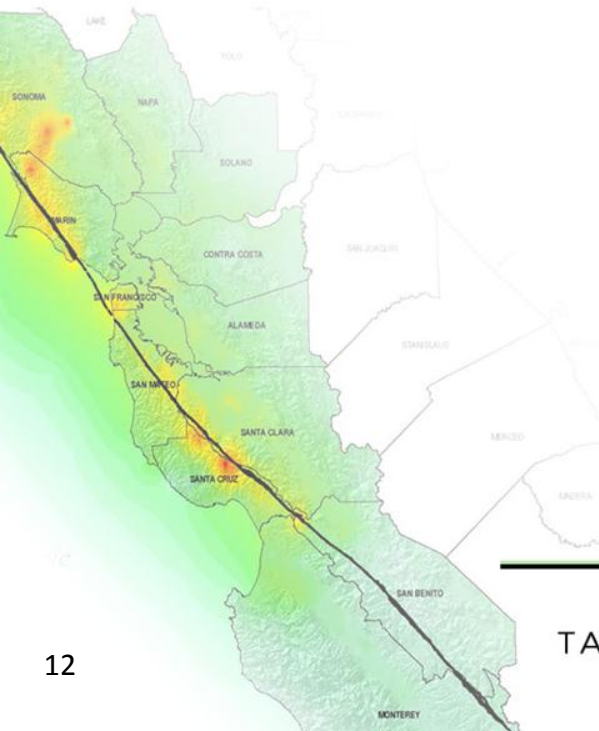
TABLETOP EXERCISE



# Overarching Exercise Objectives

Review the Plan to vet and align Federal, State, and local government--

- Roles & Responsibilities, and
- Notification & Activation Procedures

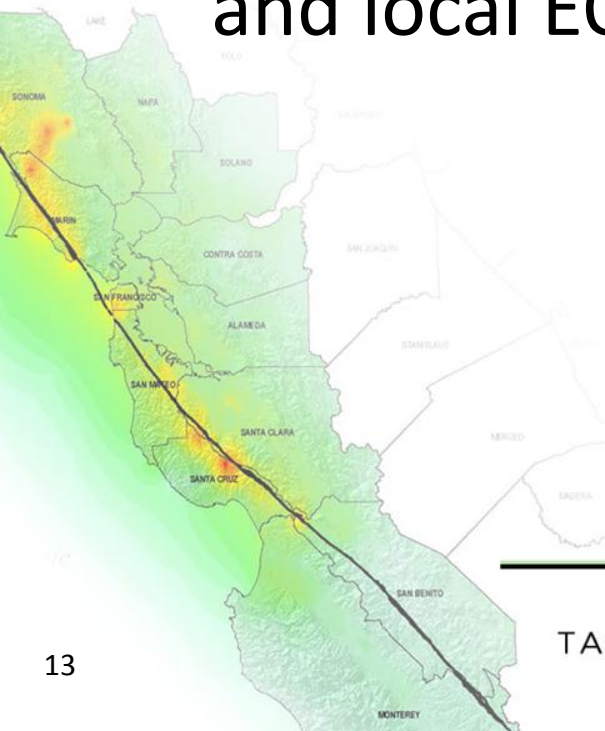


TABLETOP EXERCISE



# Overarching Objectives (cont'd)

- Discuss critical elements identified during Golden Guardian 2013
- Identify gaps, develop recommendations for adoption of RCPGP Plans as Annexes to RECP and local EOPs



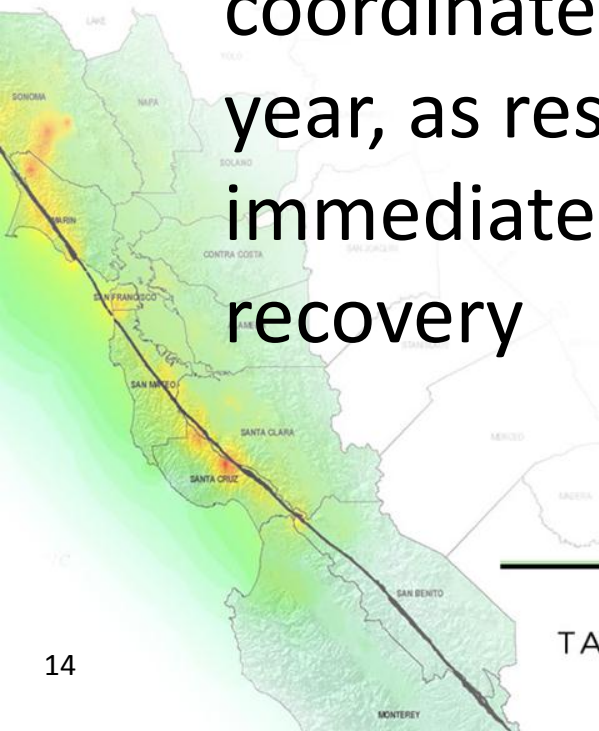
TABLETOP EXERCISE



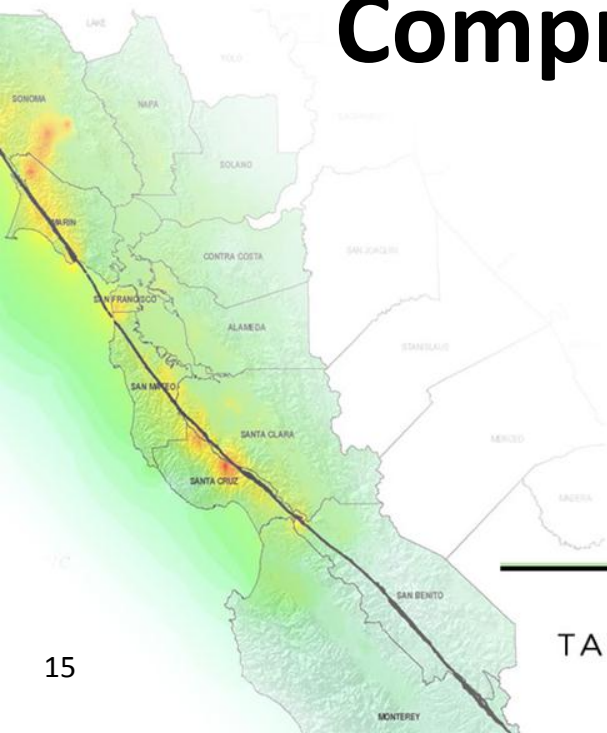


# Objectives for this Exercise

1. Review the roles and responsibilities of critical agencies and organizations identified in the RCPGP Interim Housing Plan.
2. Describe how interim housing activities are coordinated from initial activation to one year, as response shifts from meeting immediate needs to supporting long-term recovery



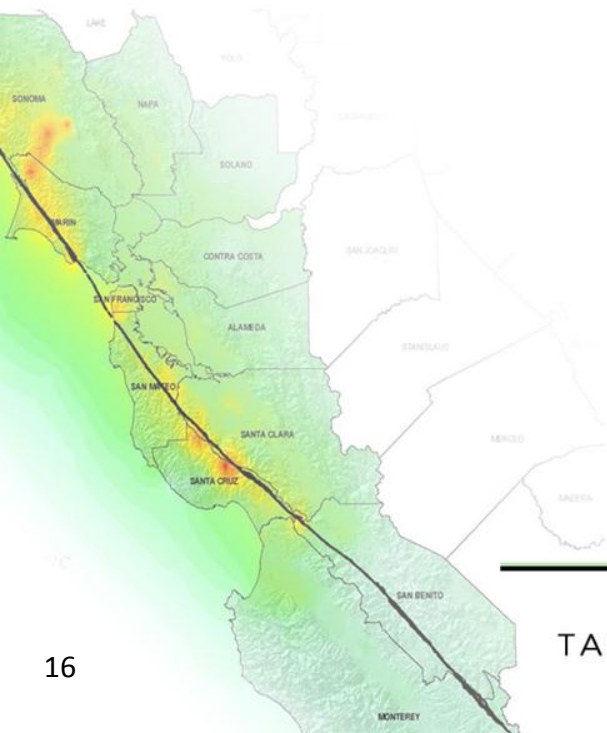
# Module 1: Comprehensive Plan Review



TABLETOP EXERCISE



# Plan Relationships

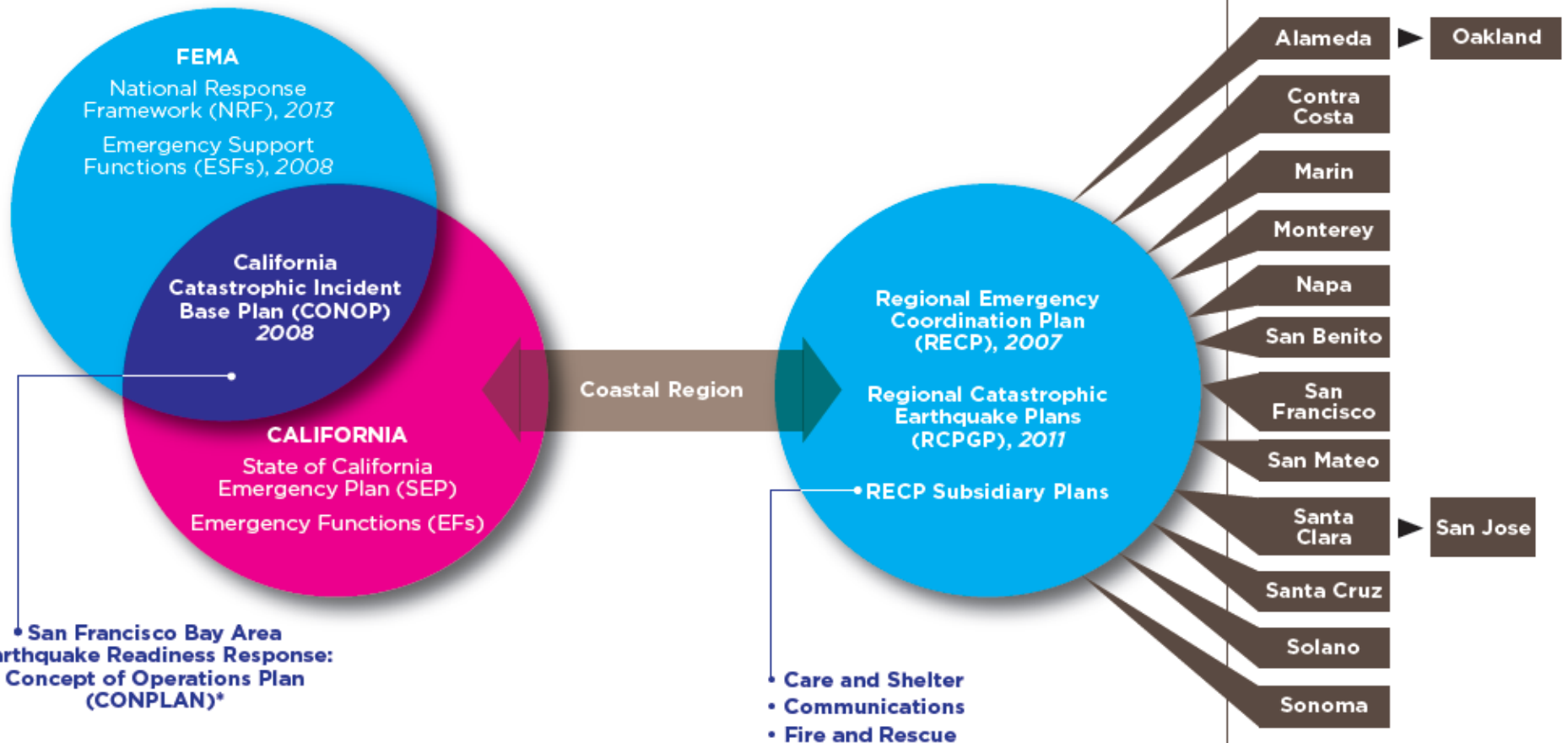


TABLETOP EXERCISE



# Emergency Plan Relationships

Federal ▶ State ▶ Region ▶ Operational Areas ▶ Local Governments



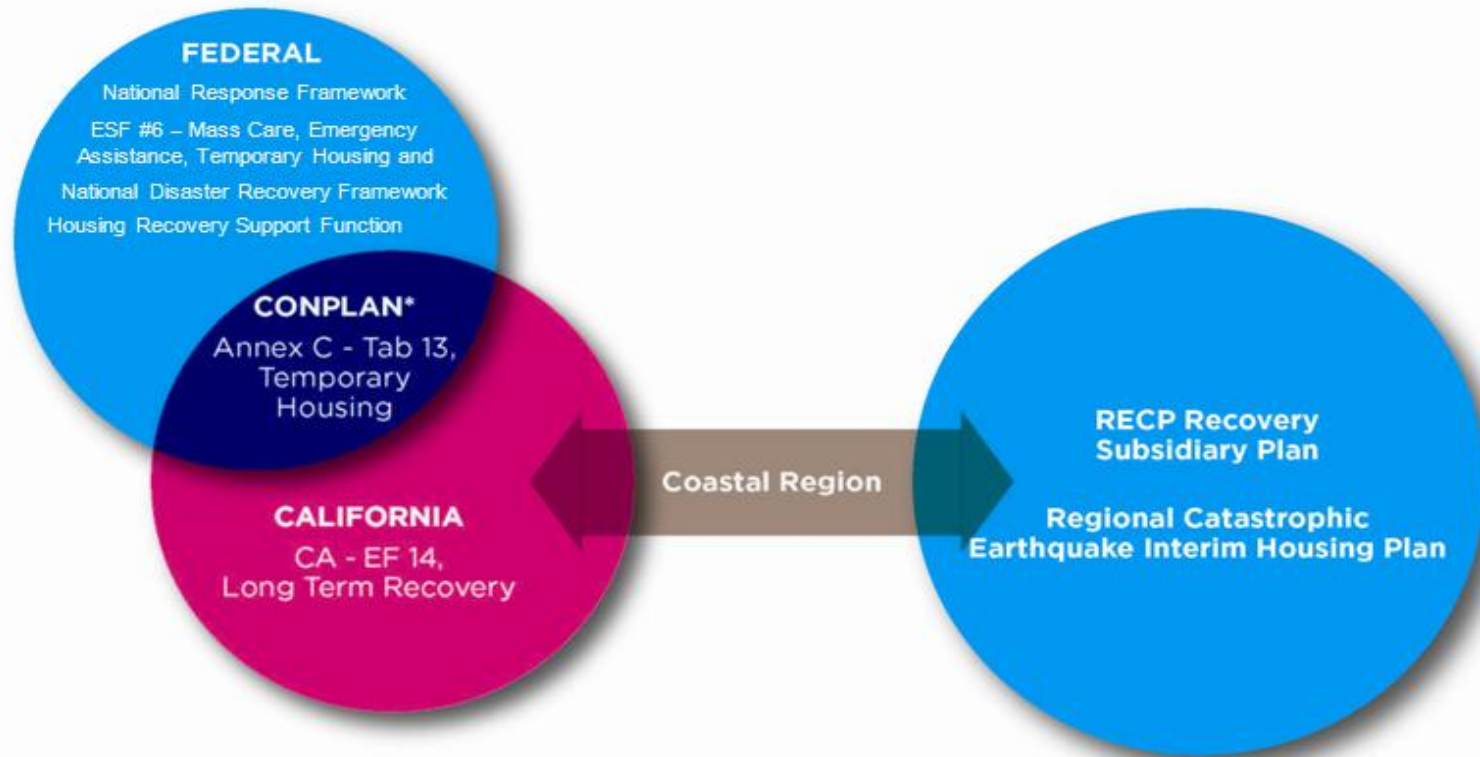
• **San Francisco Bay Area Earthquake Readiness Response: Concept of Operations Plan (CONPLAN)\***

\*Only applies to Coastal Region, specifically the San Francisco Bay Area counties of: Alameda, Contra Costa, Marin, Napa, San Francisco, San Mateo, Santa Clara, Santa Cruz, Solano, and Sonoma.

- **Care and Shelter**
- **Communications**
- **Fire and Rescue**
- **Hazardous Material**
- **Law Enforcement and Coroner/Medical Examiner**
- **Logistics**
- **Medical and Health**
- **Recovery**
- **Transportation**

# Interim Housing Plan Relationships

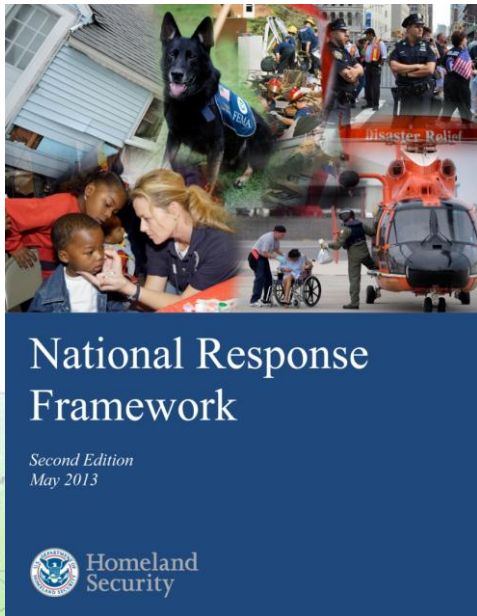
Federal ► State ► Region ► Operational Areas ► Local Governments



\* Other than Marin County it is unknown or assumed that the other San Francisco Bay Area Operational Area and Core Cities lack plans that specifically address Interim Housing.



# National Response Framework (2008) and (2013)



- Guidance for national response to all types of disasters and emergencies
- Built on NIMS to be scalable, flexible, and adaptable.
- Incorporates “Whole Community” preparedness concept into 2013 version
- One of five planning mission area frameworks: Prevention, Protection, Mitigation, Response, and Recovery

<http://www.fema.gov/library/viewRecord.do?id=7371>

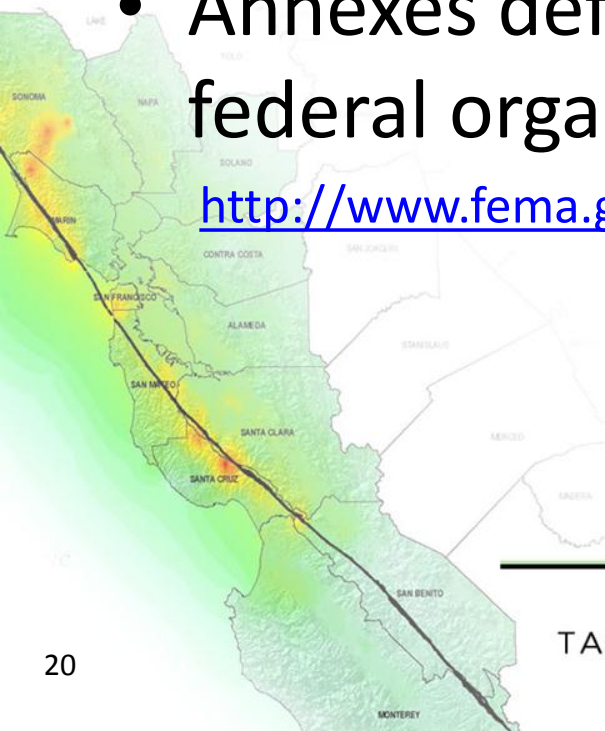
TABLETOP EXERCISE



# Emergency Support Function (ESF) Annexes

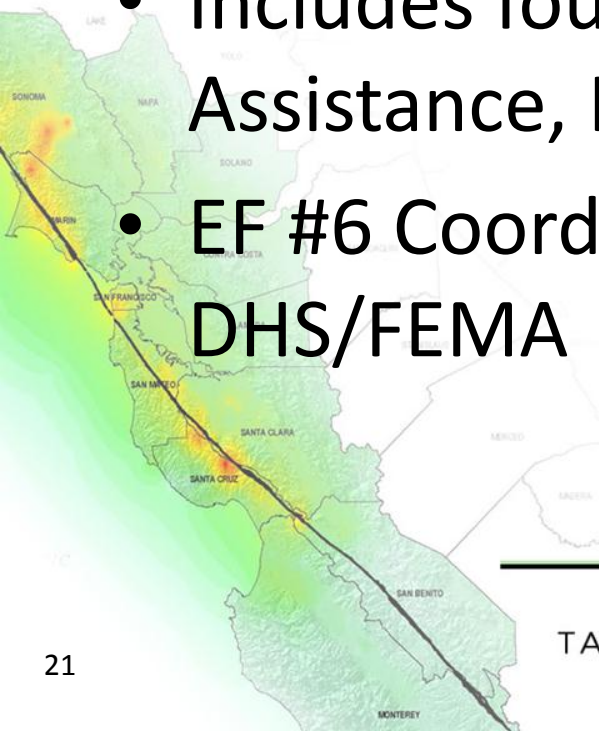
- 15 annexes to the NRF that describe the capabilities of federal departments and agencies and other national-level assets by function
- Annexes define primary and supporting federal organizations and responsibilities

<http://www.fema.gov/national-preparedness-resource-library>



# ESF #6– Mass Care, Emergency Assistance, Housing, and Human Services

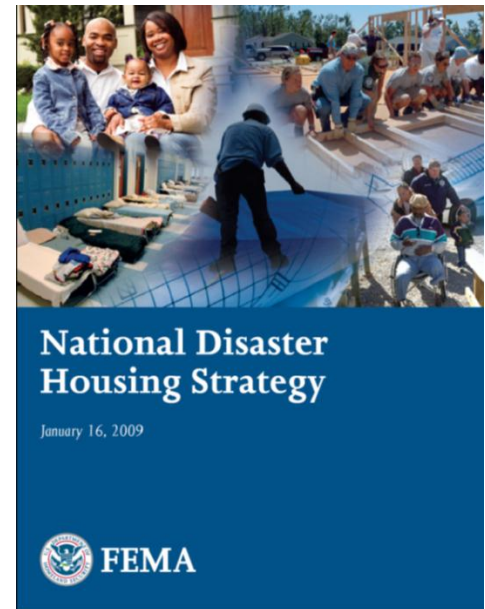
- Defines programs implemented to assist individuals and households affected by potential or actual disaster incidents
- Includes four functions: Mass Care, Emergency Assistance, Housing, and Human Services
- EF #6 Coordinator and Primary Agency is DHS/FEMA



# National Disaster Housing Strategy (NDHS) (2009)

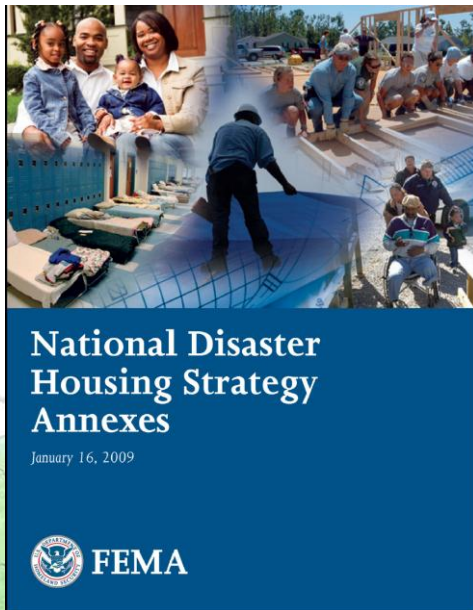
- Developed in response to lessons learned from Hurricane Katrina
- Intended to chart a new direction for disaster housing efforts by engaging all levels of government and the nonprofit and private sectors
- Built on six national goals
- Consists of a foundation document and seven annexes

<http://www.fema.gov/national-disaster-housing-strategy-resource-center>





# NDHS Annexes

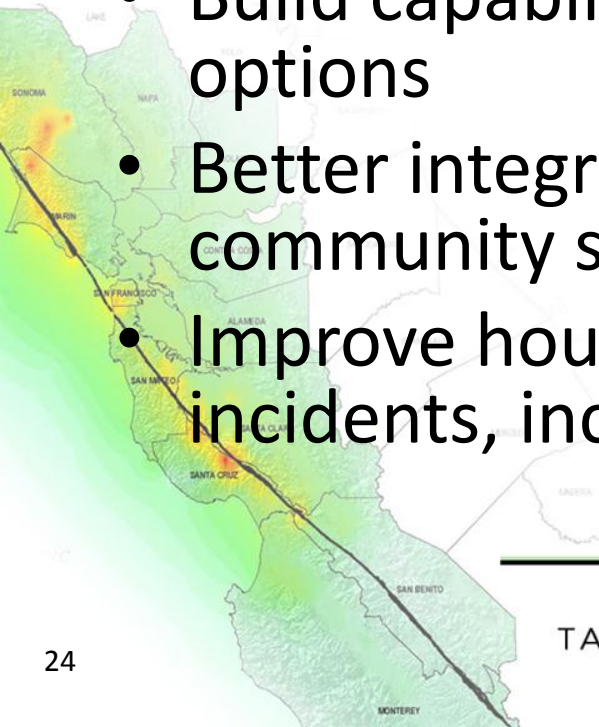


- Disaster Housing Programs
- Methods to House Disaster Victims
- Programs for Special Needs and Low Income Populations
- Disaster Housing Group Site Operations
- Programs to Promote the Repair or Rehabilitation of Rental Housing
- Additional Authorities Necessary to Carry Out the Strategy
- Disaster Housing Assistance Available under the Stafford Act



# NDHS Goals

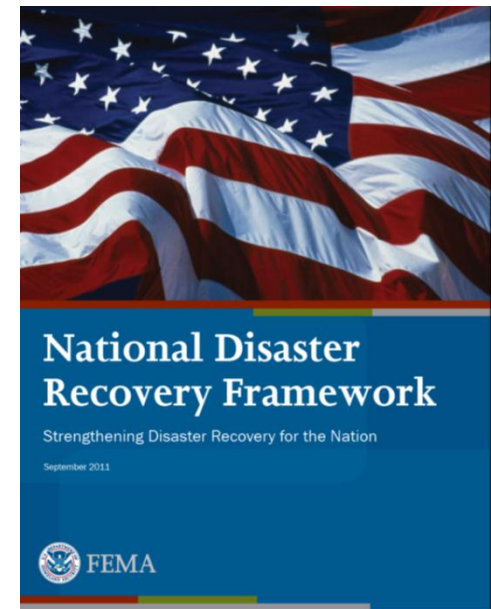
- Provide support as quickly as possible;
- Affirm and fulfill fundamental housing responsibilities and roles
- Increase understanding and ability to meet survivor needs
- Build capabilities to provide broad range of options
- Better integrate housing assistance with related community support services
- Improve housing planning to better recover from incidents, including catastrophic incidents



# National Disaster Recovery Framework (2011)

- Enables effective recovery support to disaster-affected states, tribes, territorial, and local jurisdictions
- Establishes coordination structures, defines leadership roles and responsibilities, and guides coordination and recovery planning at all levels of government before a disaster happens

<http://www.fema.gov/media-library/assets/documents/24647?fromSearch=fromsearch&id=5124>



# Recovery Support Functions (RSFs)

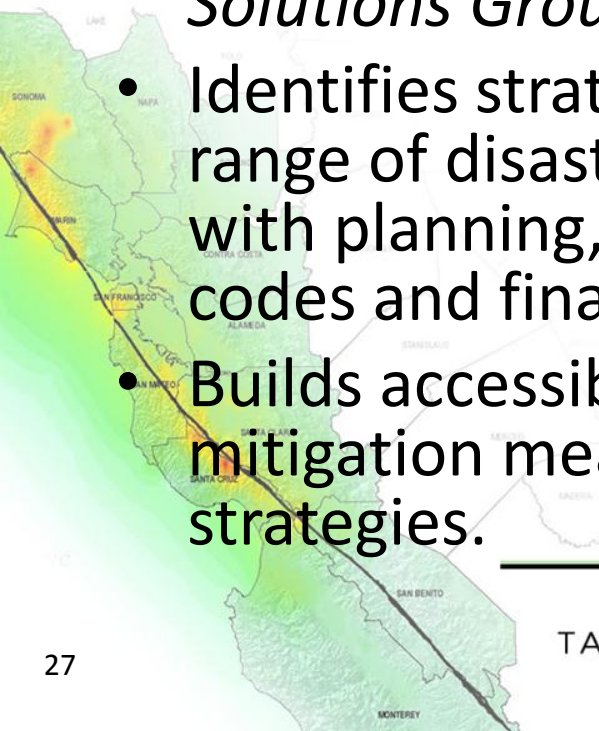
- Six RSFs comprise the *NDRF's* coordinating structure for key functional areas of assistance.
- RSFs support local governments by facilitating problem solving, improving access to resources and by fostering coordination among state and Federal agencies, nongovernmental partners and stakeholders.

<http://www.fema.gov/recovery-support-functions>

# Housing Recovery Support Function

## Pre-disaster roles and responsibilities:

- HUD is Coordinating Agency and DHS/FEMA, HUD, DOJ, USDA are Primary Agencies
- Works with local, State and Tribal governments, organizations and others in coordination with the *National Disaster Housing Task Force, Joint Housing Solutions Group*.
- Identifies strategies and options that address a broad range of disaster housing issues such as those dealing with planning, zoning, design, production, logistics, codes and financing.
- Builds accessibility, resilience, sustainability and mitigation measures into identified housing recovery strategies.



# HRSF (cont'd)

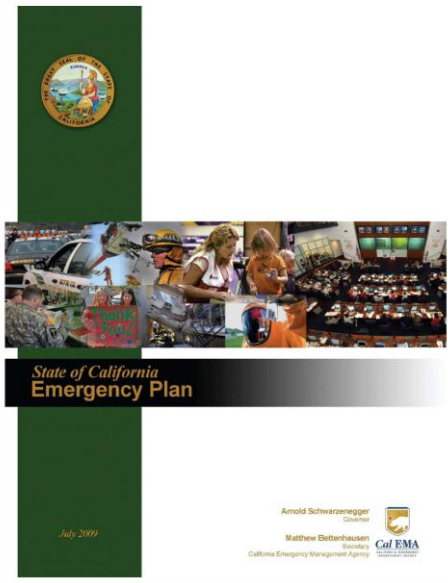
## Post-disaster roles and responsibilities:

- Coordinates and leverages Federal housing-related resources to assist local, State and Tribal governments to address housing-related, disaster recovery needs.
- Encourages rapid and appropriate decisions regarding land use and housing location in the community or region.
- Identifies gaps and coordinates a resolution of conflicting policy and program issues.
- Maintains robust and accessible communications throughout the recovery process between the Federal Government and all other partners to ensure ongoing dialogue and information sharing.





# State of California Emergency Plan (SEP) [2009]



- Provides the overall framework for state, federal, local, and tribal governments, and the private sector to work together to mitigate against, prepare for, respond to, and recover from the effects of emergencies and disasters
- Conforms to requirements of Emergency Services Act, SEMS, NIMS, and the NRF

<http://www.calema.ca.gov/PlanningandPreparedness/Pages/State-Emergency-Plan.aspx>



# California Emergency Function (EF) Annexes (2013)

- SEP established 18 CA-EFs and lead agencies for each
- Each CA-EF represents an alliance of public and private sector stakeholders who possess common interests and share responsibilities for emergency management functions
- Intended to operate across the five mission areas: Prevention, Protection, Mitigation, Response, and Recovery and emergency management phases

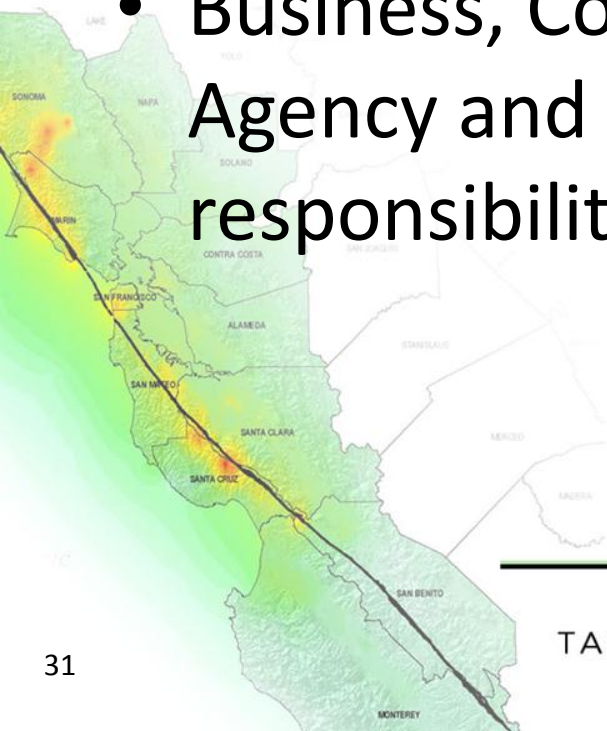
<http://www.calema.ca.gov/PlanningandPreparedness/Pages/Emergency-Functions.aspx>

TABLETOP EXERCISE



# CA-EF 14: Long-term Recovery

- Provides support and economic recovery for communities in California from the long-term consequences of extraordinary emergencies and disaster an includes interim housing
- Business, Consumer Services and Housing Agency and Cal OES (?) share lead agency responsibilities



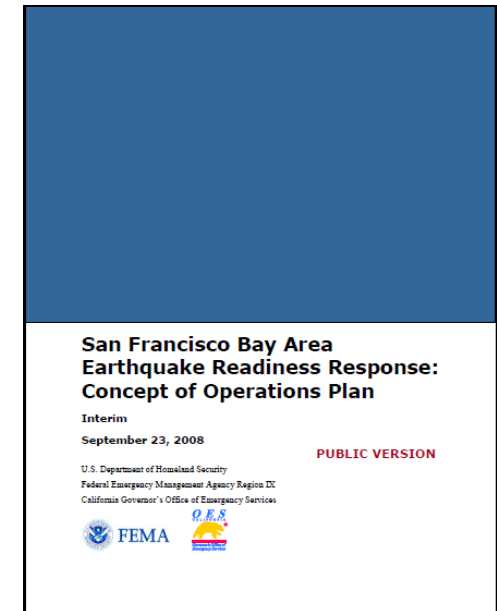
TABLETOP EXERCISE



# SF Bay Area Earthquake Readiness Response: Concept of Operations Plan (2008)

- Describes the joint response of the state and federal governments to a **M 7.9** earthquake on the San Andreas Fault in the Bay Area
- Does not describe the specific response efforts of these entities, but does describe the resources that will be deployed by the federal government

<http://www.calema.ca.gov/PlanningandPreparedness/Pages/Catastrophic-Planning.aspx>

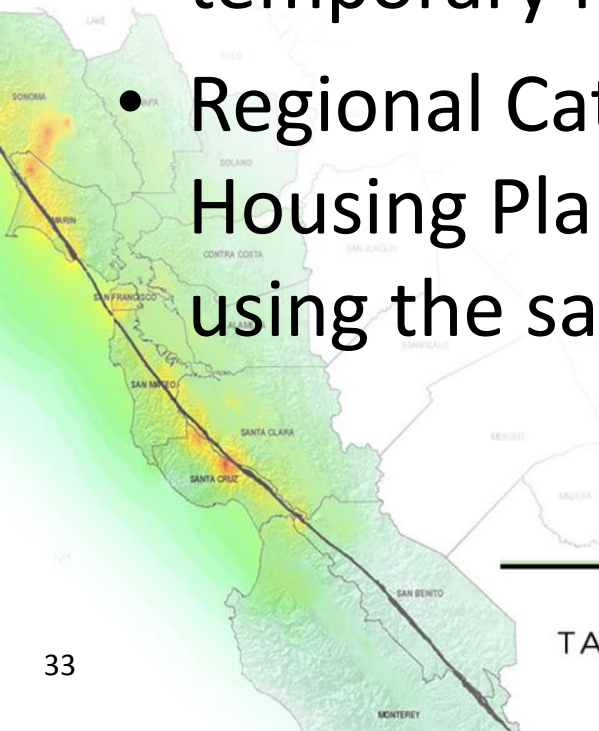


TABLETOP EXERCISE

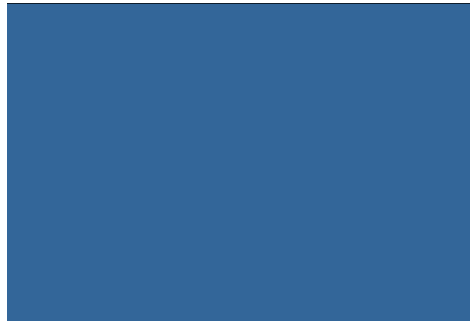


# CONPLAN Annex C- Tab 13, Temporary Housing

- Defines general assumptions, roles and responsibilities, a concept of operations, and a response timeline of activities related to temporary housing
- Regional Catastrophic Earthquake Interim Housing Plan offers an expanded housing plan using the same scenario



# California Catastrophic Incident Base Plan: Concept of Operations (CONOP) [2008]

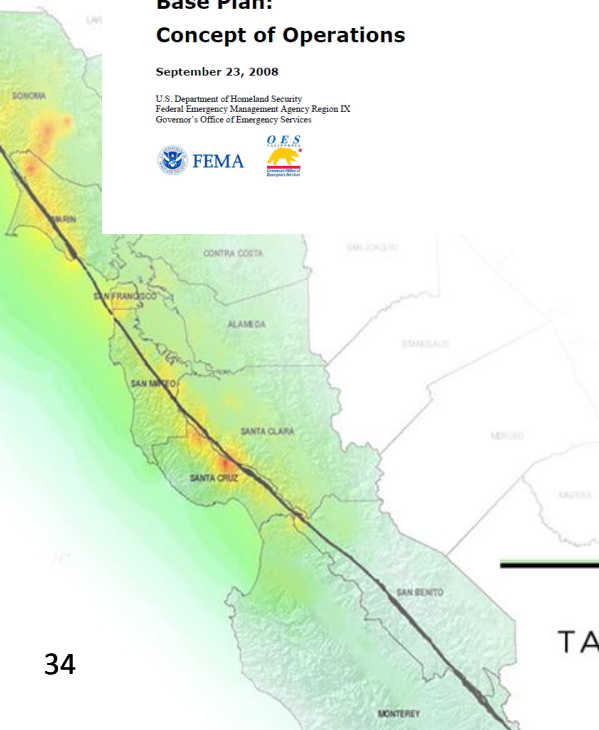


## California Catastrophic Incident Base Plan:

### Concept of Operations

September 23, 2008

U.S. Department of Homeland Security  
Federal Emergency Management Agency Region IX  
Governor's Office of Emergency Services



- Establishes a concept of operations for the joint federal-state response to, and recovery from a catastrophic incident in California
- Identifies the joint state/federal organization and operational framework that supports affected Operational Areas and local governments in the incident area

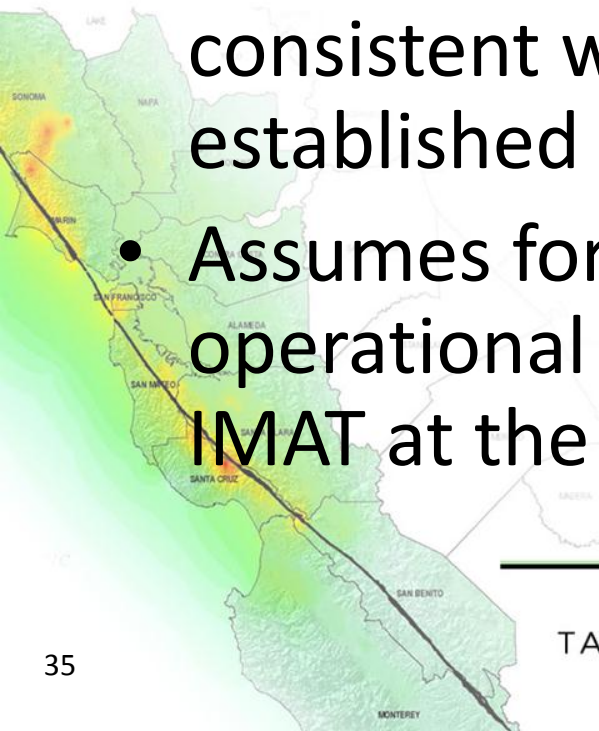
<http://www.calema.ca.gov/PlanningandPreparedness/Pages/Catastrophic-Planning.aspx>

TABLETOP EXERCISE



# CONOP (cont'd)

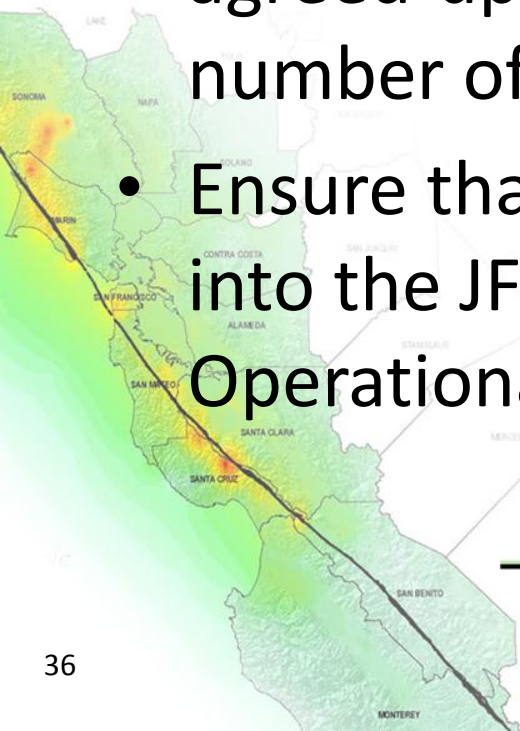
- Describes integration of federal resources into state-led response to a catastrophic incident to achieve unity of effort
- Does not change the fact that all requests for federal assistance be made through the state consistent with protocols and procedures established under SEMS
- Assumes formation of UCG to consolidate operational elements of the REOC, SOC, and IMAT at the JFO





# Unified Coordination Group Objectives

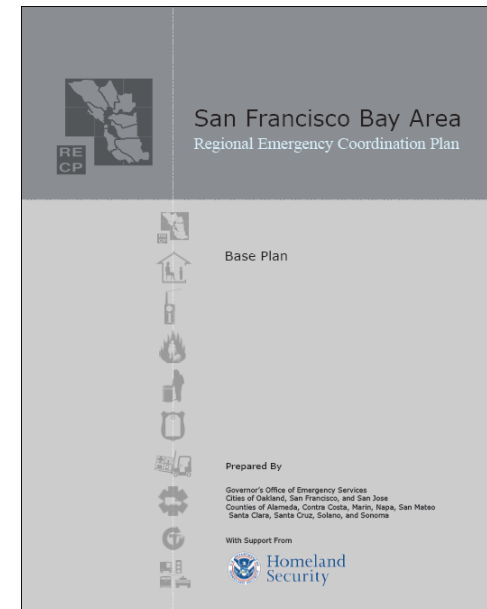
- Provide leadership for agencies to work together with common objectives to ensure that the management of the incident response is effective
- Ensure that all decisions are based on mutually agreed-upon objectives, regardless of the number of agencies or jurisdictions involved
- Ensure that regional and state-level functions are into the JFO in a manner transparent to local and Operational-level authorities



# Regional Emergency Coordination Plan (RECP) [2007]

- Provides all-hazards framework for collaboration and coordination among responsible entities
- Defines procedures for regional coordination, collaboration, decision-making, and resource sharing
- Describes the formation of and roles and responsibilities of a Regional Coordination Group (RCG)
- Authorizes creation of Task Forces
- Consists of Base Plan and nine Subsidiary Plans

<http://www.calema.ca.gov/RegionalOperations/Pages/Plans-for-Coastal-Region.aspx>

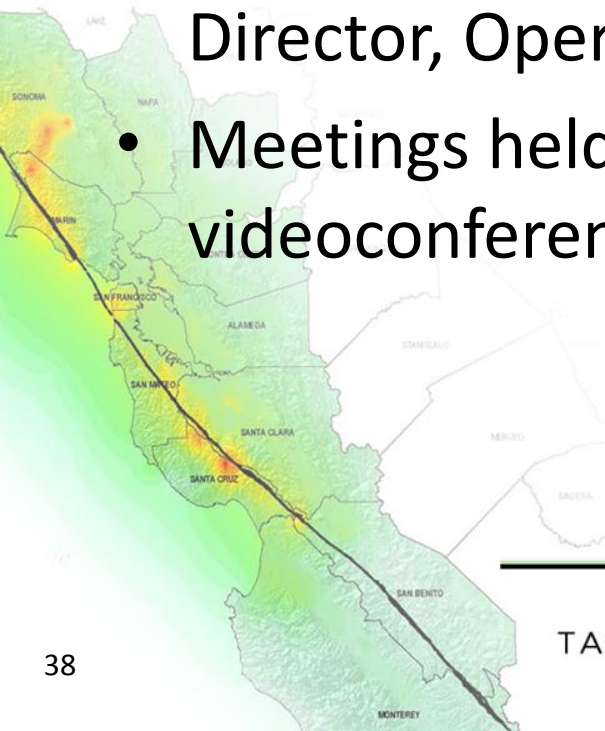


TABLETOP EXERCISE



# RCG – General Description

- May be convened by REOC Director to provide guidance on decisions regarding the allocation of resources and coordination of response activities
- Consists of relevant Branch Coordinators of the REOC Operations Section, Operations Section Chief, REOC Director, Operational Area representatives, and SMEs
- Meetings held by conference call or videoconferencing

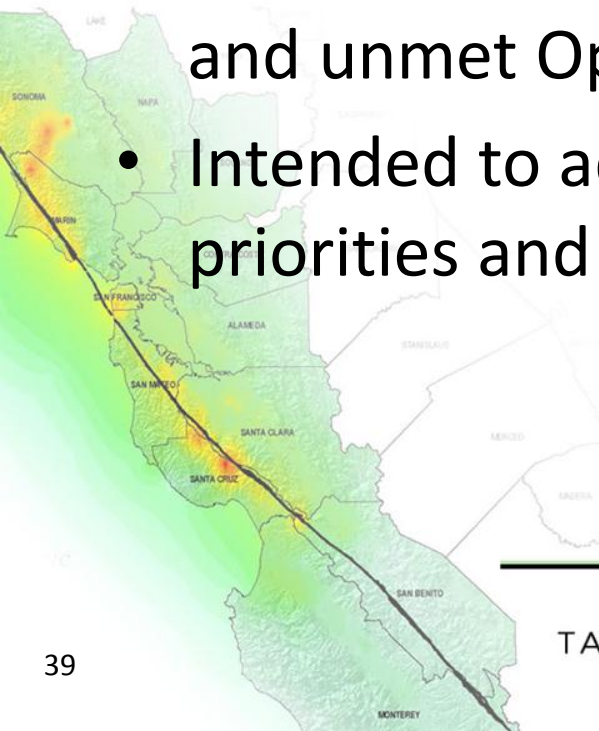


TABLETOP EXERCISE



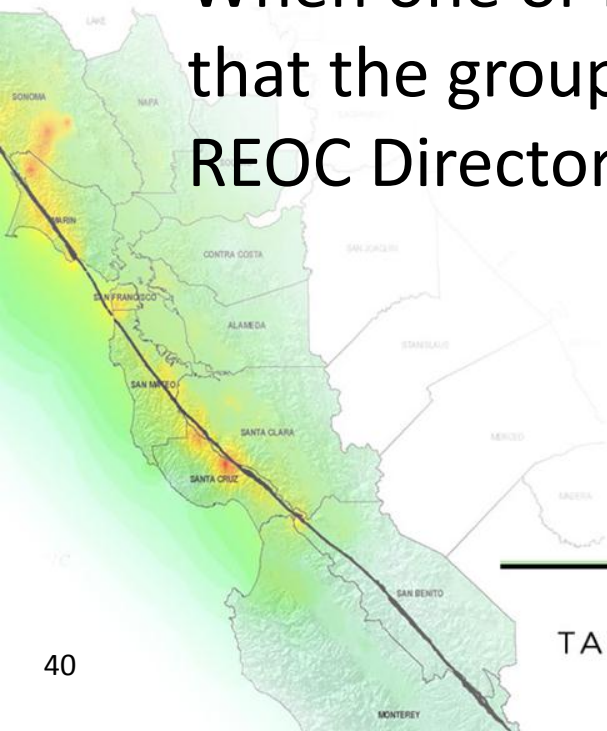
# RCG – Purpose

- Allows the REOC Director to initiate a dialogue with Operational Area EOC Directors
- Gives Operational Areas opportunity to provide input for important decisions
- Focuses on allocation of resources, key decisions, and unmet Operational Area priorities
- Intended to address specific local government priorities and resource gaps



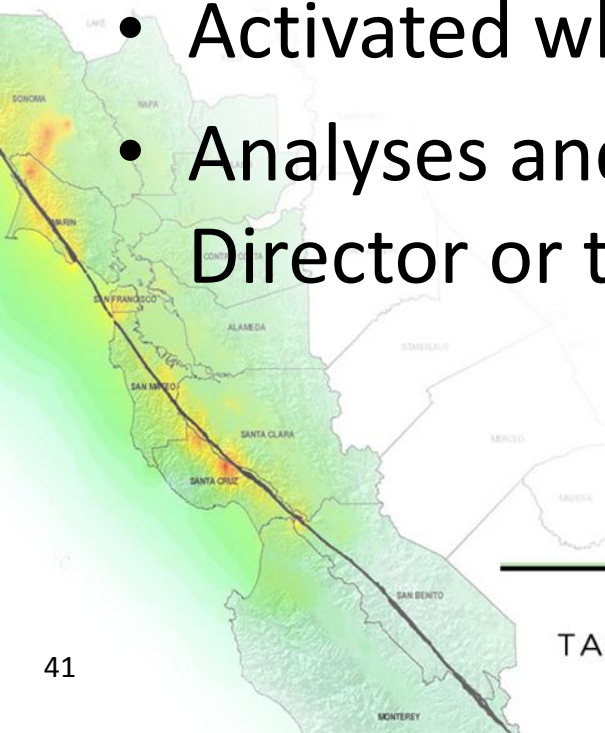
# RCG – Coordination Calls

- Usually at the initiation of response operations to establish contact with Op Area EOC Directors
- When necessary to focus on a specific topic
- When situation dictates regular contact
- When one or more Op Area EOC Directors requests that the group be convened (subject to approval by REOC Director or designee)



# Regional Task Forces

- Convened by REOC Director to address complex, multi-disciplinary issues
- Composed of local, state, federal, and NGO representatives
- Activated when immediate solutions required
- Analyses and recommendations go to REOC Director or to the RCG





# RECP Subsidiary Plans

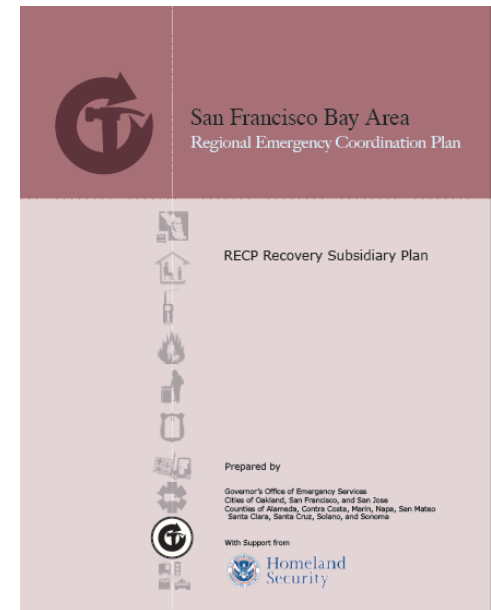
- Support the RECP Base Plan by providing function specific frameworks for coordination among the Coastal Region REOC, Coastal Region Operational Area EOCs, and the State Operations Center
- Provide an overview of the roles and responsibilities of agencies responsible for specific functional activities and specific guidance for the REOC in the event of a regional emergency

<http://www.calema.ca.gov/RegionalOperations/Pages/Plans-for-Coastal-Region.aspx>



# Recovery Subsidiary Plan

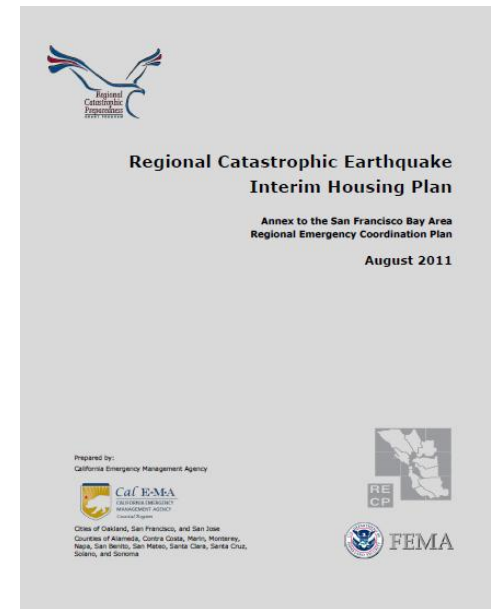
- Applies to 90-day period following a disaster
- Describes the transition from response to recovery operations
- Establishes a Regional Recovery Task Force (RRTF)– led by a Governor-appointed chairperson)
  - RRTF can create Working Groups
- Plans address specific recovery issues, including housing



# Regional Catastrophic Earthquake Interim Housing Plan (2011)

- Scenario-driven, function-specific operations plan for interim housing and related aspects of long-term recovery after a catastrophic earthquake
- Plan addresses catastrophic housing impacts, planning assumptions, agency roles and responsibilities, interim housing resources, recommended priorities and time-based objectives, and establishes a response timeline

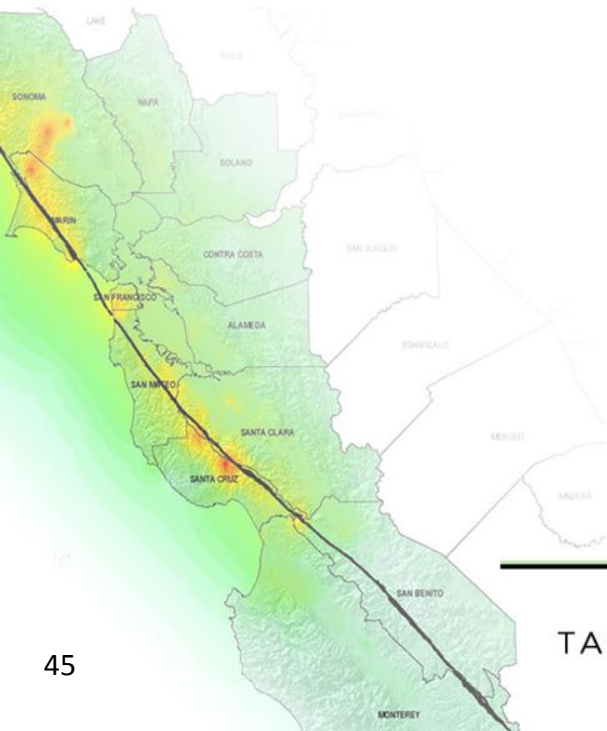
[www.bayareauasi.org/resources/plans-reports?page=2](http://www.bayareauasi.org/resources/plans-reports?page=2)<http://>



TABLETOP EXERCISE



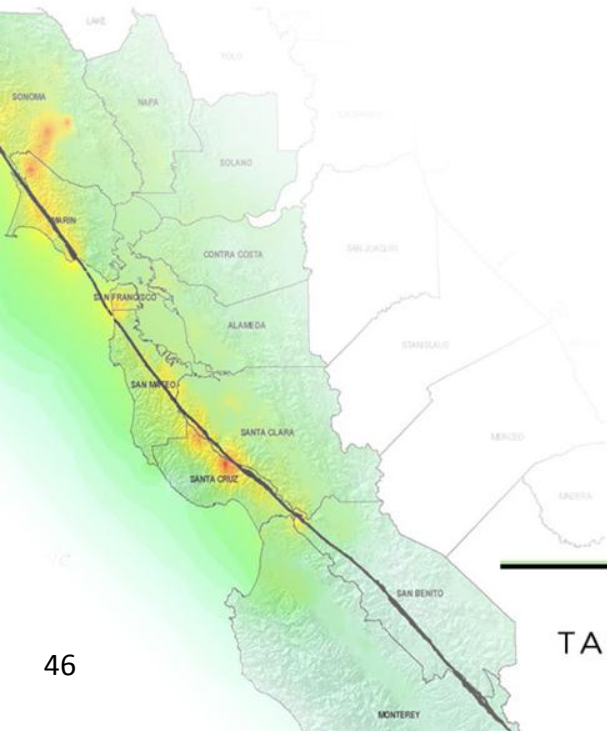
# BREAK – 15 Minutes



TABLETOP EXERCISE



# RCPGP Catastrophic Earthquake Interim Housing Plan

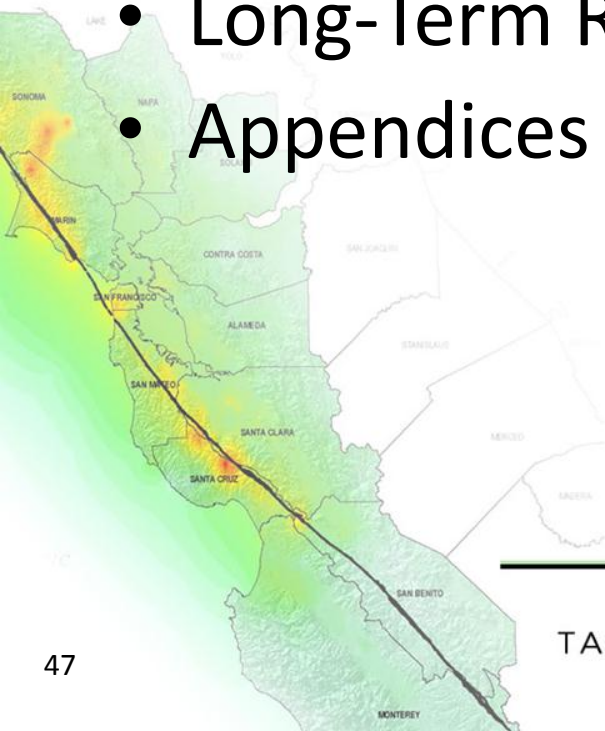


TABLETOP EXERCISE



# Plan Overview

- Scenario
- Key Assumptions
- Roles and Responsibilities
- Operational Priorities, Objectives, and Tasks
- Long-Term Recovery
- Appendices



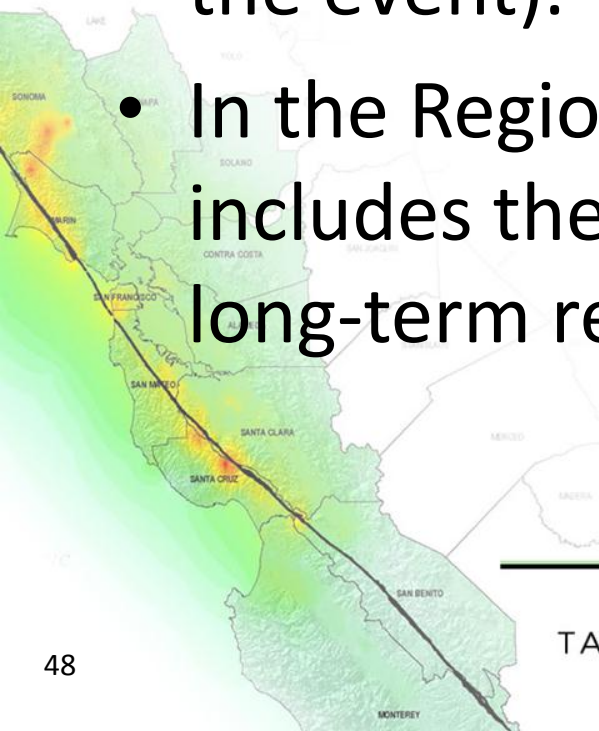
TABLETOP EXERCISE





# Definitions

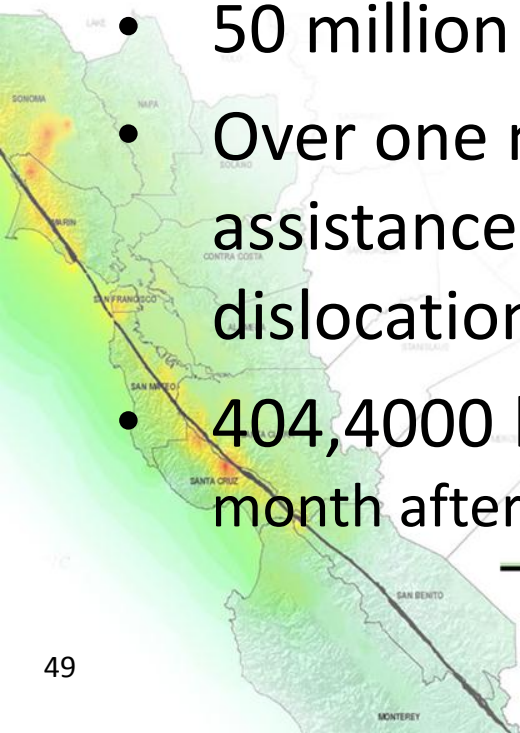
- **Interim housing.** Housing assistance between sheltering and the return of disaster victims to permanent housing. Generally, this period is from E to E+1 year (and up to 18 months after the event).
- In the Regional Interim Housing Plan, it also includes the early steps in the transition to long-term recovery.



# Regional Plan Scenario

## Catastrophic EQ: M7.9, San Andreas Fault

- 500,000 households without electricity
- 1.8 million households without potable water
- 7,000 fatalities
- 50 million tons of debris
- Over one million people requiring transportation assistance because of hazardous conditions or dislocation
- 404,4000 households needing interim housing (1 month after the earthquake)



**Table 1.** Estimated number of households in the region that will need interim housing 1 month after the earthquake.

**Number of Households in the Region  
Needing Interim Housing**

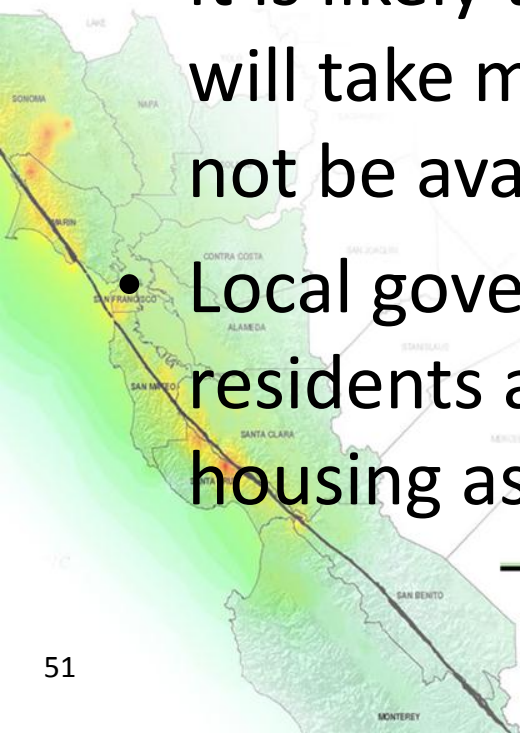
<b>County</b>	<b>E+1 Month</b>
Alameda	95,400
Contra Costa	17,500
Marin	8,000
Monterey	2,300
Napa	3,500
San Benito	300
San Francisco	116,800
San Mateo	41,700
Santa Clara	97,300
Santa Cruz	3,600
Solano	3,400
Sonoma	14,600
<b>Total</b>	<b>404,400</b>

Source: URS analysis of HAZUS damage estimates  
E = scenario event



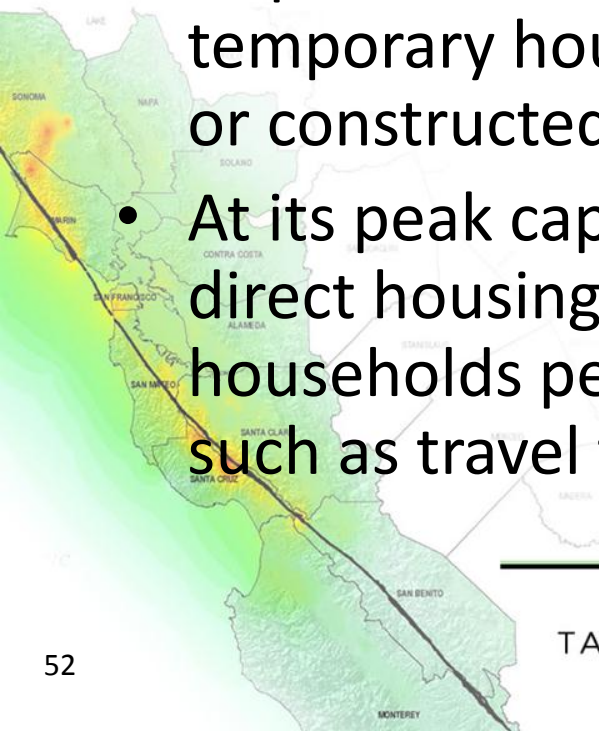
# Key Assumptions

- The number of households requiring interim housing may be underestimated if the recovery period for critical sewer, water, and energy services takes longer than a few months.
- It is likely that the restoration of some structures will take more than five years, and resources will not be available to restore all damaged units.
- Local governments want to relocate as few residents as possible while providing interim housing as quickly as possible.



# Key Assumptions (cont'd)

- Access to schools, health care, grocery stores, social support networks, accessibility, and other amenities affect decisions about interim housing.
- Because of the lack of available rental housing in the Bay Area region, tens of thousands of households may require rental housing outside of the Bay Area, and temporary housing units may need to be brought into or constructed in the region.
- At its peak capacity, FEMA has been able to provide direct housing support for more than 10,000 households per month using temporary housing units such as travel trailers and mobile homes.



# Key Assumptions

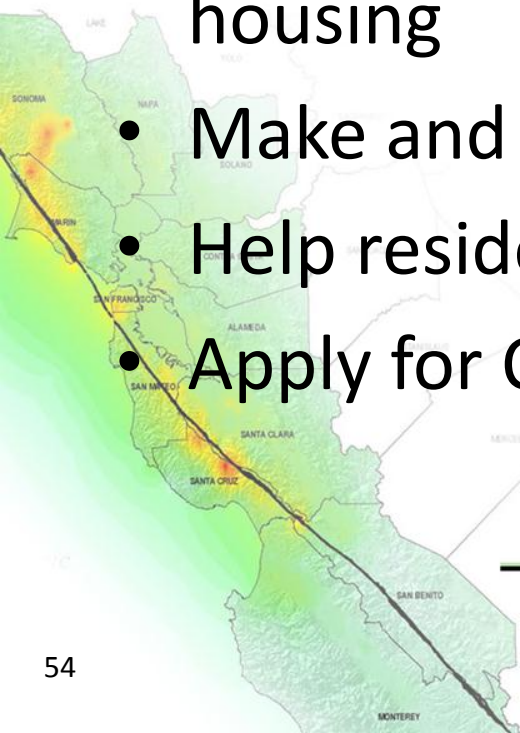
*The complete list of assumptions for the plan are in your manual. Please review them and submit written comments to URS after the conclusion of today's workshop.*



# Roles and Responsibilities

## Local Government

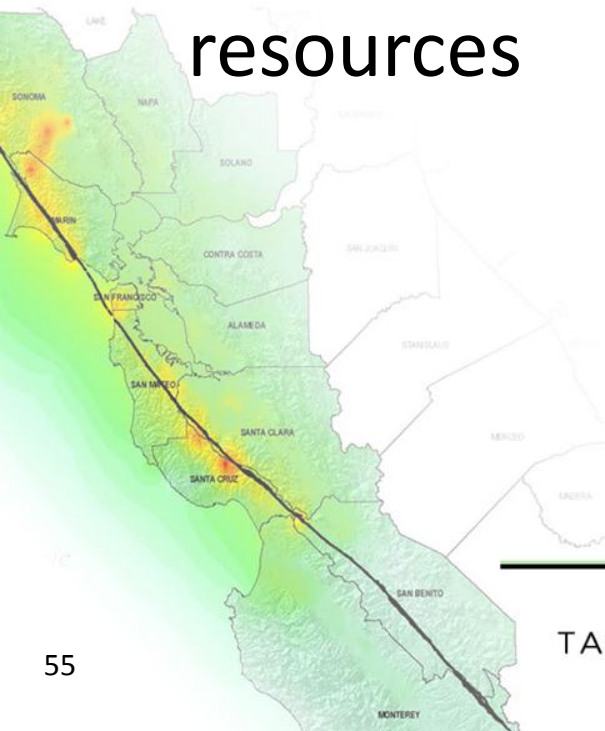
- Establish LACs
- Inspect and prioritize
- Modify local ordinances about zoning for interim housing
- Make and implement long-term recovery plans
- Help residents apply for Federal assistance
- Apply for Community Development Block Grants



# Roles and Responsibilities

## Operational Area

- Establish housing task forces
- Participate in the SCHTF
- Play a coordinating role in requesting resources



TABLETOP EXERCISE



# Roles and Responsibilities

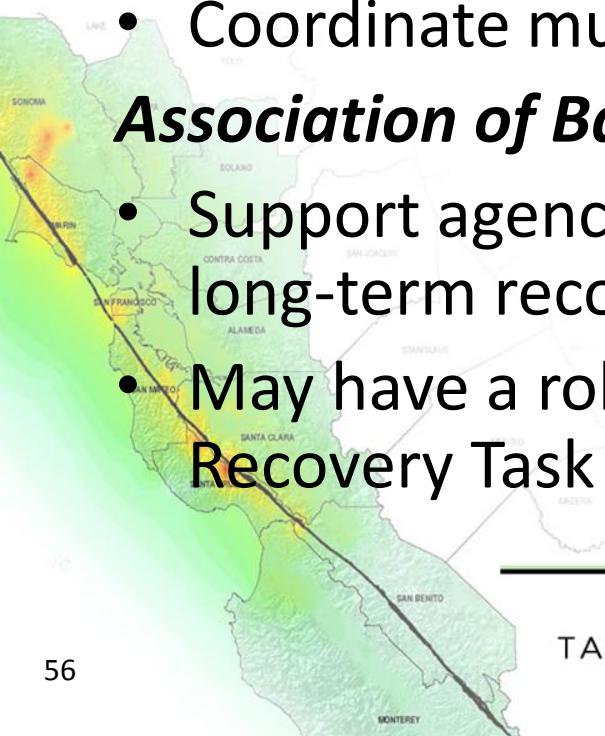
## Regional Organizations

### *Cal OES Coastal Region*

- Primary point of contact for Operational Areas in the region
- Coordinate the regional response
- Coordinate mutual aid requests for emergency services

### *Association of Bay Area Governments (ABAG)*

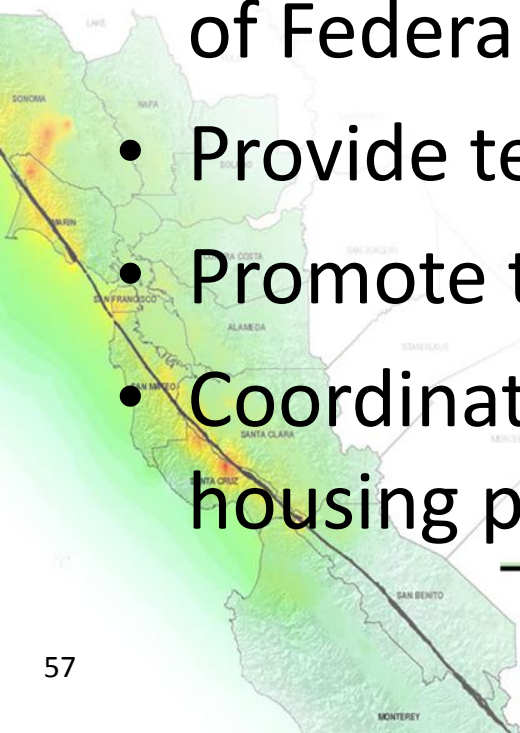
- Support agency for information dissemination and for long-term recovery planning
- May have a role on the SCHATF and the Regional Recovery Task Force



# Roles and Responsibilities

## State of California

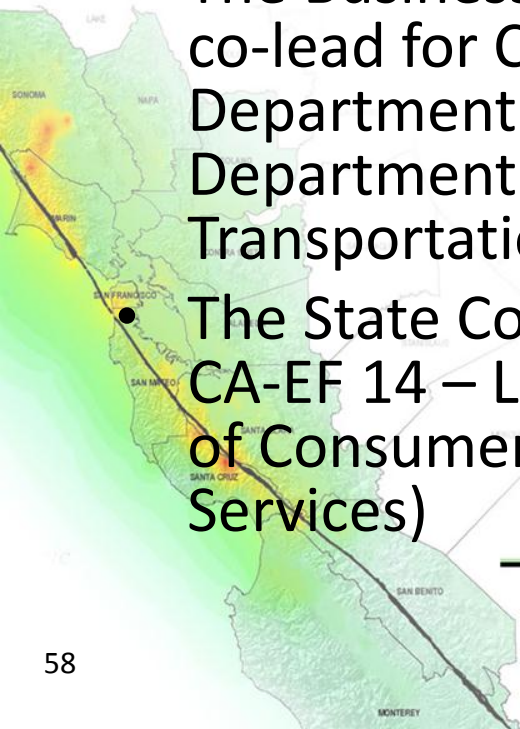
- Assist in identifying and expanding safe, affordable housing opportunities
- Request and coordinate the implementation of Federal assistance
- Provide technical assistance
- Promote the redevelopment of communities
- Coordinate the development of a post-disaster housing plan



# Roles and Responsibilities

## *Lead State Agencies*

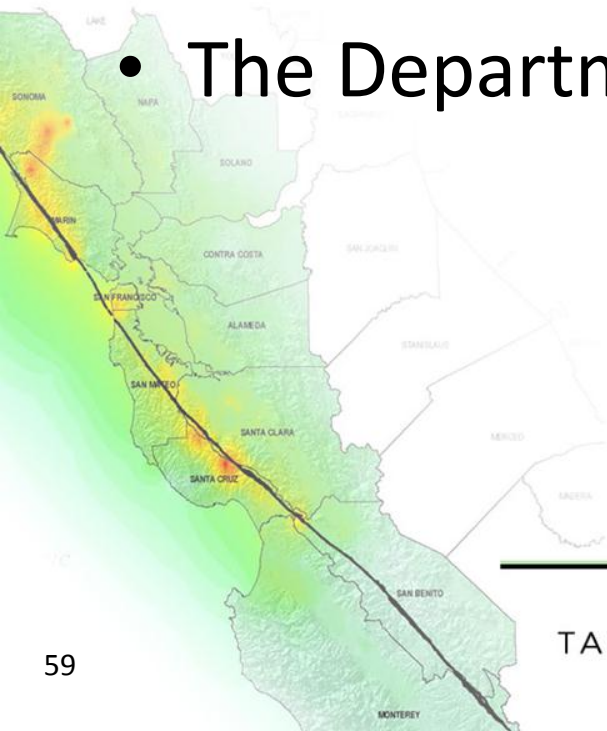
- Cal OES is the lead agency for coordinating overall State agency response
- The California Health and Human Services Agency (HHSA) – lead agency for CA-EF 6 – Mass Care and Shelter (including the Department of Social Services)
- The Business, Transportation, and Housing Agency (BTHA) – co-lead for CA-EF 14 – Long Term Recovery (including the Department of Housing and Community Development, the Department of Real Estate and the Department of Transportation)
- The State Consumer Services Agency (SCSA) – co-lead for CA-EF 14 – Long Term Recovery (including the Department of Consumer Affairs, and the Department of General Services)



# Roles and Responsibilities

## *Additional State Agencies*

- The State Office of the Attorney General
- The California Department of Insurance
- CaliforniaVolunteers
- The Department of Parks and Recreation

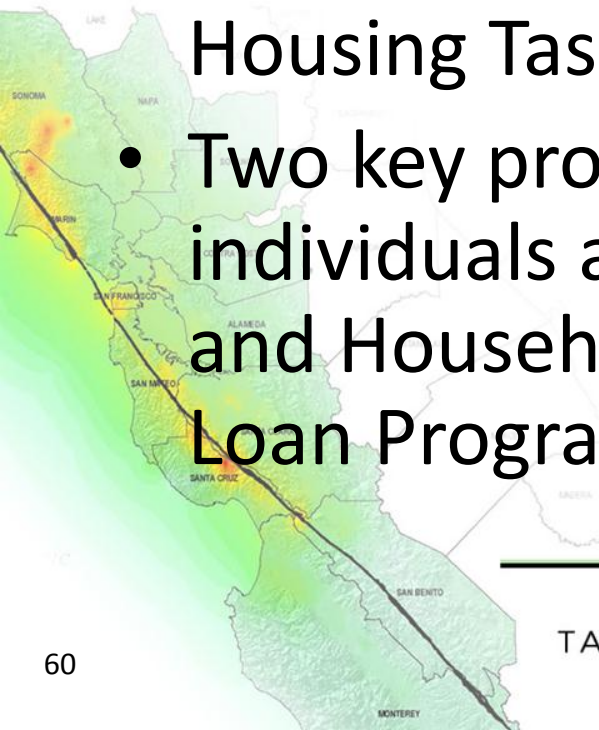




# Roles and Responsibilities

## Federal Government

- Interim housing operations are coordinated mainly by the Federal Government. Federal assistance is primarily coordinated through ESF #6, and through the National Disaster Housing Task Force.
- Two key programs provide assistance to individuals and households: the Individuals and Households Program and the Disaster Loan Program.

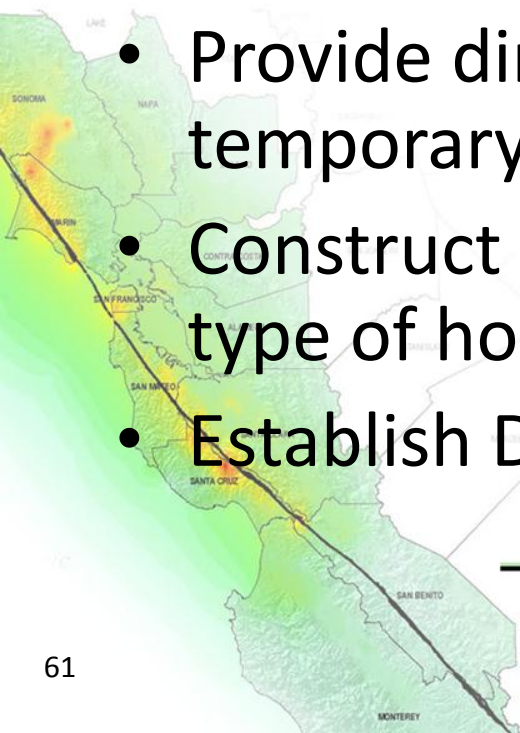


# Roles and Responsibilities

## *FEMA*

Under ESF #6, FEMA provides leadership to coordinate and integrate Federal efforts:

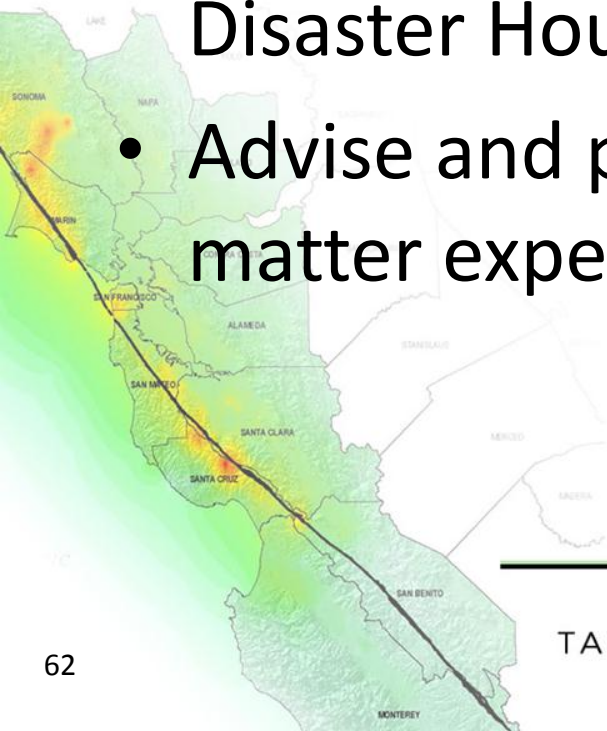
- Administer the Individuals and Household Program (IHP)
- Provide direct assistance in the form of temporary housing
- Construct permanent housing when no other type of housing assistance is possible
- Establish DRCs or participate in LACs



# Roles and Responsibilities

## *National Disaster Housing Task Force*

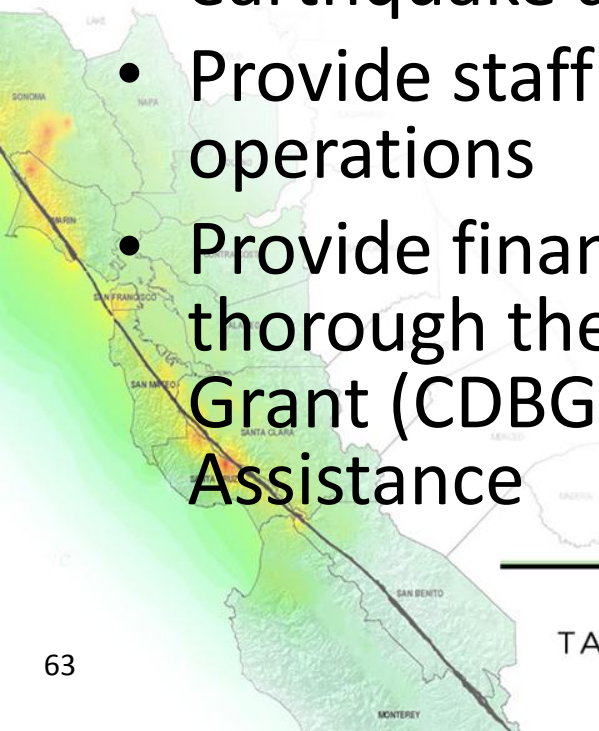
- Lead disaster housing contingency planning and preparedness efforts
- Oversee implementation of the National Disaster Housing Strategy
- Advise and provide technical and subject-matter expertise to the JFO and the SCHTF



# Roles and Responsibilities

## *HUD*

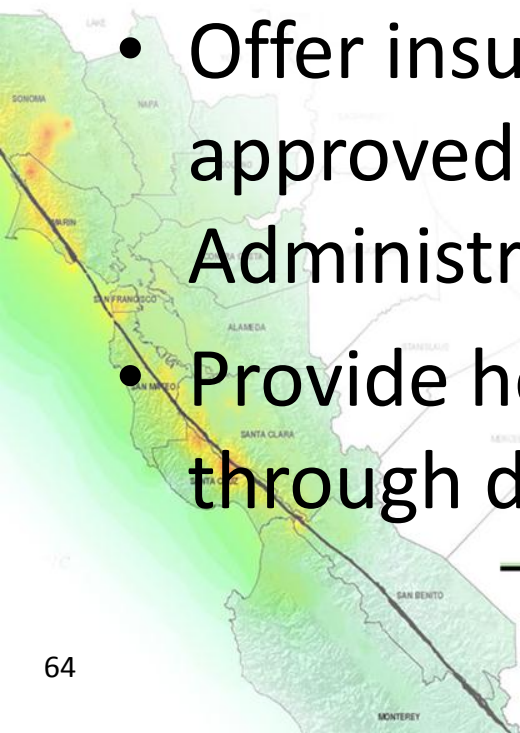
- Provide access to and information on habitable housing units owned or possessed by HUD
- Ensure that disaster victims who were receiving Section 8 rental assistance vouchers before the earthquake are reintegrated into the program
- Provide staff to assist mass care and housing operations
- Provide financial support to communities thorough the Community Development Block Grant (CDBG) Program for Disaster Recovery Assistance



# Roles and Responsibilities

## *HUD (cont'd)*

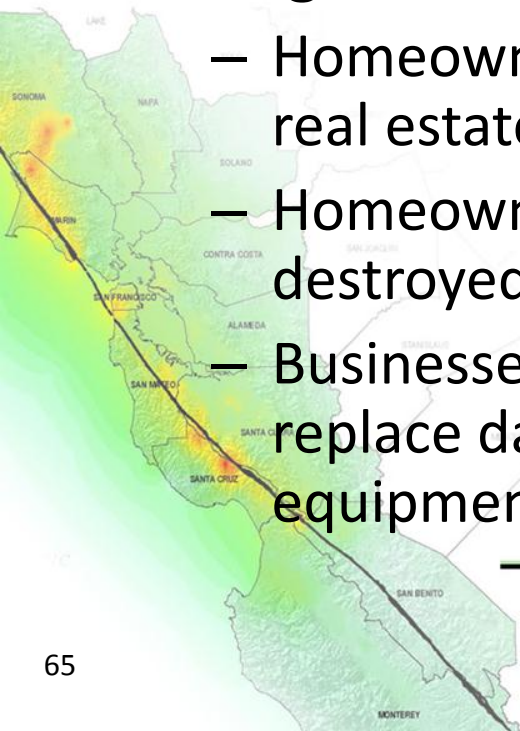
- Maintain the National Housing Locator
- Implement the Federal Government's Disaster Housing Assistance Program
- Offer insured mortgages through lenders approved by the Federal Housing Administration (FHA) to disaster victims
- Provide homeownership opportunities through discounted home sales programs



# Roles and Responsibilities

## *U.S. Small Business Administration*

- U.S. Small Business Administration may provide low-interest loans to eligible homeowners, renters, businesses, and private nonprofit organizations following a disaster, through the Disaster Loan Program, to:
  - Homeowners to repair or replace damaged or destroyed real estate
  - Homeowners and renters to repair or replace damaged or destroyed personal property
  - Businesses and private nonprofit organizations to repair or replace damaged or destroyed real estate, machinery and equipment, inventory and other business assets

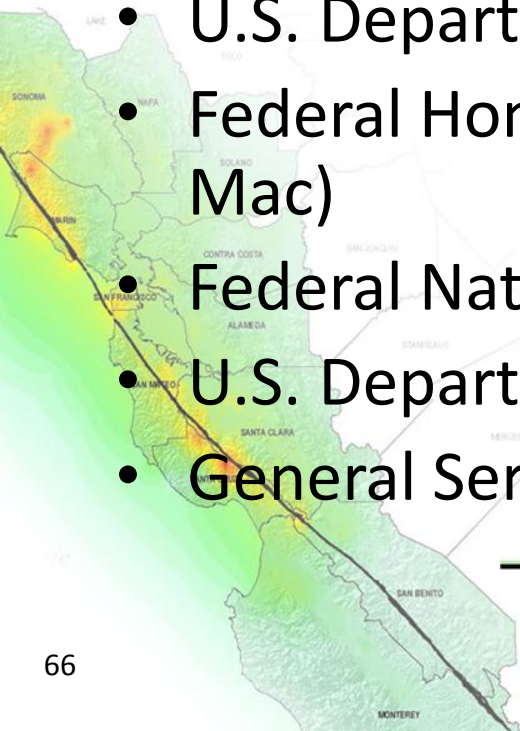




# Roles and Responsibilities

## *Other Federal Agencies*

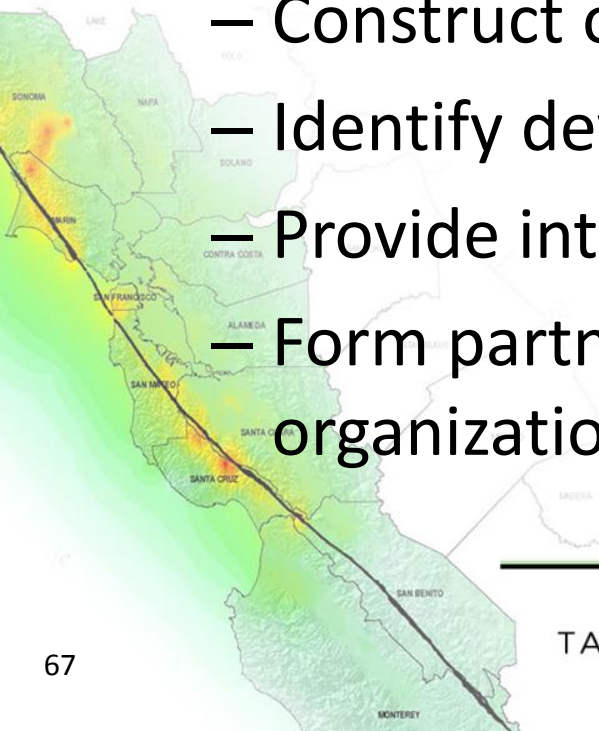
- Additional Federal agencies with a role in interim housing include:
- U.S. Department of Agriculture
- U.S. Department of Defense
- U.S. Department of Veterans Affairs
- Federal Home Loan Mortgage Corporation (Freddie Mac)
- Federal National Mortgage Association (Fannie Mae)
- U.S. Department of Health and Human Services
- General Services Administration



# Roles and Responsibilities

## Private Sector Entities

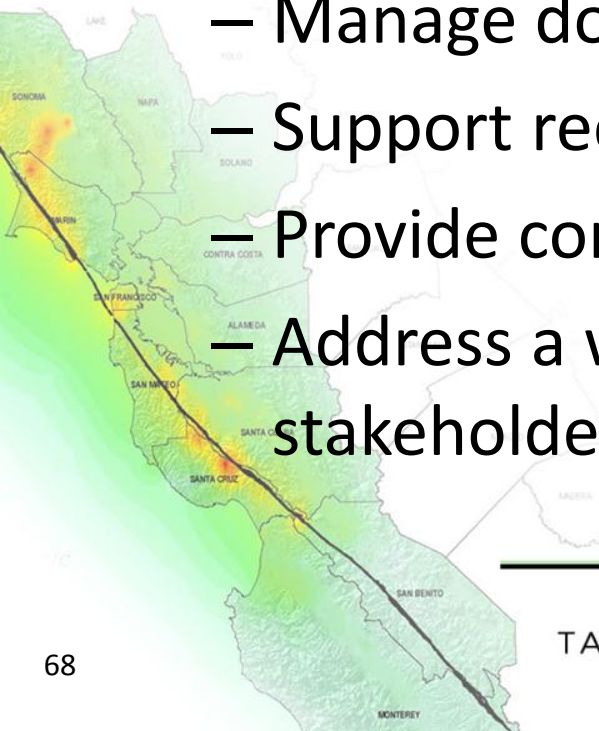
- Private-sector entities are important in providing interim housing and facilitating long-term recovery. Key roles include to:
  - Construct or repair housing
  - Identify development opportunities
  - Provide interim housing directly
  - Form partnerships with government and nonprofit organizations



# Roles and Responsibilities

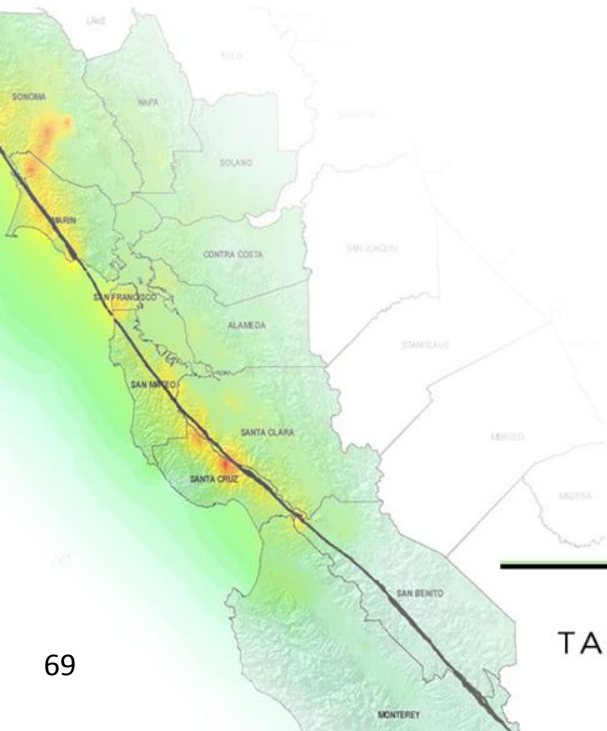
## Nongovernmental Organizations

- Nongovernmental organizations (NGOs) have roles in supporting or providing interim housing. These include to:
  - Manage donations
  - Support reconstruction efforts
  - Provide community support
  - Address a wide range of other needs for various stakeholders



# Communication and Coordination

- REOC
- State Coordinated Housing Task Force (SCHTF)
- CDSS Department Operations Center



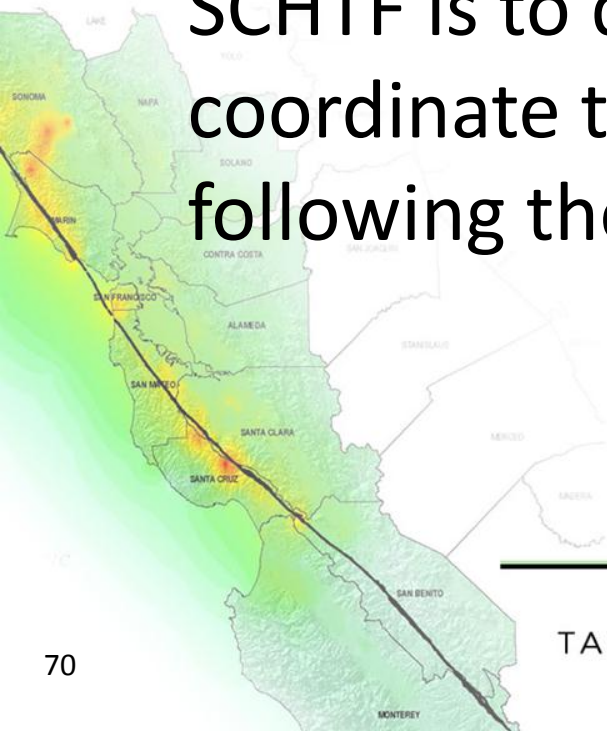
TABLETOP EXERCISE



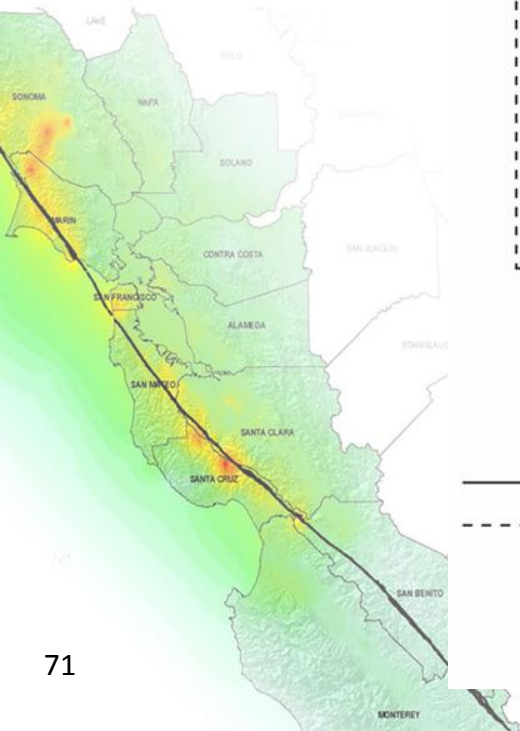
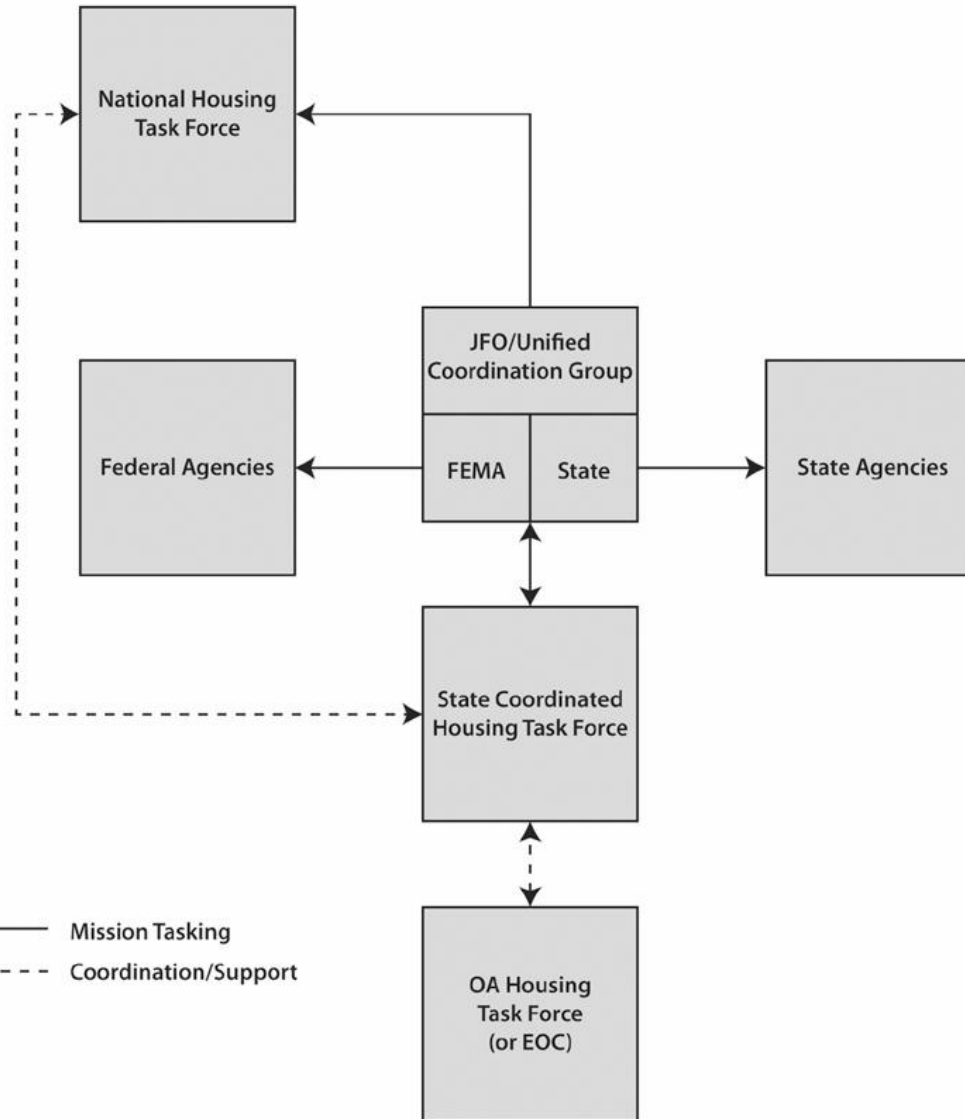
# Communication and Coordination

## SCHTF

- The Housing Task Force will be a unified effort of local, state, and federal concerns and resources. The primary responsibility of the SCHTF is to develop a housing plan and coordinate the provision of temporary housing following the disaster.



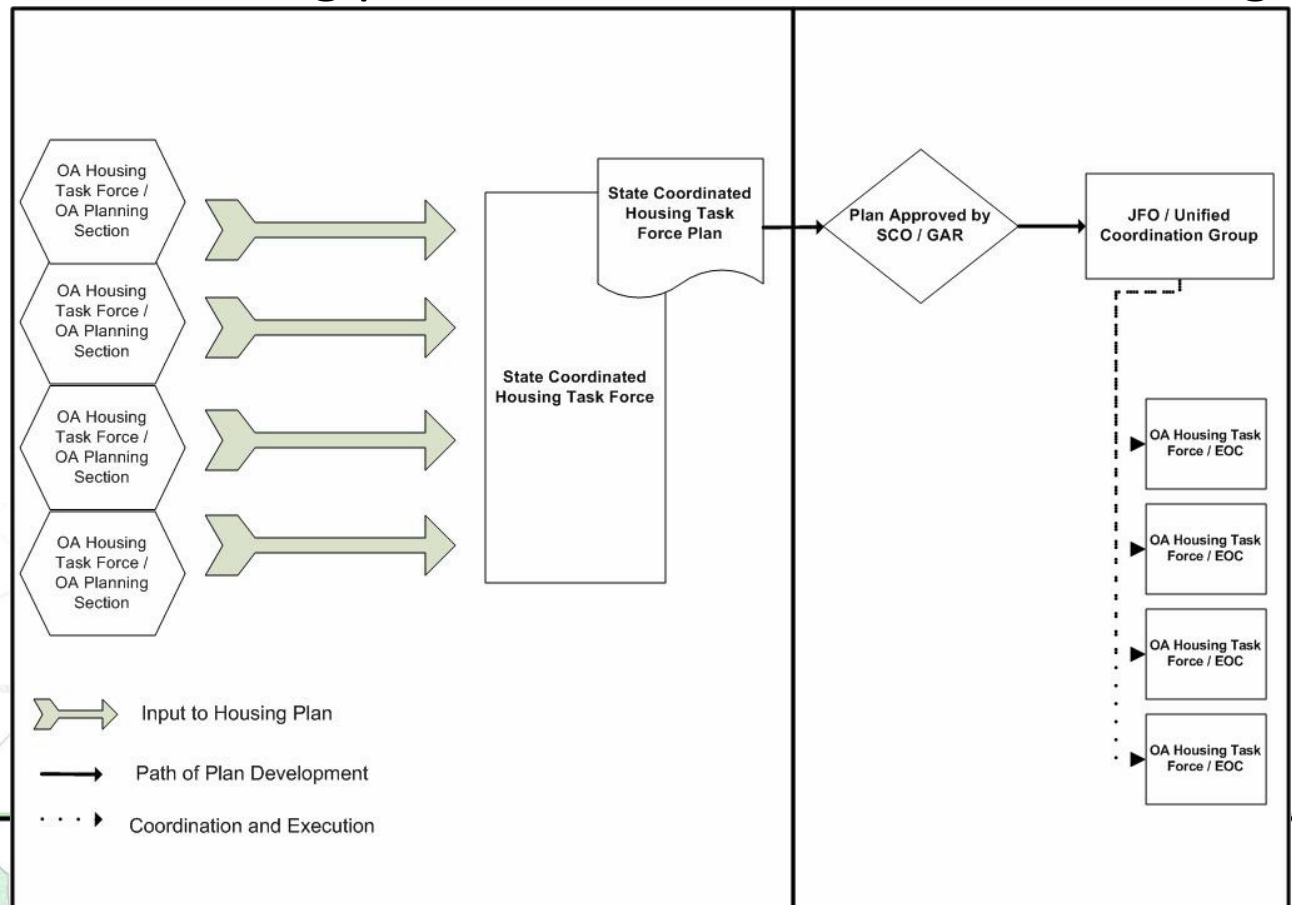
# Housing Task Force Coordination





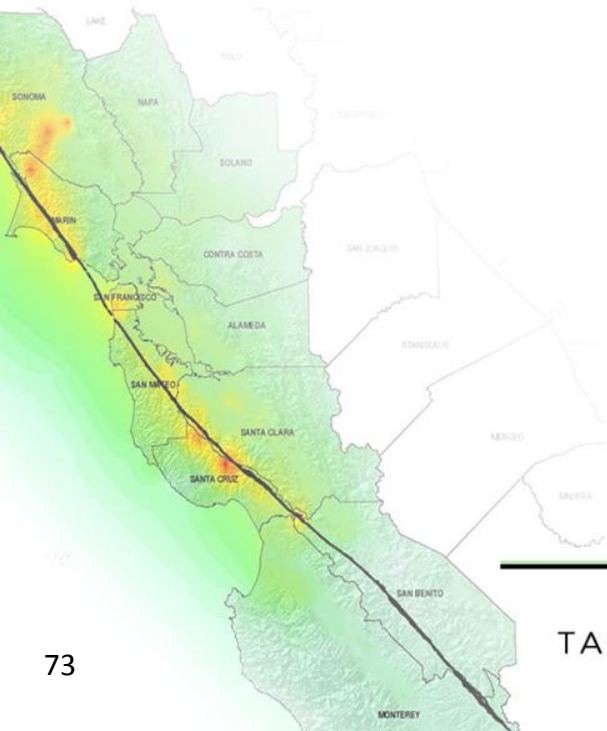
# Information Management

- For interim housing, critical information on housing demand and resources is captured and consolidated first in the Operational Area housing plans and then in the State housing plan.



# Operational Timeframes

- E+72 hours to E+14 days
- E+14 days to E+60 days
- E+60 days to E+1 year

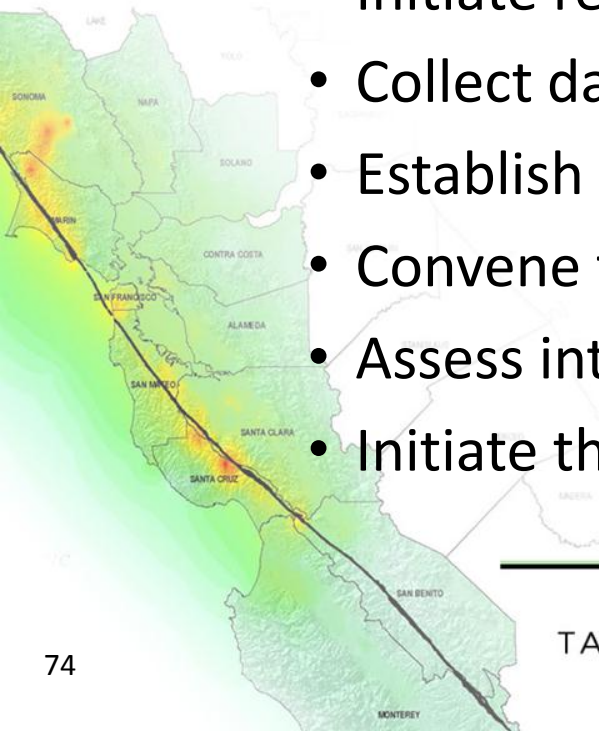


TABLETOP EXERCISE



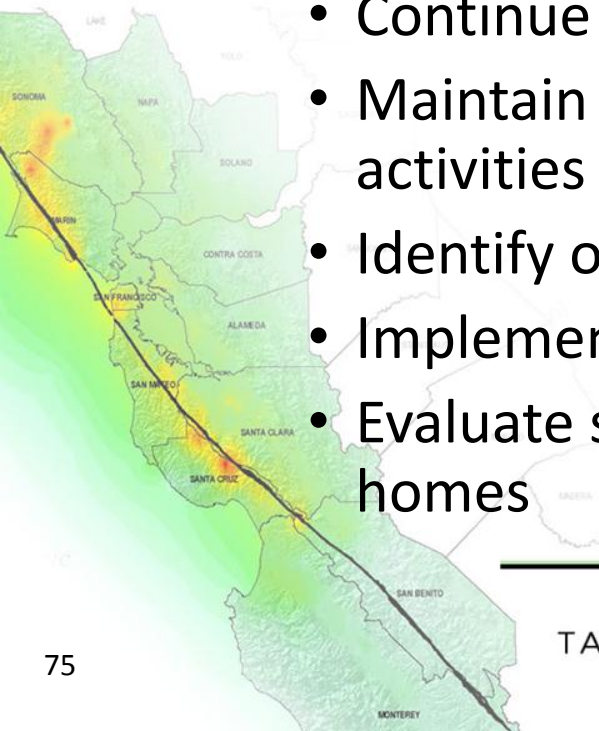
# Time-based Objectives

- E+72 hours to E+14 days
  - Operational Priority
    - To begin to develop an interim housing plan
  - Objectives
    - Initiate registration
    - Collect data from damage assessments
    - Establish LACs/DRCs
    - Convene the SCHATF
    - Assess interim housing requirements
    - Initiate the development of an interim housing strategy



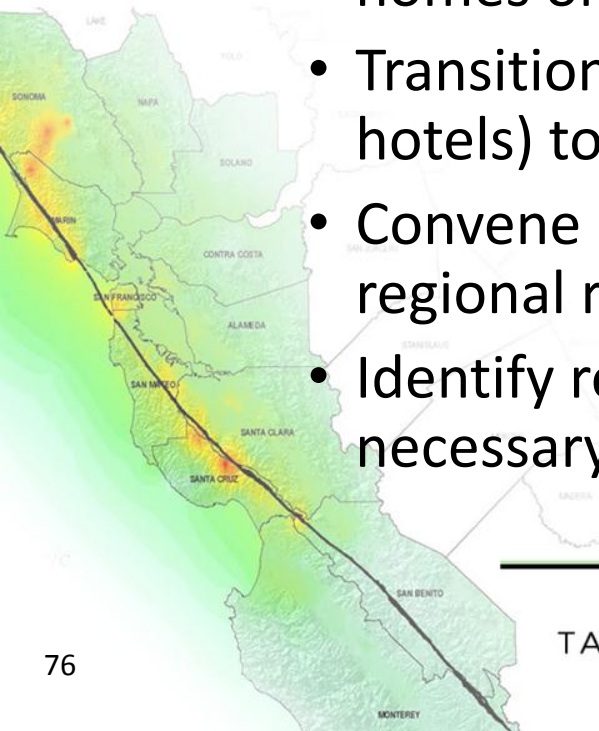
# Time-based Objectives

- E+14 days to E+ 60 days
  - Operational Priority
    - To initiate the transition from shelters to interim housing
  - Objectives
    - Continue to integrate private sector resources
    - Maintain ongoing situational awareness of shelter activities
    - Identify opportunities to close shelters
    - Implement interim housing programs and strategies
    - Evaluate safety assessments and building inspections of homes



# Time-based Objectives

- E+14 days to E+ 60 days (cont'd)
  - Objectives: (cont'd)
    - Facilitate restoration of moderately damaged dwellings
    - Educate and support occupants of nontraditional shelters to encourage them to return to their habitable homes or move to interim housing
    - Transition families from short-term solutions (e.g., hotels) to longer-term solutions
    - Convene long-term recovery task force to coordinate regional recovery
    - Identify restricted use housing for populations necessary to remain in the region



# Time-based Objectives

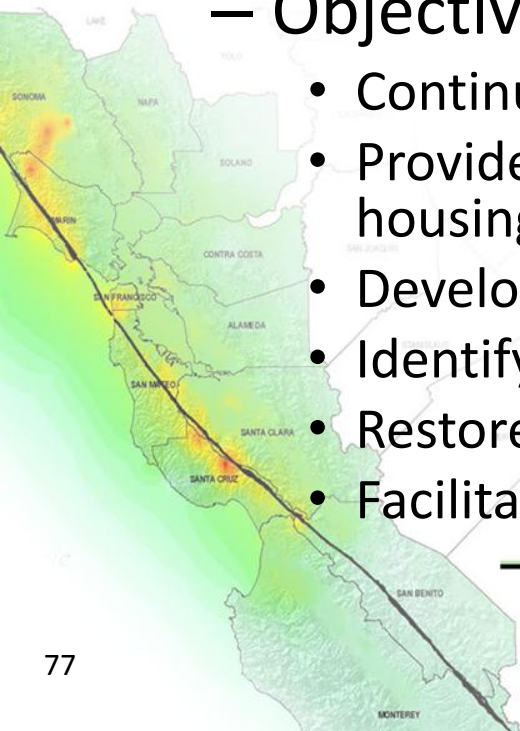
- E+60 days to E+1 Year

- Operational Priorities

- Complete the transition from shelters to interim housing
- Develop and implement a long-term housing strategy
- Transition families to permanent housing

- Objectives

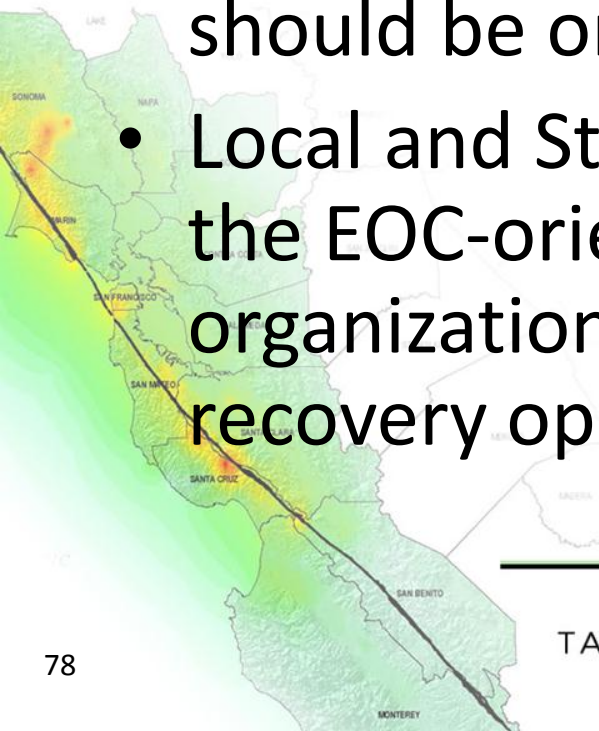
- Continue to implement interim housing programs
- Provide wraparound services to support those in interim housing
- Develop and implement long-term recovery plans
- Identify and access sources of funding for long-term recovery
- Restore damaged housing and develop replacement housing
- Facilitate the return of displaced families to local communities



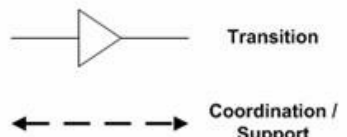
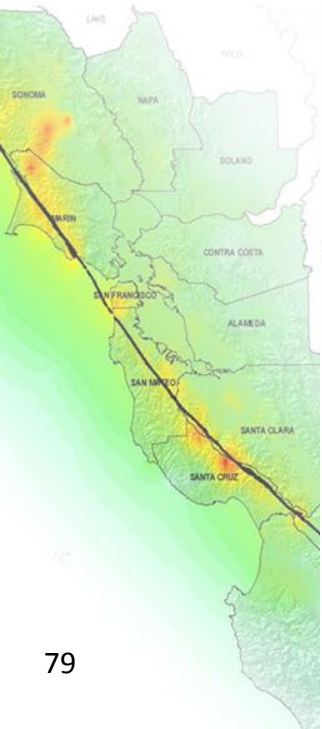
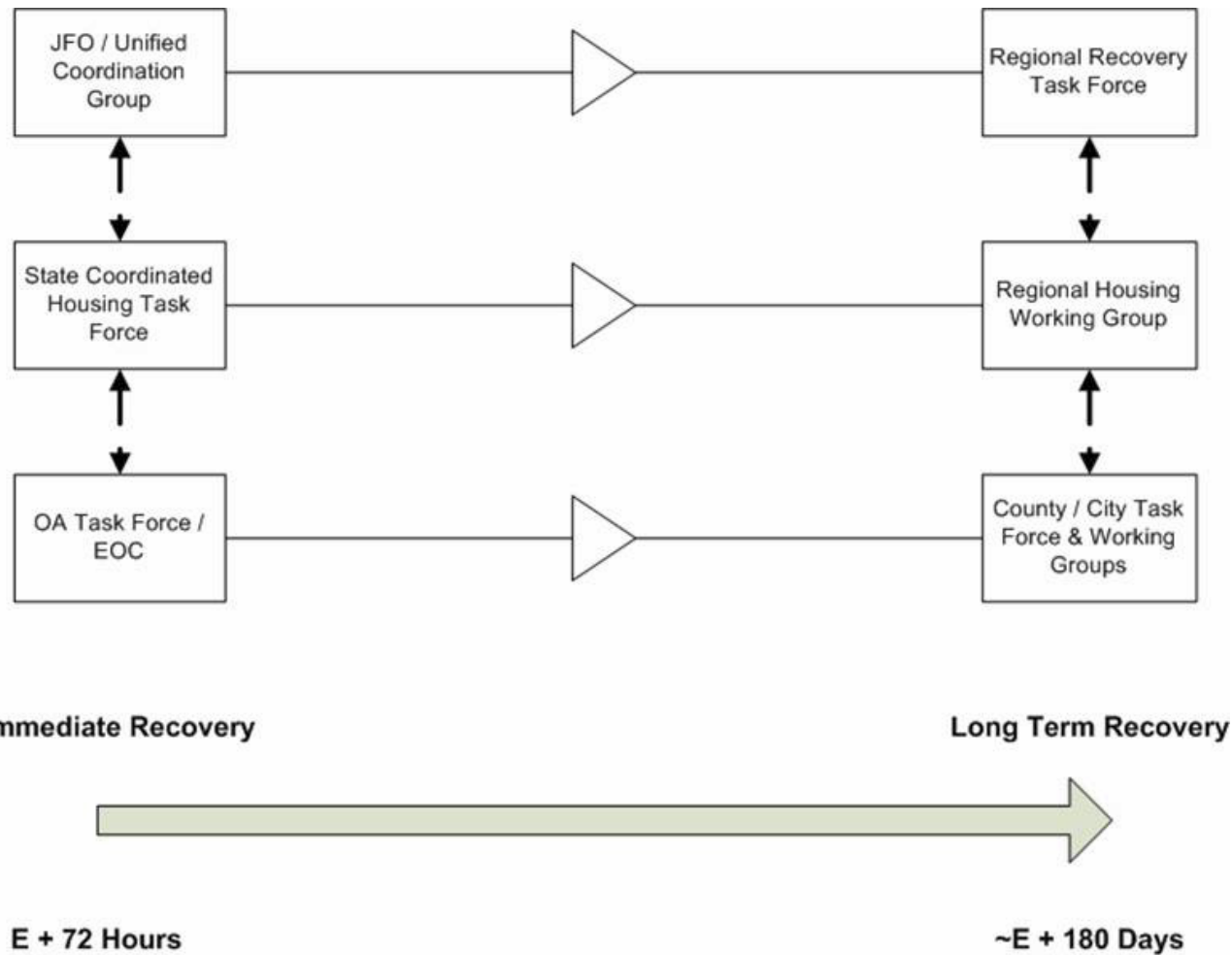


# Long-Term Recovery

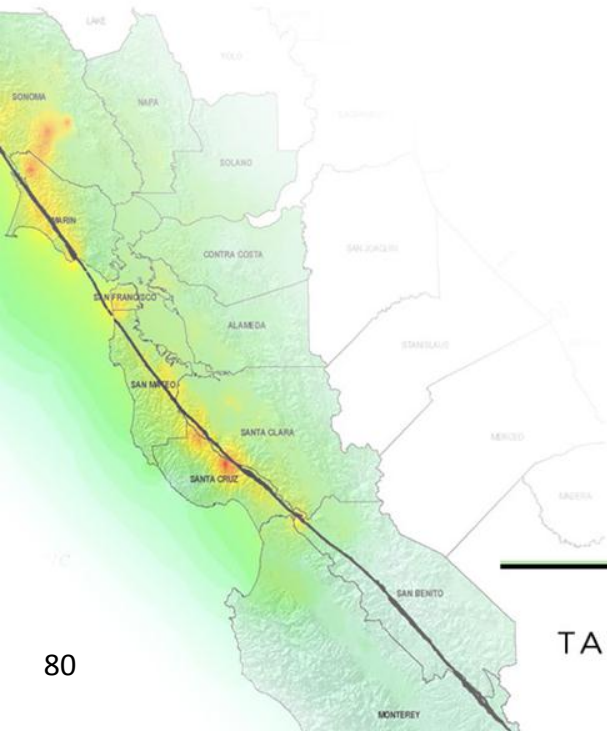
- The focus shifts from provision of shelter and temporary housing to restoration of damaged housing, development of new housing, incorporation of mitigation measures into housing, and planning how communities should be organized.
- Local and State governments transition out of the EOC-oriented operations and to organizations that are designed to facilitate recovery operations.



# Transition to Long-Term Recovery



# Module 2: Tabletop Discussion



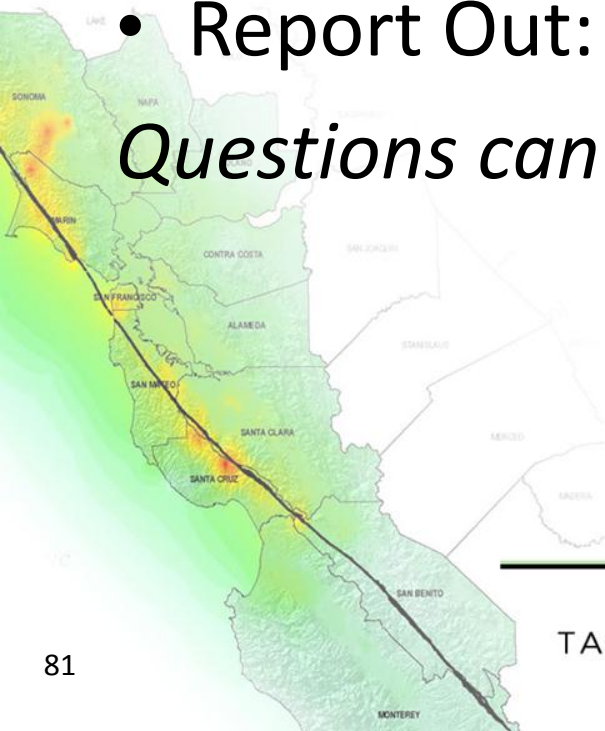
TABLETOP EXERCISE



# Objective 1:

- Review the roles and responsibilities of critical agencies and organizations identified in the *Regional Interim Housing Plan*
- Discussion Time: Approximately 45 Minutes
- Report Out: 15 Minutes

*Questions can be found in your SitMan*

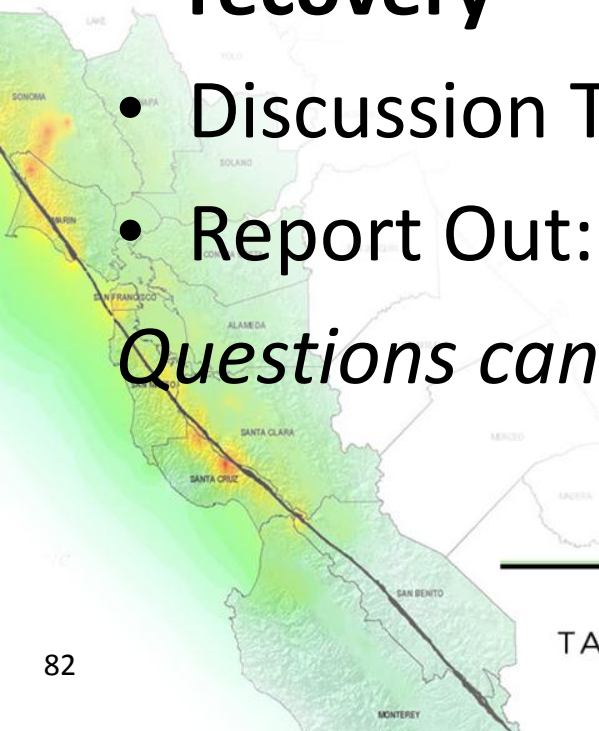


# Objective 2:

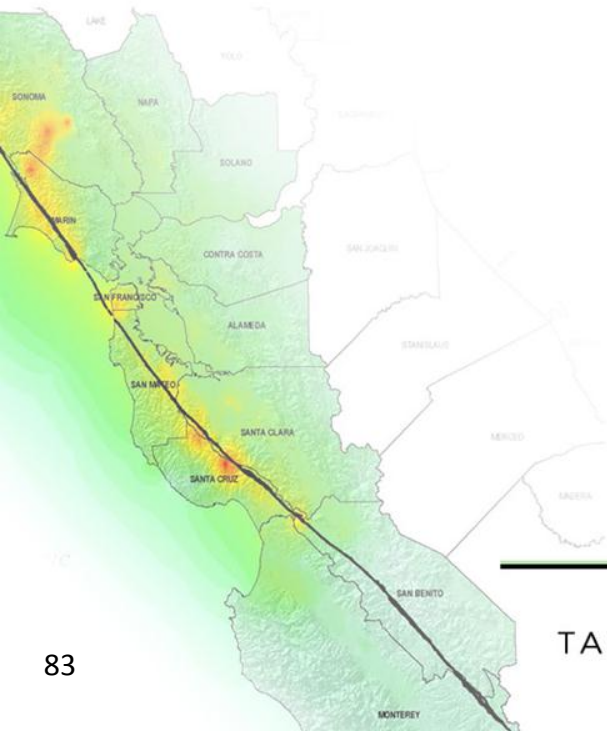
- Describe how interim housing activities are coordinated from initial activation to one year, as response shifts from meeting immediate needs to supporting long-term recovery

- Discussion Time: Approximately 45 Minutes
- Report Out: 15 Minutes

*Questions can be found in your SitMan*



# BREAK – 15 Minutes

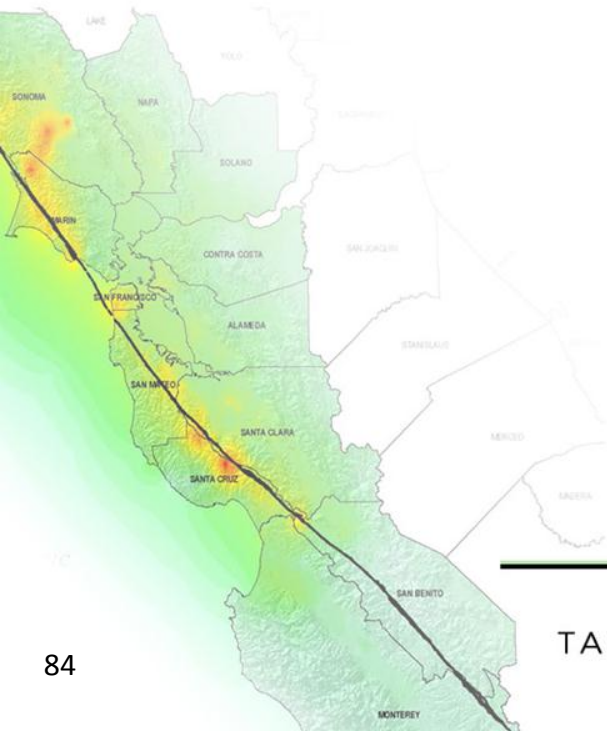


TABLETOP EXERCISE





# Completion of Module 2: Tabletop Discussion



TABLETOP EXERCISE

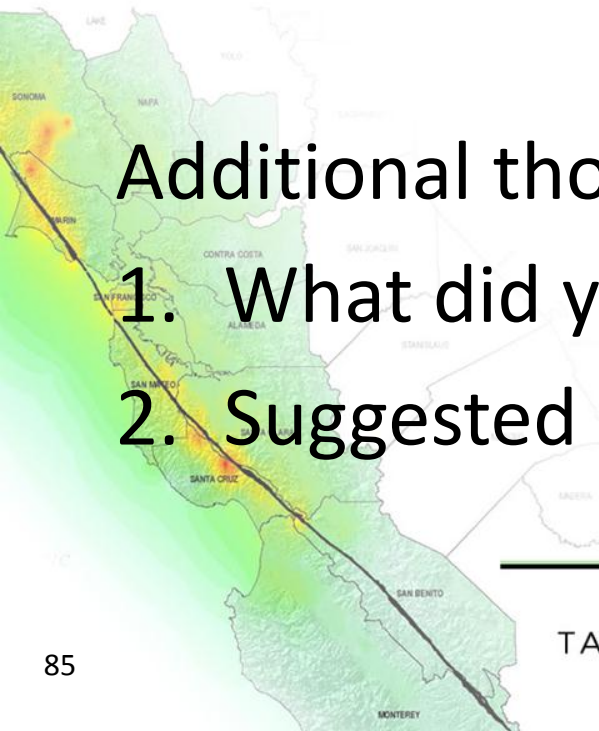


# HOT WASH

1. What are the strengths identified today?
2. What are the key areas of improvement identified today?
3. What are the recommendations?

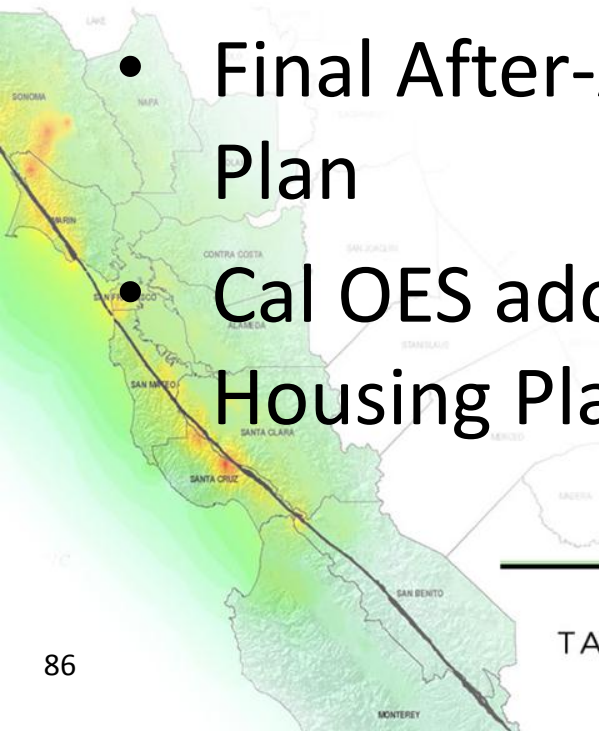
## Additional thoughts – Exercise Design

1. What did you like about the exercise?
2. Suggested changes?

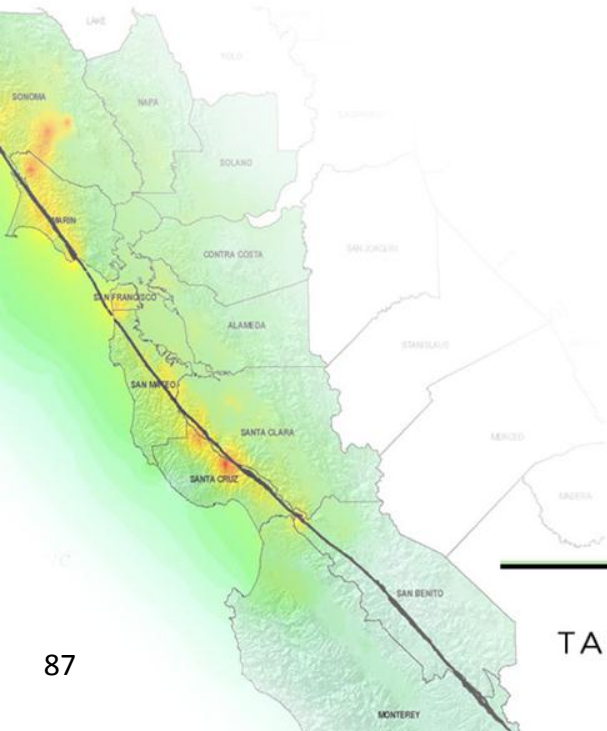


# Next Steps

- Complete Participant Feedback Forms
- Analyze today's information
- Draft After-Action Report for review
- After-Action Conference Call
- Final After-Action Report and Improvement Plan
- Cal OES adoption of the Regional Interim Housing Plan



# Closing Comments

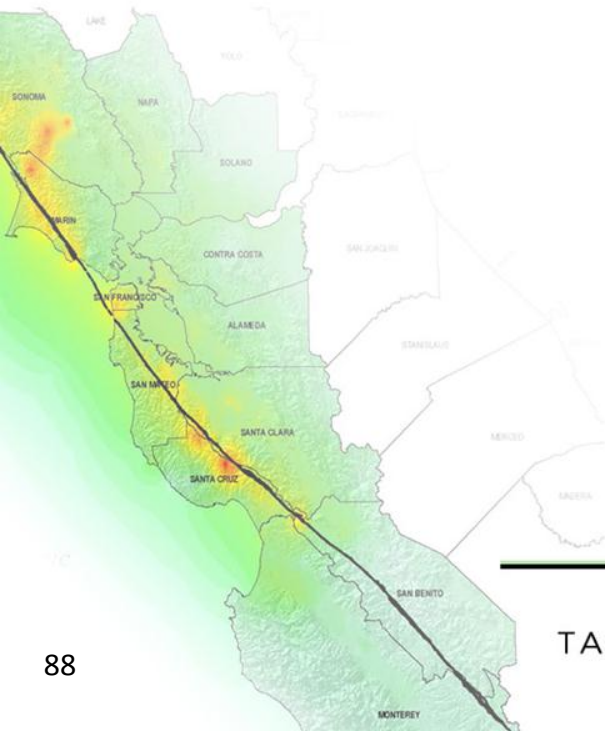


TABLETOP EXERCISE



# THANK YOU!

**Please leave your completed  
Participant Feedback Forms on the  
tables.**



TABLETOP EXERCISE

